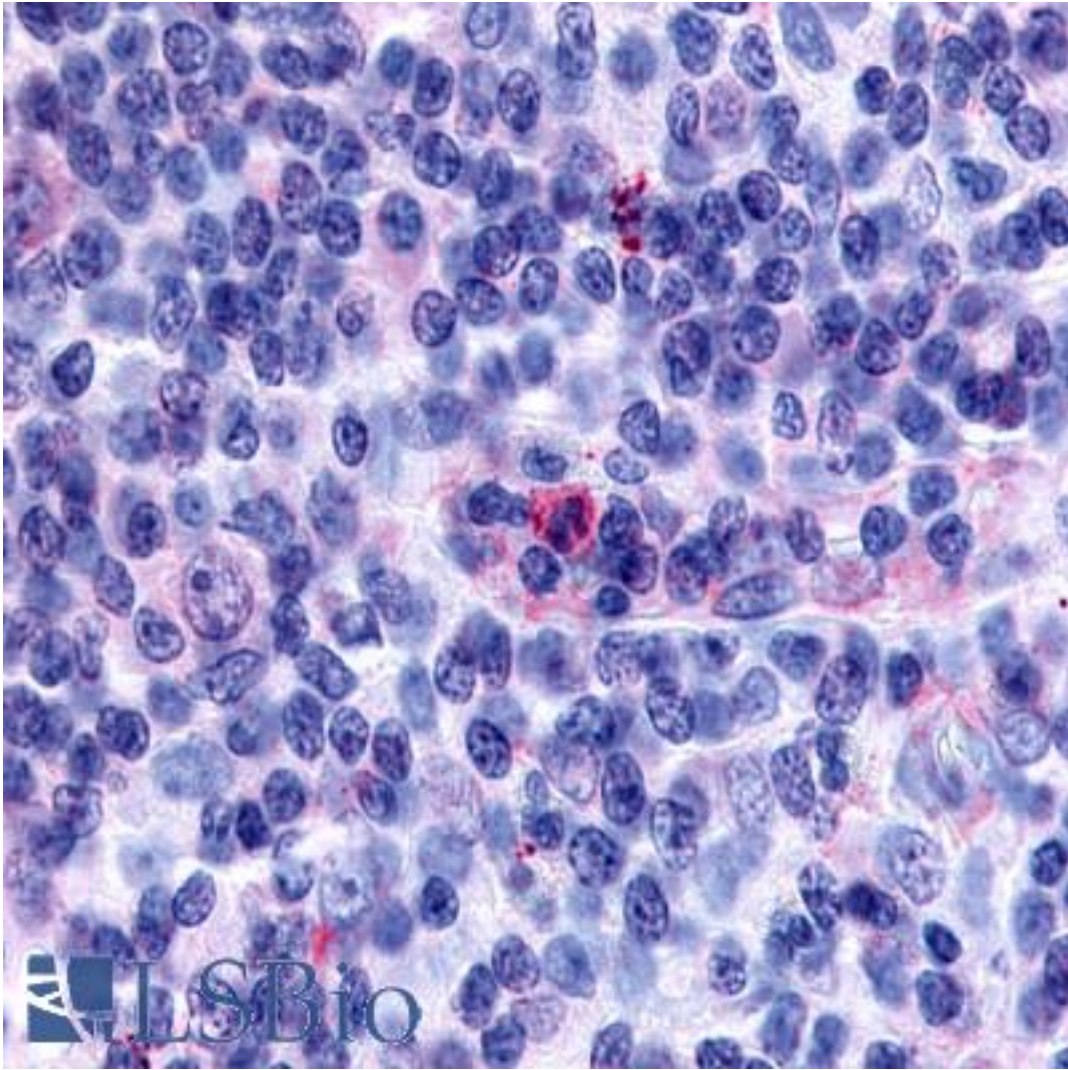


GPR65 / TDAG8 Rabbit anti-Human Polyclonal (Cytoplasmic Domain) Antibody - LS-A1627 - LSBio	
CatalogID:	LS-A1627
Target:	G protein-coupled receptor 65 (GPR65)
Synonyms:	GPR65 Antibody, G-protein coupled receptor 65 Antibody, Gpcr25 Antibody, HTDAG8 Antibody, TDAG8 Antibody, T-cell death-associated gene 8 Antibody, Psychosine receptor Antibody, G protein-coupled receptor 65 Antibody
Family / Subfamily:	GPCR / Lysophospholipid/Lysosphingolipid
Host	GPR65 antibody was produced in Rabbit
Clonality:	Polyclonal
Immunogen Species:	GPR65 / TDAG8 antibody was raised against Human
Antigen Type:	Synthetic peptide
Immunogen:	GPR65 / TDAG8 antibody was raised against synthetic 19 amino acid peptide from 3rd cytoplasmic domain of human GPR65. Percent identity with other species by BLAST analysis: Human, Gorilla, Monkey (100%); Gibbon, Marmoset (95%); Rabbit (84%).
Specificity:	Human GPR65. BLAST analysis of the peptide immunogen showed no homology with other human proteins.
Epitope:	Cytoplasmic Domain
Reactivity:	Human, Gorilla
Predicted Reactivity:	Gibbon, Monkey
Purification:	Immunoaffinity purified
Presentation:	PBS, 0.1% sodium azide.
Recommended Storage:	Long term: -70°C; Short term: +4°C
Uses:	IHC - Paraffin (9 - 23 µg/ml) (Optimal dilution to be determined by the researcher)
Size:	50 µg
Concentration:	1 mg/ml

Immunohistochemistry Image:



Anti-GPR65 antibody LS-A1627 IHC of human lymph node, Hodgkin's disease.
Immunohistochemistry of formalin-fixed, paraffin-embedded tissue after heat-induced antigen retrieval.

Requested From:

Japan

Laboratory Reagent For In Vitro Research Use Only

Not for resale without prior written consent from LifeSpan BioSciences, Inc.

Created on 9/23/2014

© 2014 LifeSpan BioSciences