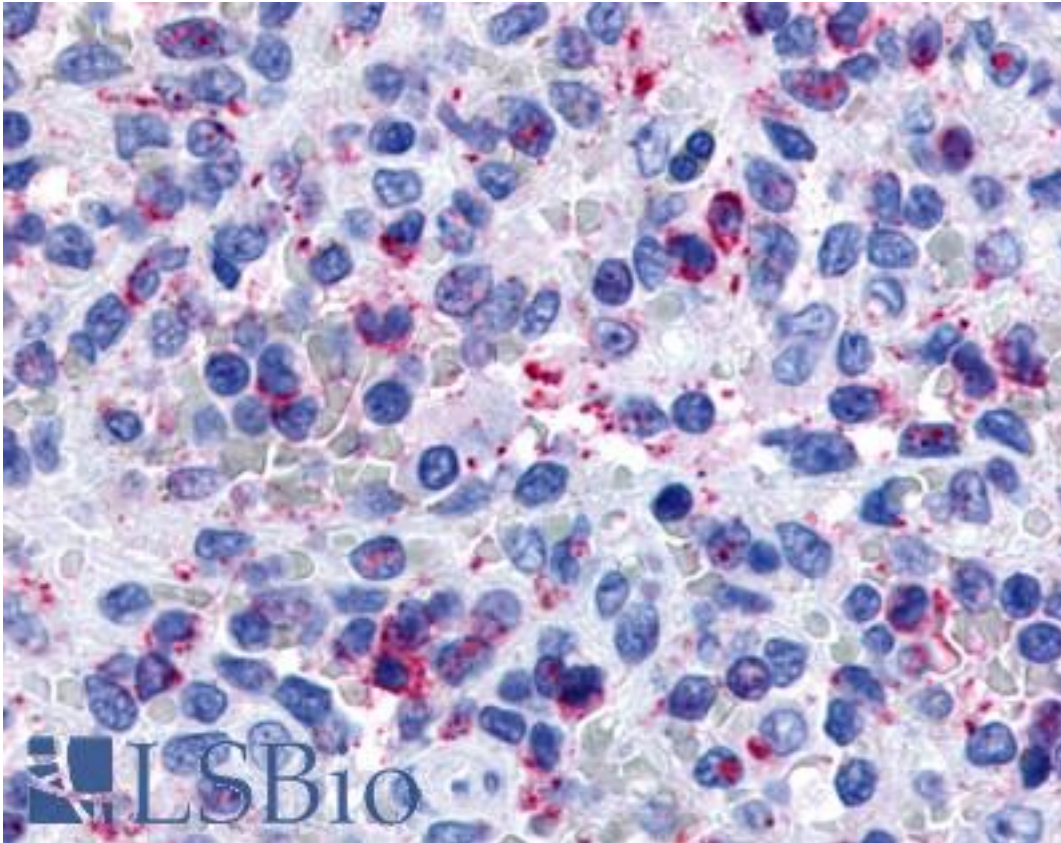


P2Y13 / P2RY13 Rabbit anti-Human Polyclonal (Extracellular Domain) Antibody - LS-A1620 - LSBio	
CatalogID:	LS-A1620
Target:	purinergic receptor P2Y, G-protein coupled, 13 (P2RY13)
Synonyms:	P2RY13 Antibody, FKSG77 Antibody, G-protein coupled receptor 94 Antibody, GPR94 Antibody, G-protein coupled receptor 86 Antibody, GPCR1 Antibody, GPR86 Antibody, p2RY13 Antibody, SP174 Antibody, G protein-coupled receptor 86 Antibody, p2Y purinoceptor 13 Antibody, p2Y13 Antibody
Family / Subfamily:	GPCR / Purinergic
Host	P2RY13 antibody was produced in Rabbit
Clonality:	Polyclonal
Immunogen Species:	P2Y13 / P2RY13 antibody was raised against Human
Antigen Type:	Synthetic peptide
Immunogen:	P2Y13 / P2RY13 antibody was raised against synthetic 16 amino acid peptide from 2nd extracellular domain of human P2RY13 / P2Y13. Percent identity with other species by BLAST analysis: Human, Gorilla, Gibbon, Monkey, Marmoset, Bovine, Rabbit, Pig (100%); Mouse, Dog, Hamster, Elephant, Panda, Opossum (94%); Horse, Chicken (88%); Rat, Lizard (81%).
Specificity:	Human P2RY13 / P2Y13. BLAST analysis of the peptide immunogen showed no homology with other human proteins.
Epitope:	Extracellular Domain
Reactivity:	Human, Gorilla, Gibbon, Monkey, Bovine, Pig, Rabbit
Predicted Reactivity:	Mouse, Dog, Hamster
Purification:	Immunoaffinity purified
Presentation:	PBS, 0.1% sodium azide.
Recommended Storage:	Long term: -70°C; Short term: +4°C
Uses:	IHC - Paraffin (8 - 11 µg/ml) (Optimal dilution to be determined by the researcher)
Size:	50 µg
Concentration:	1 mg/ml

Immunohistochemistry Image:



Anti-P2RY13 / P2Y13 antibody LS-A1620 IHC of human spleen. Immunohistochemistry of formalin-fixed, paraffin-embedded tissue after heat-induced antigen retrieval.

Requested From:

Japan

Laboratory Reagent For In Vitro Research Use Only

Not for resale without prior written consent from LifeSpan BioSciences, Inc.

Created on 9/23/2014

© 2014 LifeSpan BioSciences