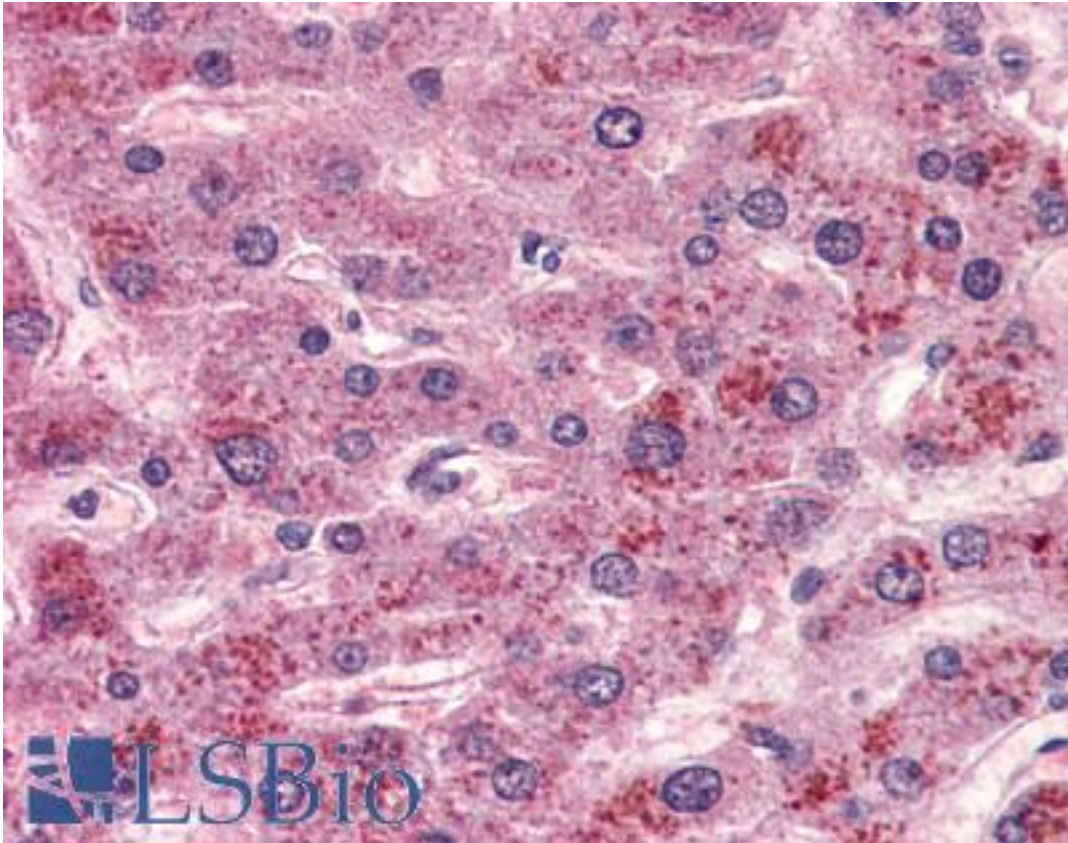


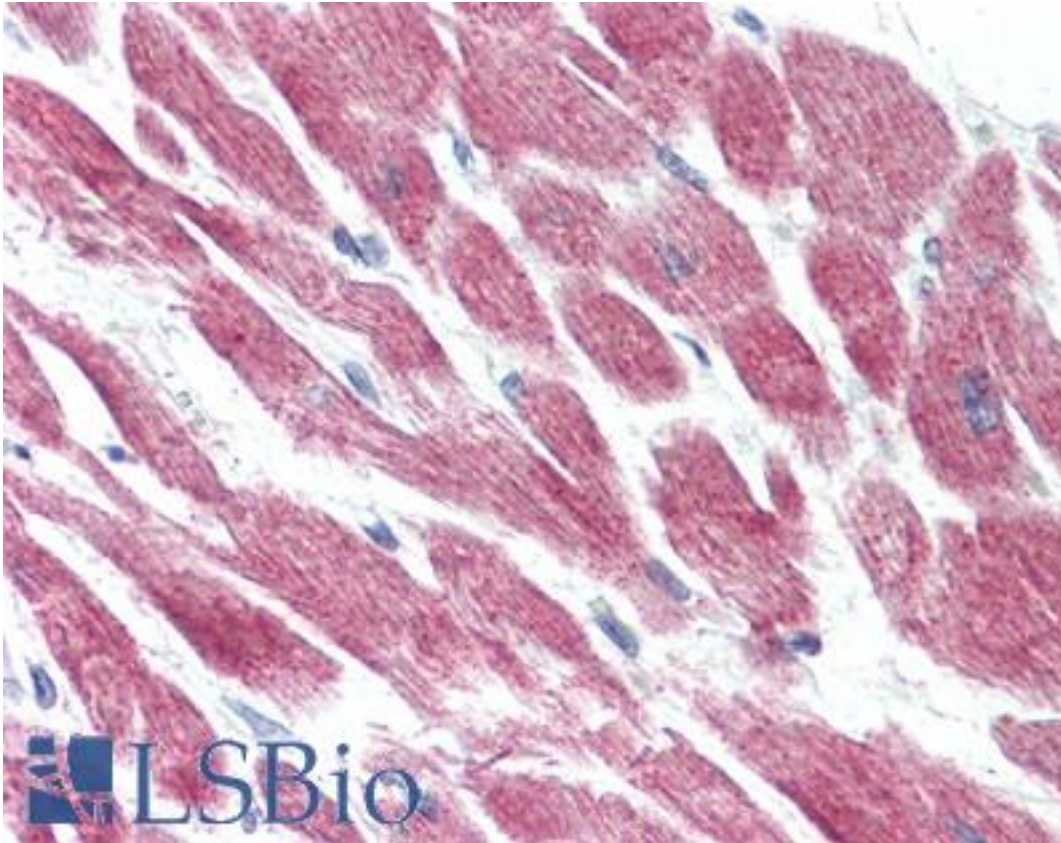
BOB / GPR15 Rabbit anti-Human Polyclonal (Extracellular Domain) Antibody - LS-A1615 - LSBio	
CatalogID:	LS-A1615
Target:	G protein-coupled receptor 15 (GPR15)
Synonyms:	GPR15 Antibody, Brother of Bonzo Antibody, G protein-coupled receptor 15 Antibody, G-protein coupled receptor 15 Antibody, BOB Antibody, Gpr-15 Antibody
Family / Subfamily:	GPCR / Orphan-A
Host	GPR15 antibody was produced in Rabbit
Clonality:	Polyclonal
Immunogen Species:	BOB / GPR15 antibody was raised against Human
Antigen Type:	Synthetic peptide
Immunogen:	BOB / GPR15 antibody was raised against synthetic 19 amino acid peptide from 2nd extracellular domain of human GPR15. Percent identity with other species by BLAST analysis: Human, Chimpanzee, Gorilla, Gibbon, Monkey, Panda (100%); Marmoset, Bovine, Elephant, Rabbit, Pig (95%); Horse (89%); Mouse, Bat (84%).
Specificity:	Human GPR15. BLAST analysis of the peptide immunogen showed no homology with other human proteins.
Epitope:	Extracellular Domain
Reactivity:	Human, Chimpanzee, Gorilla, Gibbon
Predicted Reactivity:	Monkey, Bovine, Pig, Rabbit
Purification:	Immunoaffinity purified
Presentation:	PBS, 0.1% sodium azide.
Recommended Storage:	Long term: -70°C; Short term: +4°C
Usage Summary:	Antigen retrieval requires Proteinase K treatment.
Uses:	IHC - Paraffin (10 µg/ml) (Optimal dilution to be determined by the researcher)
Size:	50 µg
Concentration:	1 mg/ml

Immunohistochemistry Image:



Anti-GPR15 antibody LS-A1615 IHC of human liver. Immunohistochemistry of formalin-fixed, paraffin-embedded tissue after heat-induced antigen retrieval.

Immunohistochemistry Image:



Anti-GPR15 antibody LS-A1615 IHC of human heart. Immunohistochemistry of formalin-fixed, paraffin-embedded tissue after heat-induced antigen retrieval.

Requested From:

Japan

Laboratory Reagent For In Vitro Research Use Only

Not for resale without prior written consent from LifeSpan BioSciences, Inc.

Created on 9/23/2014

© 2014 LifeSpan BioSciences