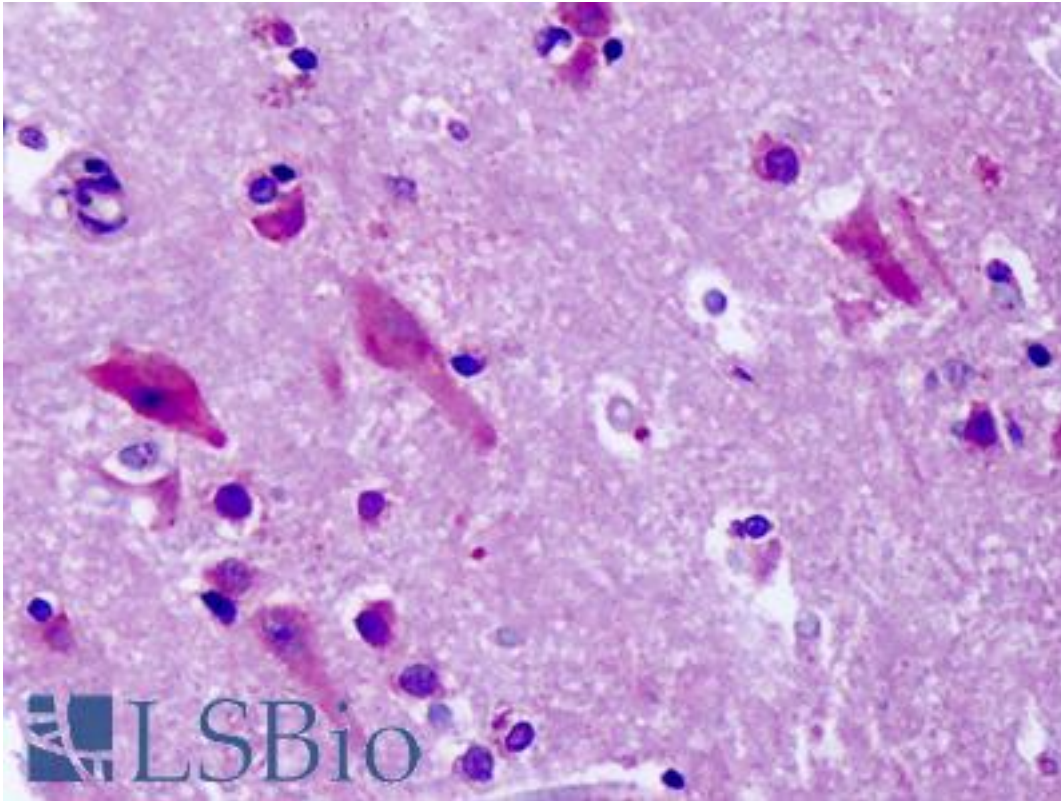


GPR83 Rabbit anti-Human Polyclonal (C-Terminus) Antibody - LS-A1606 - LSBio

CatalogID:	LS-A1606
Target:	G protein-coupled receptor 83 (GPR83)
Synonyms:	GPR83 Antibody, G protein-coupled receptor 83 Antibody, G-protein coupled receptor 72 Antibody, GPR72 Antibody, Jp05 Antibody, KIAA1540 Antibody, Hcepto9 Antibody, G protein-coupled receptor 72 Antibody, GIR Antibody
Family / Subfamily:	GPCR / Orphan-A
Host	GPR83 antibody was produced in Rabbit
Clonality:	Polyclonal
Immunogen Species:	GPR83 antibody was raised against Human
Antigen Type:	Synthetic peptide
Immunogen:	GPR83 antibody was raised against synthetic 16 amino acid peptide from C-terminus of human GPR83. Percent identity with other species by BLAST analysis: Human (93%); Chimpanzee, Gorilla, Orangutan, Monkey, Mouse (87%); Gibbon, Galago, Marmoset, Rat, Bat, Hamster, Rabbit, Horse (80%).
Specificity:	Human GPR83. BLAST analysis of the peptide immunogen showed no homology with other human proteins.
Epitope:	C-Terminus
Reactivity:	Human
Purification:	Immunoaffinity purified
Presentation:	PBS, 0.1% sodium azide.
Recommended Storage:	Long term: -70°C; Short term: +4°C
Uses:	IHC - Paraffin (14 - 28 µg/ml) (Optimal dilution to be determined by the researcher)
Size:	50 µg
Concentration:	1 mg/ml

Immunohistochemistry Image:



Anti-GPR83 antibody IHC of human brain, cortex, neurons. Immunohistochemistry of formalin-fixed, paraffin-embedded tissue after heat-induced antigen retrieval. Antibody LS-A1606 dilution 14-28 ug/ml.

Requested From:

Japan

Laboratory Reagent For In Vitro Research Use Only

Not for resale without prior written consent from LifeSpan BioSciences, Inc.

Created on 9/23/2014

© 2014 LifeSpan BioSciences