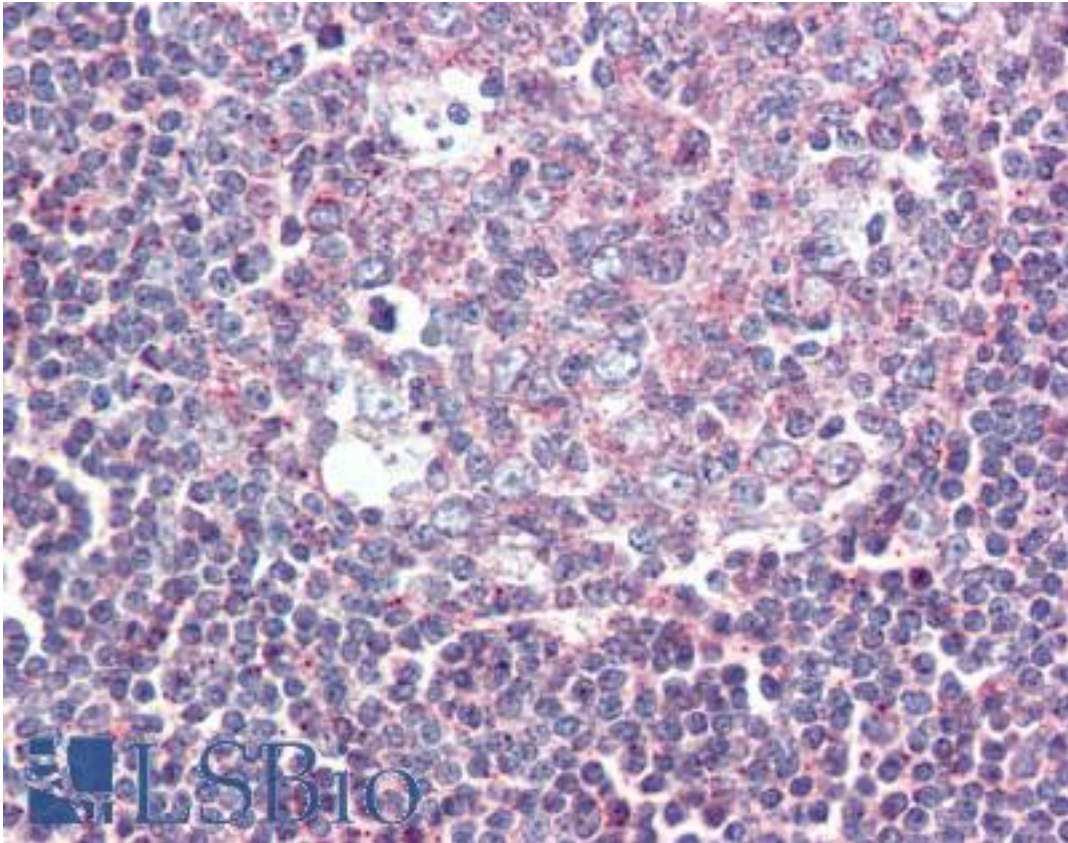


GPR132 / G2A Rabbit anti-Human Polyclonal (Internal) Antibody - LS-A1605 - LSBio

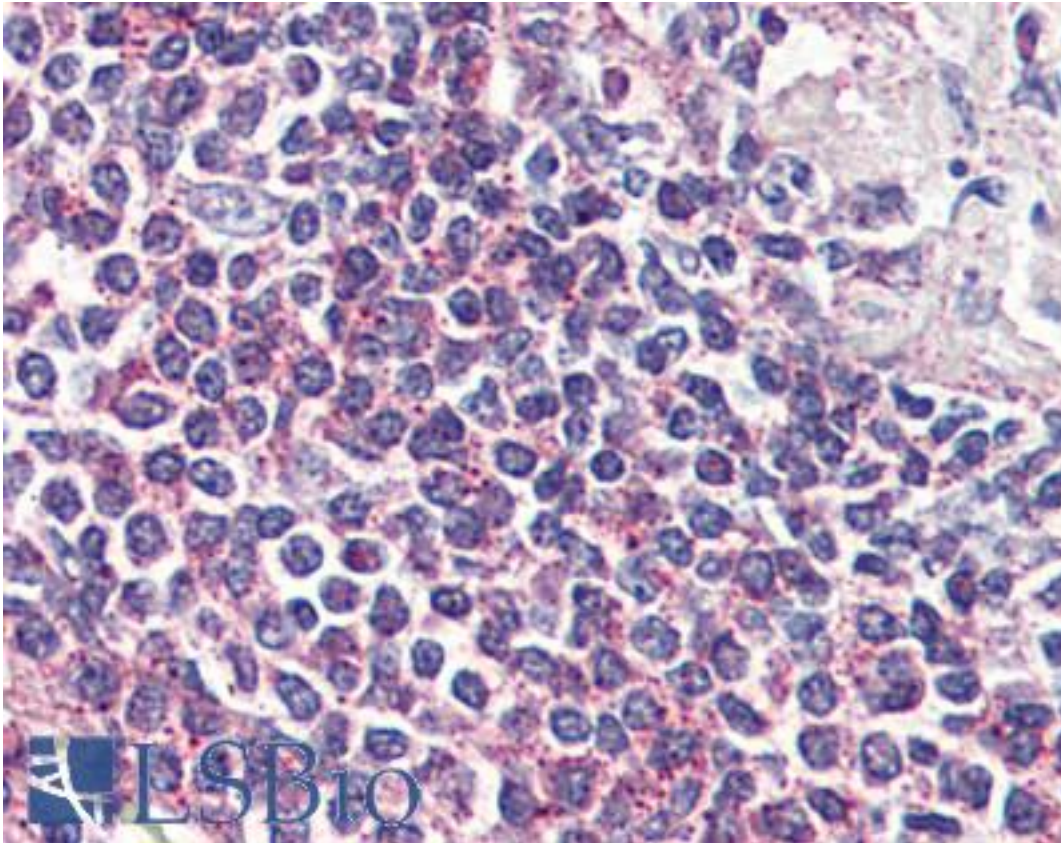
CatalogID:	LS-A1605
Target:	G protein-coupled receptor 132 (GPR132)
Synonyms:	GPR132 Antibody, G2A Antibody, G protein-coupled receptor 132 Antibody, G protein-coupled receptor G2A Antibody, G2 accumulation protein Antibody, G2a receptor Antibody
Family / Subfamily:	GPCR / Lysophospholipid/Lyso sphingolipid
Host	GPR132 antibody was produced in Rabbit
Clonality:	Polyclonal
Immunogen Species:	GPR132 / G2A antibody was raised against Human
Antigen Type:	Synthetic peptide
Immunogen:	GPR132 / G2A antibody was raised against synthetic 18 amino acid peptide from internal region of human GPR132 / G2A. Percent identity with other species by BLAST analysis: Human (100%); Gorilla, Marmoset (83%).
Specificity:	Human GPR132 / G2A. BLAST analysis of the peptide immunogen showed no homology with other human proteins.
Epitope:	Internal
Reactivity:	Human
Purification:	Immunoaffinity purified
Presentation:	PBS, 0.1% sodium azide.
Recommended Storage:	Long term: -70°C; Short term: +4°C
Usage Summary:	Immunohistochemistry: LS-A1605 was validated for use in immunohistochemistry on a panel of 21 formalin-fixed, paraffin-embedded (FFPE) human tissues after proteinase K antigen retrieval. After incubation with the primary antibody, slides were incubated with biotinylated secondary antibody, followed by alkaline phosphatase-streptavidin and chromogen. The stained slides were evaluated by a pathologist to confirm staining specificity. The optimal working concentration for LS-A1605 was determined to be 10 ug/ml.
Uses:	IHC - Paraffin (10 µg/ml), ELISA (Optimal dilution to be determined by the researcher)
Size:	50 µg
Concentration:	1 mg/ml

Immunohistochemistry Image:



Anti-GPR132 / G2A antibody LS-A1605 IHC of human tonsil. Immunohistochemistry of formalin-fixed, paraffin-embedded tissue after heat-induced antigen retrieval.

Immunohistochemistry Image:



Anti-GPR132 / G2A antibody LS-A1605 IHC of human spleen. Immunohistochemistry of formalin-fixed, paraffin-embedded tissue after heat-induced antigen retrieval.

Requested From:

Japan

Laboratory Reagent For In Vitro Research Use Only

Not for resale without prior written consent from LifeSpan BioSciences, Inc.

Created on 9/23/2014

© 2014 LifeSpan BioSciences