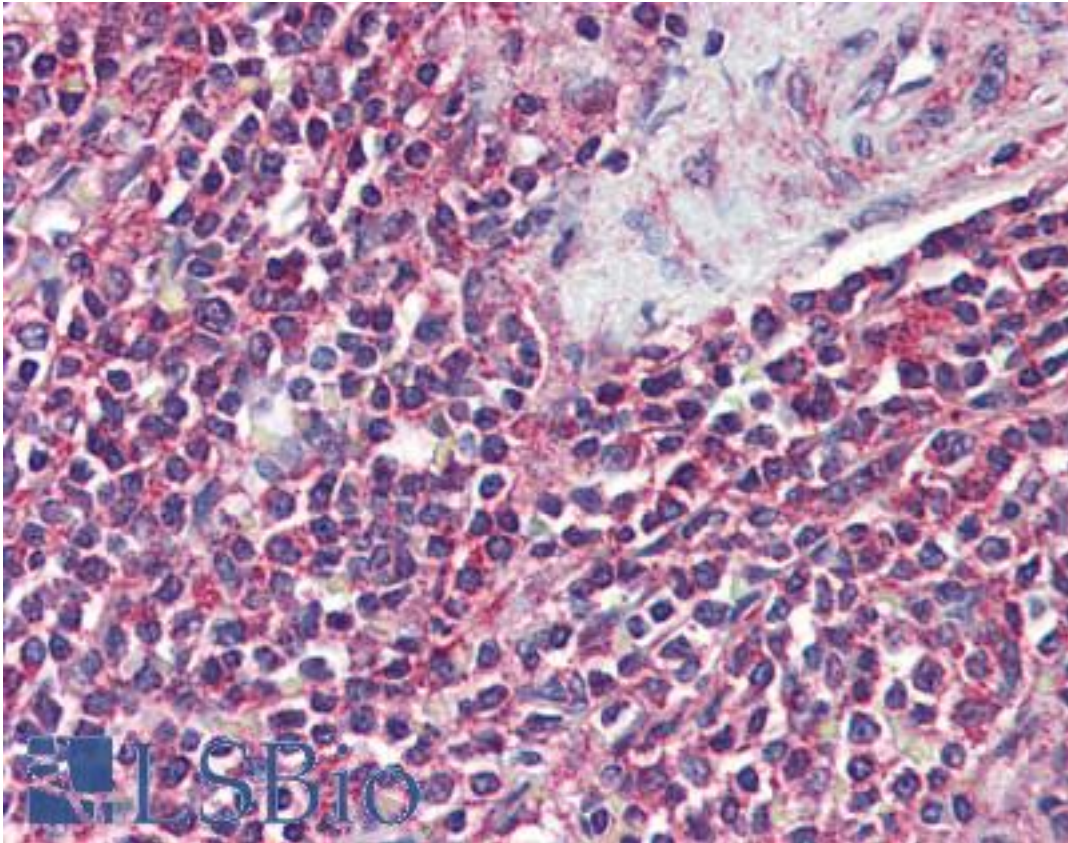


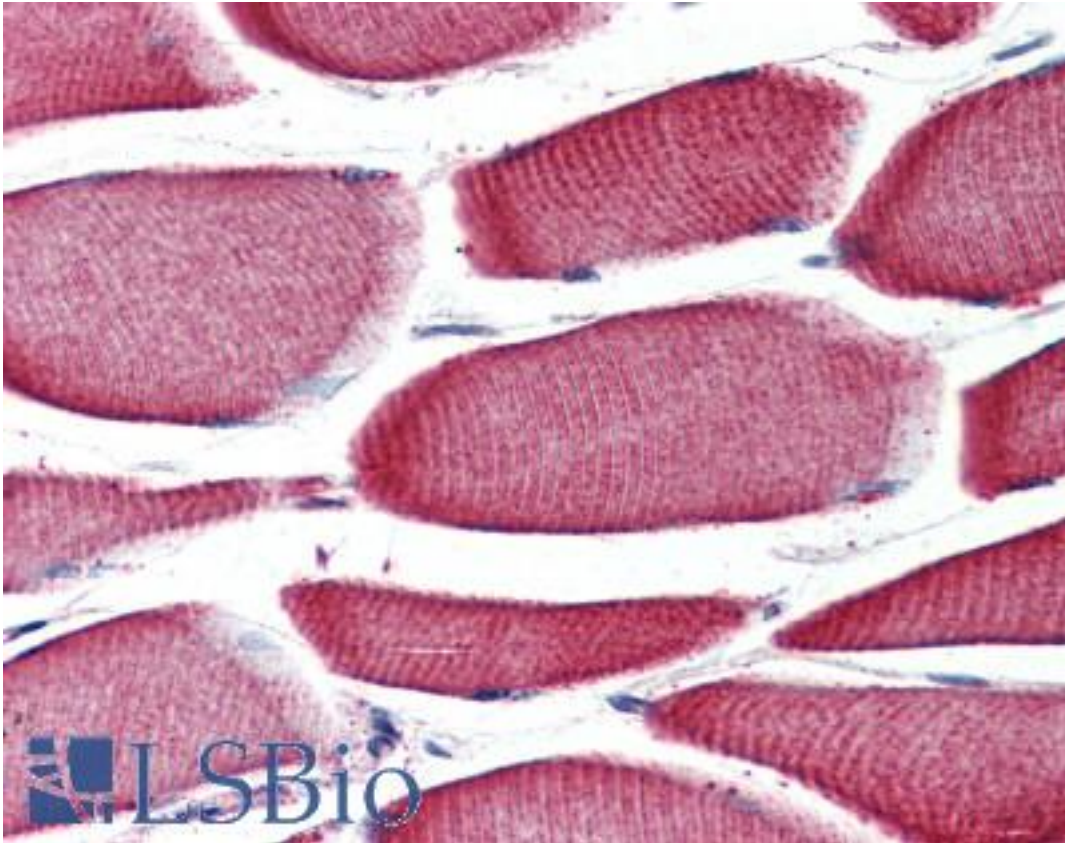
FFAR2 / GPR43 Rabbit anti-Human Polyclonal (Internal) Antibody - LS-A1586 - LSBio	
CatalogID:	LS-A1586
Target:	free fatty acid receptor 2 (FFAR2)
Synonyms:	FFAR2 Antibody, FFA2R Antibody, Free fatty acid receptor 2 Antibody, G protein-coupled receptor 43 Antibody, G-protein coupled receptor 43 Antibody, LSSIG Antibody, GPR43 Antibody, Gpcr43 Antibody
Family / Subfamily:	GPCR / Carboxylic Acid
Host	FFAR2 antibody was produced in Rabbit
Clonality:	Polyclonal
Immunogen Species:	FFAR2 / GPR43 antibody was raised against Human
Antigen Type:	Synthetic peptide
Immunogen:	FFAR2 / GPR43 antibody was raised against synthetic 17 amino acid peptide from internal region of human GPR43. Percent identity with other species by BLAST analysis: Human, Gorilla (100%); Monkey (94%).
Specificity:	Human GPR43. BLAST analysis of the peptide immunogen showed no homology with other human proteins.
Epitope:	Internal
Reactivity:	Human, Gorilla
Predicted Reactivity:	Monkey
Purification:	Immunoaffinity purified
Presentation:	PBS, 0.1% sodium azide.
Recommended Storage:	Long term: -70°C; Short term: +4°C
Usage Summary:	Immunohistochemistry: LS-A1586 was validated for use in immunohistochemistry on a panel of 21 formalin-fixed, paraffin-embedded (FFPE) human tissues after proteinase K antigen retrieval. After incubation with the primary antibody, slides were incubated with biotinylated secondary antibody, followed by alkaline phosphatase-streptavidin and chromogen. The stained slides were evaluated by a pathologist to confirm staining specificity. The optimal working concentration for LS-A1586 was determined to be 5 ug/ml.
Uses:	IHC - Paraffin (5 µg/ml) (Optimal dilution to be determined by the researcher)
Size:	50 µg
Concentration:	1 mg/ml

Immunohistochemistry Image:



Anti-GPR43 antibody LS-A1586 IHC of human spleen. Immunohistochemistry of formalin-fixed, paraffin-embedded tissue after heat-induced antigen retrieval.

Immunohistochemistry Image:



Anti-GPR43 antibody LS-A1586 IHC of human skeletal muscle. Immunohistochemistry of formalin-fixed, paraffin-embedded tissue after heat-induced antigen retrieval.

Requested From:

Japan

Laboratory Reagent For In Vitro Research Use Only

Not for resale without prior written consent from LifeSpan BioSciences, Inc.

Created on 9/23/2014

© 2014 LifeSpan BioSciences