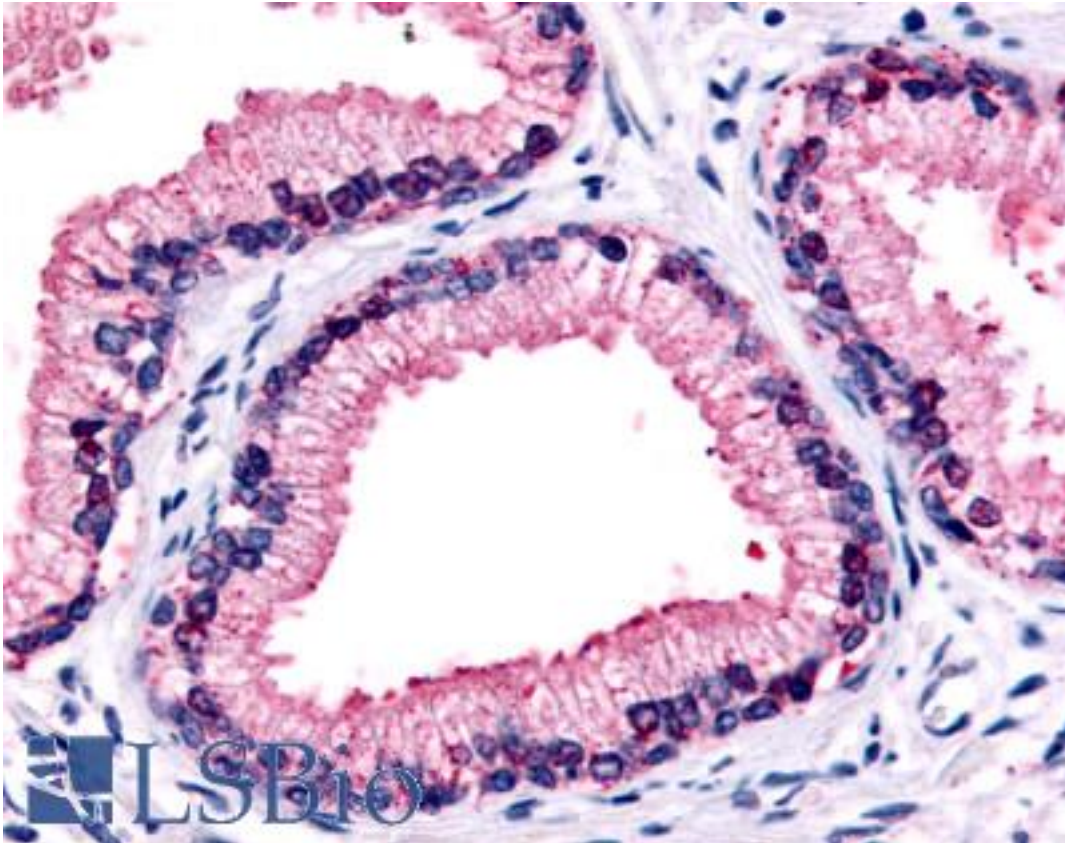


GPR87 Rabbit anti-Human Polyclonal (C-Terminus) Antibody - LS-A1584 - LSBio	
CatalogID:	LS-A1584
Target:	G protein-coupled receptor 87 (GPR87)
Synonyms:	GPR87 Antibody, G protein-coupled receptor 95 Antibody, GPR95 Antibody, G protein-coupled receptor 87 Antibody, G-protein coupled receptor 95 Antibody, Orphan GPCR 87 Antibody, KPG_002 Antibody, FKSG78 Antibody, G-protein coupled receptor 87 Antibody
Family / Subfamily:	GPCR / Orphan-A
Host	GPR87 antibody was produced in Rabbit
Clonality:	Polyclonal
Immunogen Species:	GPR87 antibody was raised against Human
Antigen Type:	Synthetic peptide
Immunogen:	GPR87 antibody was raised against synthetic 19 amino acid peptide from C-terminus of human GPR87. Percent identity with other species by BLAST analysis: Human, Gibbon, Monkey, Marmoset, Bovine, Dog, Bat, Hamster, Elephant, Panda, Horse, Rabbit, Pig, Opossum, Platypus (100%); Mouse, Rat (95%); Turkey, Chicken (89%).
Specificity:	Human GPR87. BLAST analysis of the peptide immunogen showed no homology with other human proteins, except YSK4 (63%).
Epitope:	C-Terminus
Reactivity:	Human, Gibbon, Monkey, Bat, Bovine, Dog, Hamster, Horse, Pig, Rabbit
Predicted Reactivity:	Mouse, Rat
Purification:	Immunoaffinity purified
Presentation:	PBS, 0.1% sodium azide.
Recommended Storage:	Long term: -70°C; Short term: +4°C
Uses:	IHC - Paraffin (6 - 14 µg/ml) (Optimal dilution to be determined by the researcher)
Size:	50 µg
Concentration:	1 mg/ml

Immunohistochemistry Image:



Anti-GPR87 antibody LS-A1584 IHC of human prostate, epithelium. Immunohistochemistry of formalin-fixed, paraffin-embedded tissue after heat-induced antigen retrieval.

Requested From:

Japan

Laboratory Reagent For In Vitro Research Use Only

Not for resale without prior written consent from LifeSpan BioSciences, Inc.

Created on 9/23/2014

© 2014 LifeSpan BioSciences