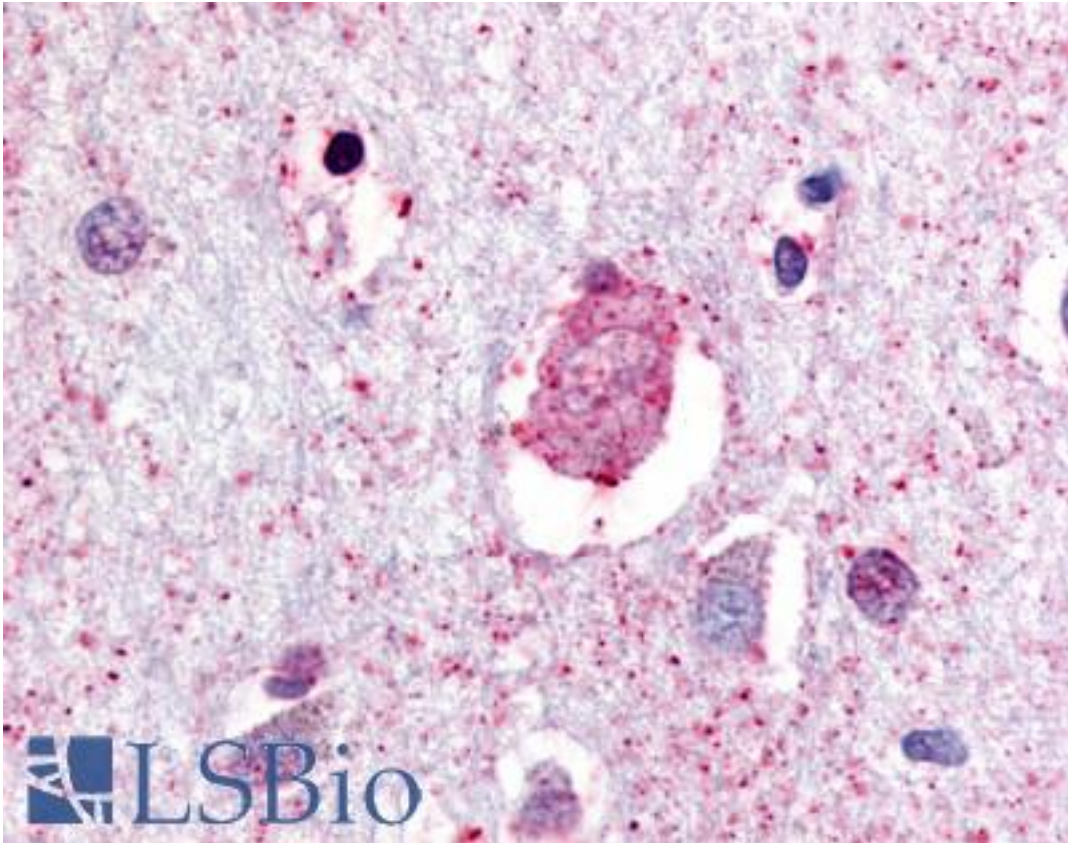


GPR88 Rabbit anti-Human Polyclonal (C-Terminus) Antibody - LS-A1572 - LSBio

CatalogID:	LS-A1572
Target:	G protein-coupled receptor 88 (GPR88)
Synonyms:	GPR88 Antibody, G-protein coupled receptor 88 Antibody, G protein-coupled receptor 88 Antibody, STRG Antibody, G protein coupled receptor 88 Antibody
Family / Subfamily:	GPCR / Orphan-A
Host	GPR88 antibody was produced in Rabbit
Clonality:	Polyclonal
Immunogen Species:	GPR88 antibody was raised against Human
Antigen Type:	Synthetic peptide
Immunogen:	GPR88 antibody was raised against synthetic 19 amino acid peptide from C-terminus of human GPR88. Percent identity with other species by BLAST analysis: Human, Gorilla, Monkey, Mouse, Rat, Rabbit, Pig (100%); Bovine (95%); Opossum (89%).
Specificity:	Human GPR88. BLAST analysis of the peptide immunogen showed no homology with other human proteins.
Epitope:	C-Terminus
Reactivity:	Human, Gorilla, Monkey, Mouse, Rat, Pig, Rabbit
Predicted Reactivity:	Bovine
Purification:	Immunoaffinity purified
Presentation:	PBS, 0.1% sodium azide.
Recommended Storage:	Long term: -70°C; Short term: +4°C
Uses:	IHC - Paraffin (12 - 23 µg/ml) (Optimal dilution to be determined by the researcher)
Size:	50 µg
Concentration:	1 mg/ml

Immunohistochemistry Image:



Anti-GPR88 antibody LS-A1572 IHC of human brain, neurons and glia.
Immunohistochemistry of formalin-fixed, paraffin-embedded tissue after heat-induced antigen retrieval.

Requested From:

Japan

Laboratory Reagent For In Vitro Research Use Only

Not for resale without prior written consent from LifeSpan BioSciences, Inc.

Created on 9/23/2014

© 2014 LifeSpan BioSciences