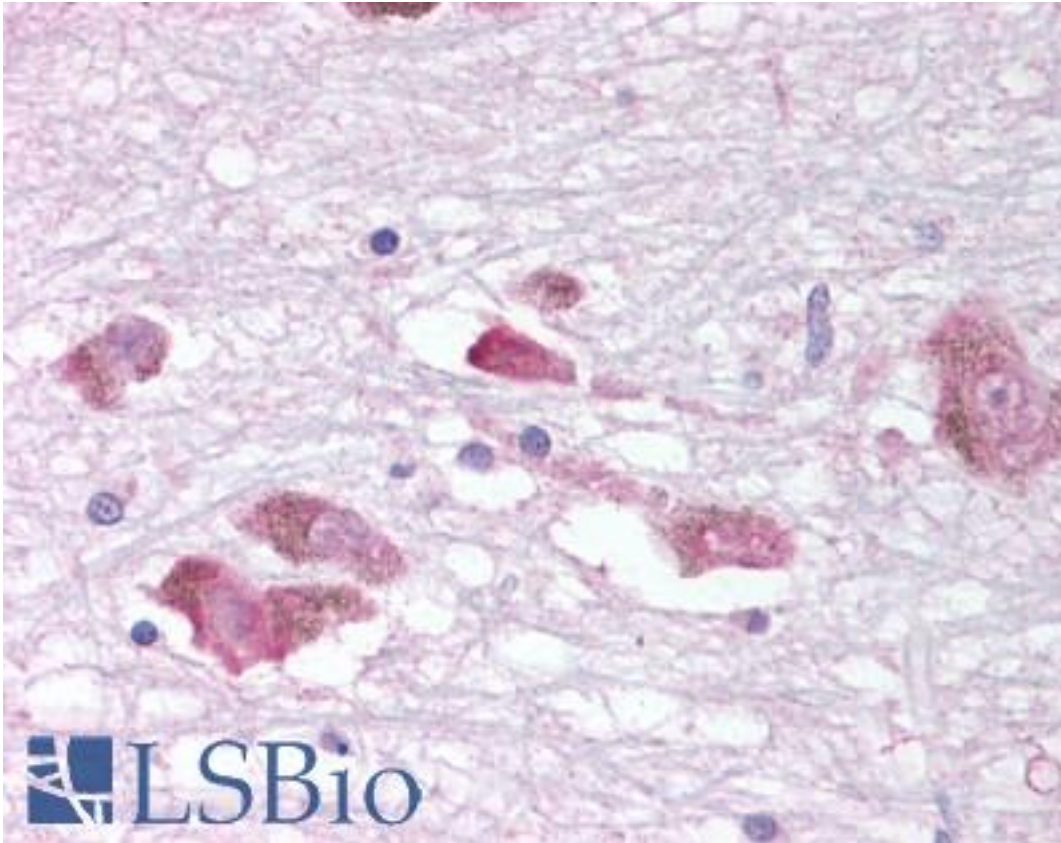


MCHR1 Rabbit anti-Human Polyclonal (C-Terminus) Antibody - LS-A1567 - LSBio	
CatalogID:	LS-A1567
Target:	melanin-concentrating hormone receptor 1 (MCHR1)
Synonyms:	MCHR1 Antibody, G-protein coupled receptor 24 Antibody, G protein-coupled receptor 24 Antibody, GPR24 Antibody, MCH-1R Antibody, MCH receptor 1 Antibody, MCH-R1 Antibody, MCH1R Antibody, Somatostatin-like receptor 1 Antibody, MCH 1 receptor Antibody, MCHR Antibody, SLC-1 Antibody, MCHR-1 Antibody, SLC1 Antibody
Family / Subfamily:	GPCR / Melanin-concentrating hormone receptor
Host	MCHR1 antibody was produced in Rabbit
Clonality:	Polyclonal
Immunogen Species:	MCHR1 antibody was raised against Human
Antigen Type:	Synthetic peptide
Immunogen:	MCHR1 antibody was raised against synthetic 18 amino acid peptide from C-terminus of human MCHR1. Percent identity with other species by BLAST analysis: Human, Chimpanzee, Gibbon, Monkey, Bovine, Dog, Panda (100%); Mouse, Rat, Horse, Pig (94%); Hamster, Elephant (89%).
Specificity:	Human MCHR1. BLAST analysis of the peptide immunogen showed no homology with other human proteins.
Epitope:	C-Terminus
Reactivity:	Human, Chimpanzee, Gibbon, Monkey, Bovine, Dog
Predicted Reactivity:	Mouse, Rat, Horse, Pig
Purification:	Immunoaffinity purified
Presentation:	PBS, 0.1% sodium azide.
Recommended Storage:	Long term: -70°C; Short term: +4°C
Usage Summary:	Immunohistochemistry: LS-A1567 was validated for use in immunohistochemistry on a panel of 21 formalin-fixed, paraffin-embedded (FFPE) human tissues after heat induced antigen retrieval in pH 6.0 citrate buffer. After incubation with the primary antibody, slides were incubated with biotinylated secondary antibody, followed by alkaline phosphatase-streptavidin and chromogen. The stained slides were evaluated by a pathologist to confirm staining specificity. The optimal working concentration for LS-A1567 was determined to be 10-18 ug/ml.
Uses:	IHC - Paraffin (10 µg/ml), ELISA (Optimal dilution to be determined by the researcher)
Size:	50 µg
Concentration:	1 mg/ml

Immunohistochemistry Image:



Anti-MCHR1 antibody LS-A1567 IHC of human brain, substantia nigra.
Immunohistochemistry of formalin-fixed, paraffin-embedded tissue after heat-induced antigen retrieval.

Requested From:

Japan

Laboratory Reagent For In Vitro Research Use Only

Not for resale without prior written consent from LifeSpan BioSciences, Inc.

Created on 9/23/2014

© 2014 LifeSpan BioSciences