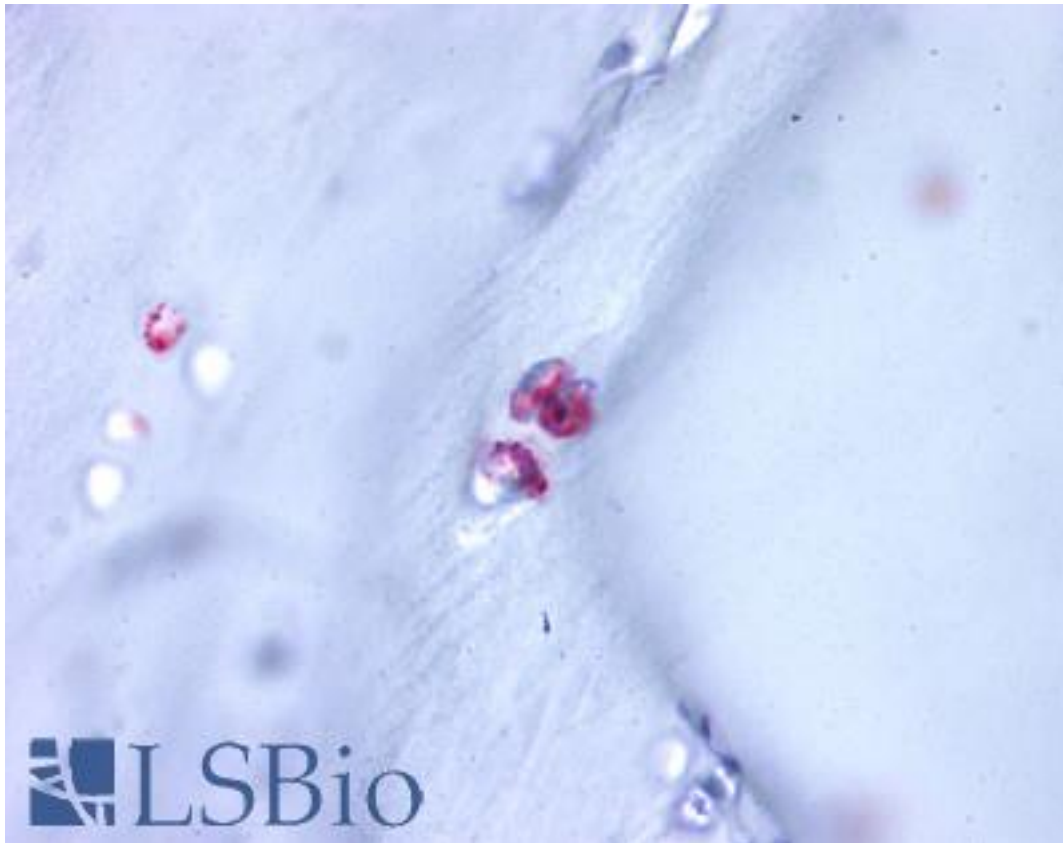


Aggrecan Rabbit anti-Human Polyclonal (C-Terminus) Antibody - LS-A1562 - LSBio

CatalogID:	LS-A1562
Target:	aggrecan (ACAN)
Synonyms:	ACAN Antibody, AGCAN Antibody, Aggrecan core protein Antibody, Acg1 Antibody, Aggrecan Antibody, CSPG1 Antibody, CSPGCP Antibody, CSPCP Antibody, AGC1 Antibody, Aggrecan 1 Antibody, Large aggregating proteoglycan Antibody, MSK16 Antibody, SEDK Antibody, MCSPG Antibody
Host	ACAN antibody was produced in Rabbit
Clonality:	Polyclonal
Immunogen Species:	Aggrecan antibody was raised against Human
Antigen Type:	Synthetic peptide
Immunogen:	Aggrecan antibody was raised against synthetic 16 amino acid peptide from C-terminus of human ACAN / Aggrecan. Percent identity with other species by BLAST analysis: Human, Gorilla, Monkey, Marmoset, Rat, Hamster (100%); Mouse (94%); Horse, Opossum, Platypus (88%); Bovine, Dog, Bat, Panda, Pig (81%).
Specificity:	Human ACAN / Aggrecan. BLAST analysis of the peptide immunogen showed no homology with other human proteins, except REG1A (50%).
Epitope:	C-Terminus
Reactivity:	Human, Gorilla, Monkey, Rat, Hamster
Predicted Reactivity:	Mouse
Purification:	Immunoaffinity purified
Presentation:	PBS, 0.1% sodium azide.
Recommended Storage:	Store at 4°C for short term applications. For long term storage, aliquot and store at -20°C.
Uses:	IHC - Paraffin (10 µg/ml) (Optimal dilution to be determined by the researcher)
Size:	50 µg
Concentration:	1 mg/ml

Immunohistochemistry Image:



Anti-ACAN / Aggrecan antibody LS-A1562 IHC of human cartilage. Immunohistochemistry of formalin-fixed, paraffin-embedded tissue after heat-induced antigen retrieval.

Requested From:	Japan
------------------------	-------

Laboratory Reagent For In Vitro Research Use Only

Not for resale without prior written consent from LifeSpan BioSciences, Inc.

Created on 9/23/2014

© 2014 LifeSpan BioSciences