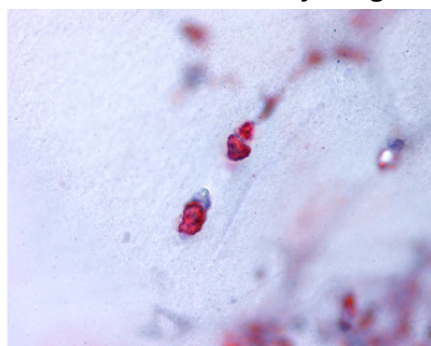


TACTGCTGACTGCTAGACTGACTACTGCTGACTGCTAGACTCAGACTCTCAGACTCT
Aggrecan 1 (chondroitin Sulfate Proteoglycan 1, Large Aggregating Proteoglycan, Antigen Identified By Monoclonal Antibody A0122) (ACAN) Rabbit anti-Human Polyclonal Antibody - LS-A1556 - LifeSpan BioSciences

| | |
|--------------------------------------|---|
| CatalogID: | LS-A1556 |
| Target: | Aggrecan 1 (chondroitin Sulfate Proteoglycan 1, Large Aggregating Proteoglycan, Antigen Identified By Monoclonal Antibody A0122) (ACAN) |
| Synonyms: | ACAN, acg1, aggrecan 1, aggrecan core protein, cartilage-specific proteoglycan core protein, chondroitin sulfate proteoglycan core protein 1, cspcp, cspg1, mcspg, mgsk16 |
| Host: | ACAN antibody was produced in Rabbit |
| Clonality: | Polyclonal |
| Antigen Species: | ACAN antibody was raised against Human |
| Antigen Type: | Synthetic peptide - KLH conjugated |
| Immunogen: | ACAN antibody was raised against synthetic peptide - KLH conjugated |
| Specificity: | N-terminal domain of human |
| Predicted Species Reactivity: | Undetermined |
| Purification: | Unpurified |
| Size: | 50 µg |
| Concentration: | 1 mg/ml |
| Presentation: | PBS, 0.1% sodium azide. |
| Recommended Storage: | Long term: -70°C; Short term: +4°C |
| Uses: | Immunohistochemistry - Paraffin (IHC-P) (7 µg/ml) (Optimal dilution to be determined by the researcher) |

Immunohistochemistry Image:



Bone, cartilage: Formalin-Fixed Paraffin-Embedded (FFPE)

| | |
|-----------------|--|
| Summary: | <p>Aggrecan Core Protein</p> <p>ESTs have been isolated from lung, uterus, brain, colon, bone, adrenal, stomach, breast, liver/spleen, fetal lung, fetal testis, and fetal B-cell libraries.</p> |
|-----------------|--|

Laboratory Reagent For In Vitro Research Use Only

Created on 4/8/2010

© 2010 LifeSpan BioSciences