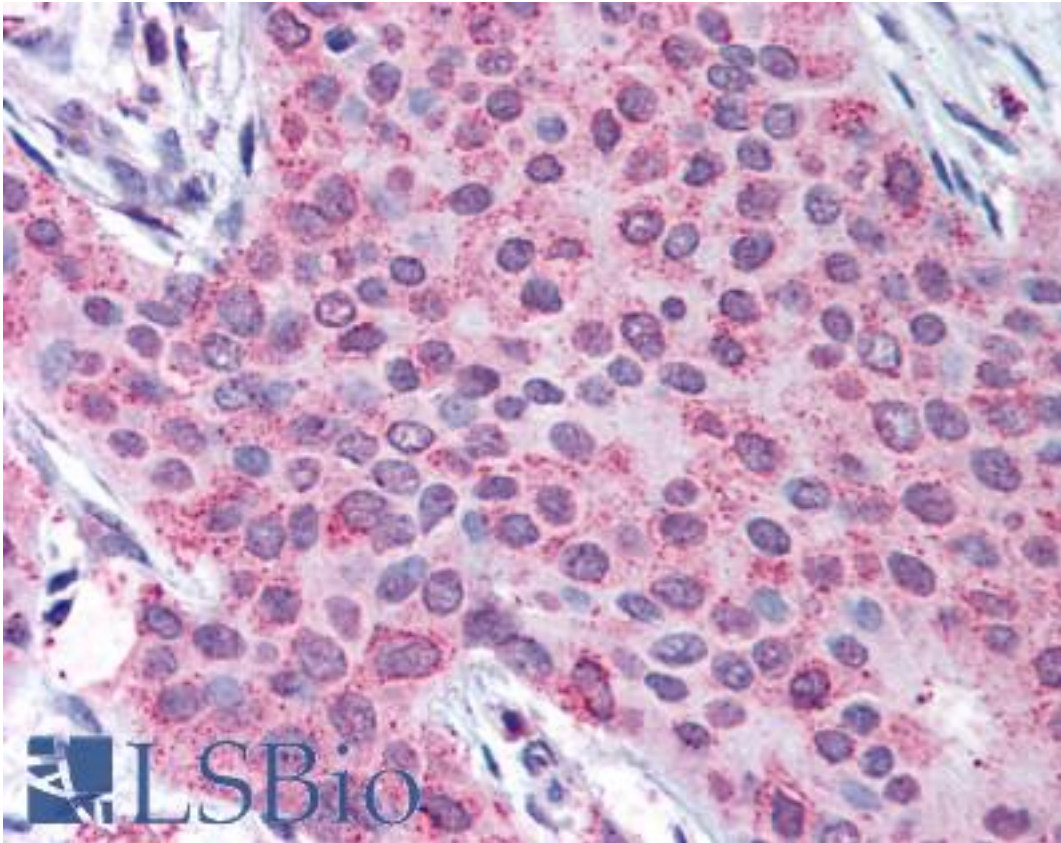


MMP13 / MMP-13 Rabbit anti-Human Polyclonal (C-Terminus) Antibody - LS-A1555 - LSBio	
<b>CatalogID:</b>	LS-A1555
<b>Target:</b>	matrix metalloproteinase 13 (collagenase 3) (MMP13)
<b>Synonyms:</b>	MMP13 Antibody, Collagenase 3 Antibody, Matrix metalloproteinase-13 Antibody, Interstitial collagenase Antibody, MANDP1 Antibody, MMP-13 Antibody, CLG3 Antibody
<b>Family / Subfamily:</b>	Protease / Metalloproteinase M10A
<b>Host</b>	MMP13 antibody was produced in Rabbit
<b>Clonality:</b>	Polyclonal
<b>Immunogen Species:</b>	MMP13 / MMP-13 antibody was raised against Human
<b>Antigen Type:</b>	Synthetic peptide
<b>Immunogen:</b>	MMP13 / MMP-13 antibody was raised against synthetic 17 amino acid peptide from C-terminus of human MMP13. Percent identity with other species by BLAST analysis: Human, Gorilla, Gibbon, Monkey (100%); Marmoset, Dog, Bovine, Elephant (94%); Panda, Horse, Rabbit, Pig (88%); Mouse, Rat, Sheep (82%).
<b>Specificity:</b>	Human MMP13. BLAST analysis of the peptide immunogen showed no homology with other human proteins.
<b>Epitope:</b>	C-Terminus
<b>Reactivity:</b>	Human, Gorilla, Gibbon
<b>Predicted Reactivity:</b>	Monkey, Bovine, Dog
<b>Purification:</b>	Immunoaffinity purified
<b>Presentation:</b>	PBS, 0.1% sodium azide.
<b>Recommended Storage:</b>	Store at 4°C for short term applications. For long term storage, aliquot and store at -20°C.
<b>Usage Summary:</b>	Immunohistochemistry: LS-A1555 was validated for use in immunohistochemistry on a panel of 21 formalin-fixed, paraffin-embedded (FFPE) human tissues after heat induced antigen retrieval in pH 6.0 citrate buffer. After incubation with the primary antibody, slides were incubated with biotinylated secondary antibody, followed by alkaline phosphatase-streptavidin and chromogen. The stained slides were evaluated by a pathologist to confirm staining specificity. The optimal working concentration for LS-A1555 was determined to be 50 ug/ml.
<b>Uses:</b>	IHC - Paraffin (50 µg/ml) (Optimal dilution to be determined by the researcher)
<b>Size:</b>	50 µg
<b>Concentration:</b>	1 mg/ml

**Immunohistochemistry Image:**



Anti-MMP13 antibody LS-A1555 IHC of human breast carcinoma. Immunohistochemistry of formalin-fixed, paraffin-embedded tissue after heat-induced antigen retrieval.

**Requested From:**

Japan

Laboratory Reagent For In Vitro Research Use Only

Not for resale without prior written consent from LifeSpan BioSciences, Inc.

Created on 9/23/2014

© 2014 LifeSpan BioSciences