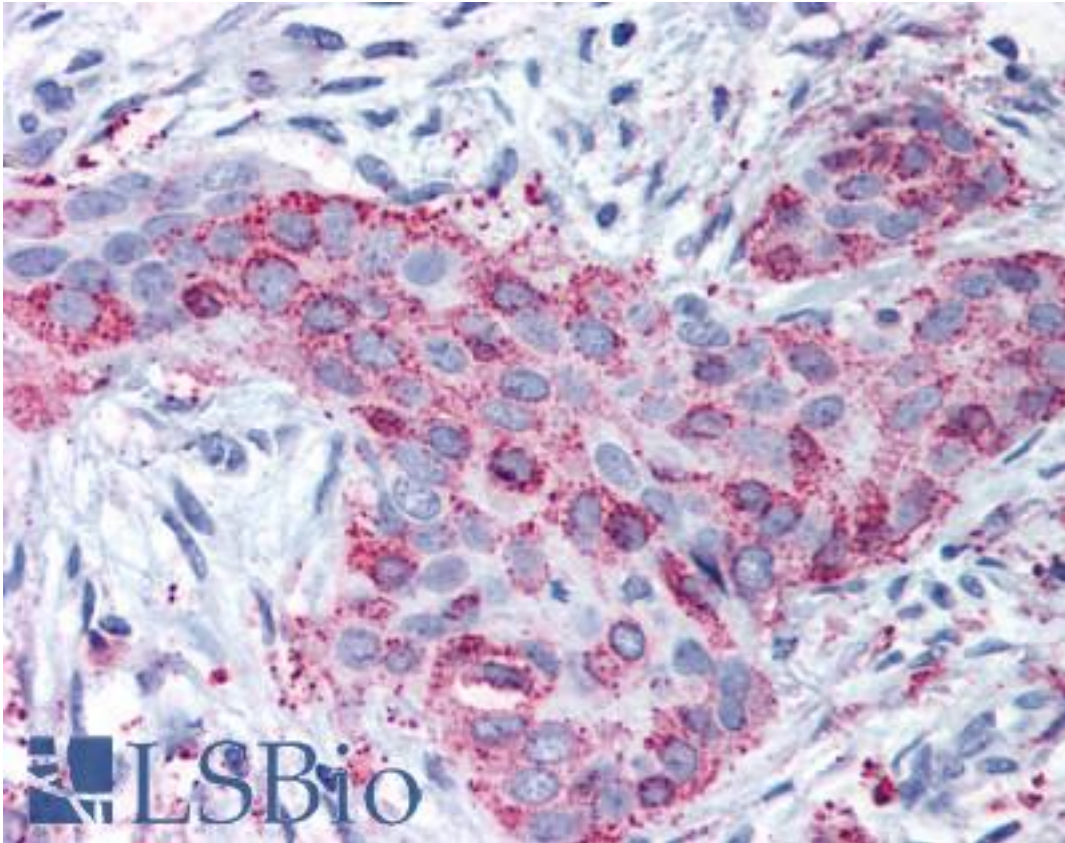


MMP13 / MMP-13 Rabbit anti-Human Polyclonal (Internal) Antibody - LS-A1553 - LSBio

CatalogID:	LS-A1553
Target:	matrix metalloproteinase 13 (collagenase 3) (MMP13)
Synonyms:	MMP13 Antibody, Collagenase 3 Antibody, Matrix metalloproteinase-13 Antibody, Interstitial collagenase Antibody, MANDP1 Antibody, MMP-13 Antibody, CLG3 Antibody
Family / Subfamily:	Protease / Metalloproteinase M10A
Host	MMP13 antibody was produced in Rabbit
Clonality:	Polyclonal
Immunogen Species:	MMP13 / MMP-13 antibody was raised against Human
Antigen Type:	Synthetic peptide
Immunogen:	MMP13 / MMP-13 antibody was raised against synthetic 18 amino acid peptide from internal region of human MMP13. Percent identity with other species by BLAST analysis: Human, Gorilla, Gibbon, Monkey, Marmoset, Elephant, Panda, Horse, Rabbit, Pig (100%); Mouse, Rat, Sheep, Dog, Hamster (94%); Bovine, Opossum, Turkey (89%); Chicken (83%).
Specificity:	Human MMP13. BLAST analysis of the peptide immunogen showed no homology with other human proteins.
Epitope:	Internal
Reactivity:	Human, Gorilla, Gibbon, Monkey, Horse, Pig, Rabbit
Predicted Reactivity:	Mouse, Rat, Dog, Hamster, Sheep
Purification:	Immunoaffinity purified
Presentation:	PBS, 0.1% sodium azide.
Recommended Storage:	Store at 4°C for short term applications. For long term storage, aliquot and store at -20°C.
Uses:	IHC - Paraffin (15 - 25 µg/ml) (Optimal dilution to be determined by the researcher)
Size:	50 µg
Concentration:	1 mg/ml

Immunohistochemistry Image:



Anti-MMP13 antibody LS-A1553 IHC of human breast carcinoma. Immunohistochemistry of formalin-fixed, paraffin-embedded tissue after heat-induced antigen retrieval.

Requested From:

Japan

Laboratory Reagent For In Vitro Research Use Only

Not for resale without prior written consent from LifeSpan BioSciences, Inc.

Created on 9/23/2014

© 2014 LifeSpan BioSciences