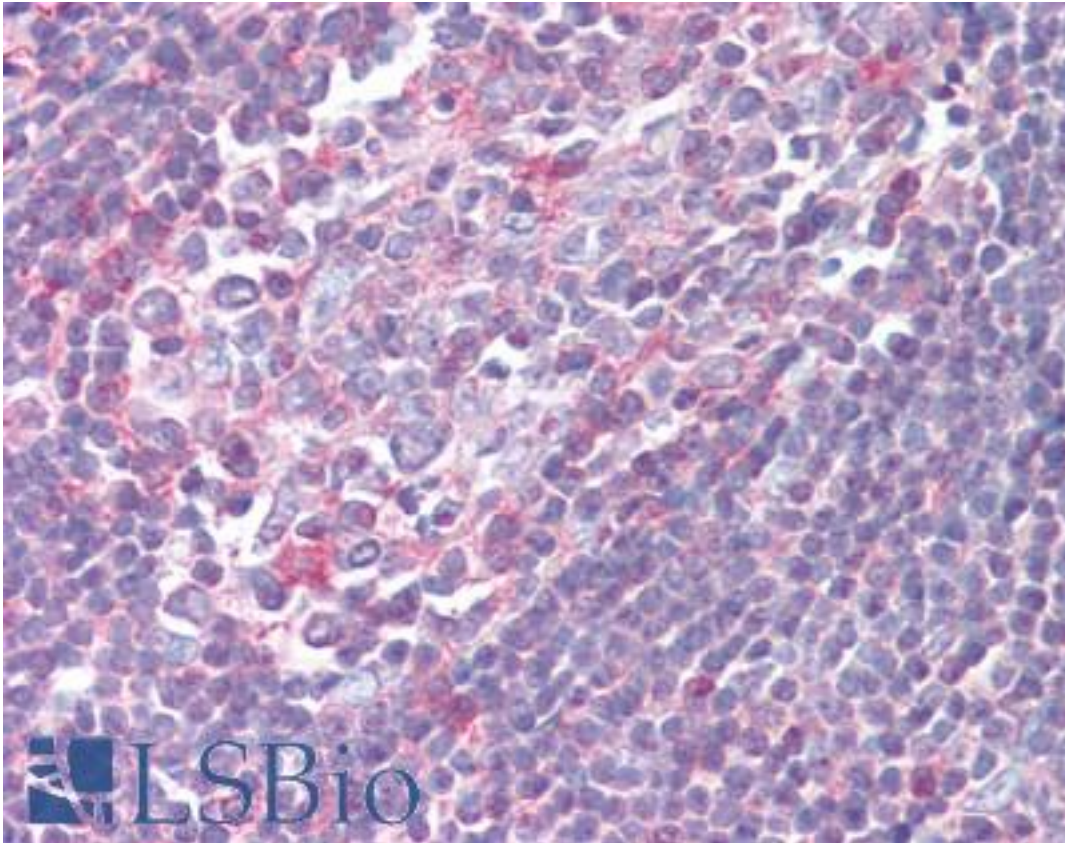


XCR1 Rabbit anti-Human Polyclonal (Cytoplasmic Domain) Antibody - LS-A155 - LSBio

CatalogID:	LS-A155
Target:	chemokine (C motif) receptor 1 (XCR1)
Synonyms:	XCR1 Antibody, CCXCR1 Antibody, Chemokine (C motif) receptor 1 Antibody, Chemokine XC receptor 1 Antibody, G protein-coupled receptor 5 Antibody, GPR5 Antibody, Lptn receptor Antibody, Lymphotoxin receptor Antibody, XC chemokine receptor 1 Antibody, G-protein coupled receptor 5 Antibody
Family / Subfamily:	GPCR / Chemokine
Host	XCR1 antibody was produced in Rabbit
Clonality:	Polyclonal
Immunogen Species:	XCR1 antibody was raised against Human
Antigen Type:	Synthetic peptide
Immunogen:	XCR1 antibody was raised against synthetic 19 amino acid peptide from 2nd cytoplasmic domain of human XCR1. Percent identity with other species by BLAST analysis: Human, Gorilla, Gibbon, Monkey (100%); Marmoset, Horse, Rabbit (89%); Bat, Pig (84%).
Specificity:	Human XCR1. BLAST analysis of the peptide immunogen showed no homology with other human proteins.
Epitope:	Cytoplasmic Domain
Reactivity:	Human, Gorilla, Gibbon, Monkey
Purification:	Immunoaffinity purified
Presentation:	PBS, 0.1% sodium azide.
Recommended Storage:	Long term: -70°C; Short term: +4°C
Uses:	IHC - Paraffin (5 µg/ml) (Optimal dilution to be determined by the researcher)
Size:	50 µg
Concentration:	0.5 mg/ml

Immunohistochemistry Image:



Anti-XCR1 antibody LS-A155 IHC of human tonsil. Immunohistochemistry of formalin-fixed, paraffin-embedded tissue after heat-induced antigen retrieval.

Requested From:

Japan

Laboratory Reagent For In Vitro Research Use Only

Not for resale without prior written consent from LifeSpan BioSciences, Inc.

Created on 9/23/2014

© 2014 LifeSpan BioSciences