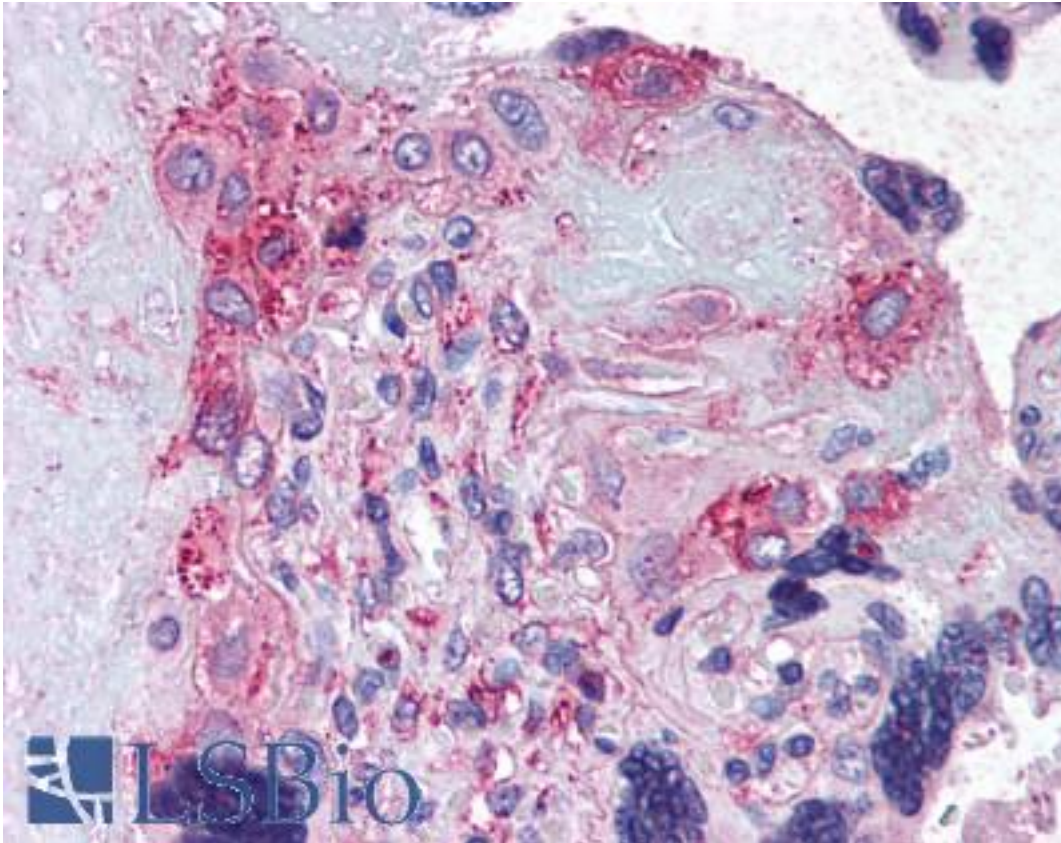


ADAMTS5 Rabbit anti-Human Polyclonal (Internal) Antibody - LS-A1540 - LSBio

CatalogID:	LS-A1540
Target:	ADAM metalloproteinase with thrombospondin type 1 motif, 5 (ADAMTS5)
Synonyms:	ADAMTS5 Antibody, Aggrecanase-2 Antibody, ADAM-TS 11 Antibody, ADAM-TS5 Antibody, ADAMTS-11 Antibody, ADAMTS11 Antibody, ADAM-TS 5 Antibody, ADAMTS-5 Antibody, ADMP-2 Antibody, ADMP2 Antibody
Family / Subfamily:	Protease / Metalloproteinase M12B
Host	ADAMTS5 antibody was produced in Rabbit
Clonality:	Polyclonal
Immunogen Species:	ADAMTS5 antibody was raised against Human
Antigen Type:	Synthetic peptide
Immunogen:	ADAMTS5 antibody was raised against synthetic 16 amino acid peptide from internal region of human ADAMTS5. Percent identity with other species by BLAST analysis: Human, Gorilla, Gibbon, Monkey, Marmoset (100%); Rat, Dog, Bat, Bovine, Hamster, Elephant, Panda, Rabbit, Pig (94%); Mouse, Horse, Turkey, Lizard, Xenopus (88%).
Specificity:	Human ADAMTS5. BLAST analysis of the peptide immunogen showed no homology with other human proteins.
Epitope:	Internal
Reactivity:	Human, Gorilla, Gibbon, Monkey
Predicted Reactivity:	Rat, Bat, Bovine, Dog, Hamster, Pig, Rabbit
Purification:	Immunoaffinity purified
Presentation:	PBS, 0.1% sodium azide.
Recommended Storage:	Store at 4°C for short term applications. For long term storage, aliquot and store at -20°C.
Uses:	IHC - Paraffin (20 µg/ml) (Optimal dilution to be determined by the researcher)
Size:	50 µg
Concentration:	1 mg/ml

Immunohistochemistry Image:



Anti-ADAMTS5 antibody LS-A1540 IHC of human placenta. Immunohistochemistry of formalin-fixed, paraffin-embedded tissue after heat-induced antigen retrieval.

Requested From:

Japan

Laboratory Reagent For In Vitro Research Use Only

Not for resale without prior written consent from LifeSpan BioSciences, Inc.

Created on 9/23/2014

© 2014 LifeSpan BioSciences