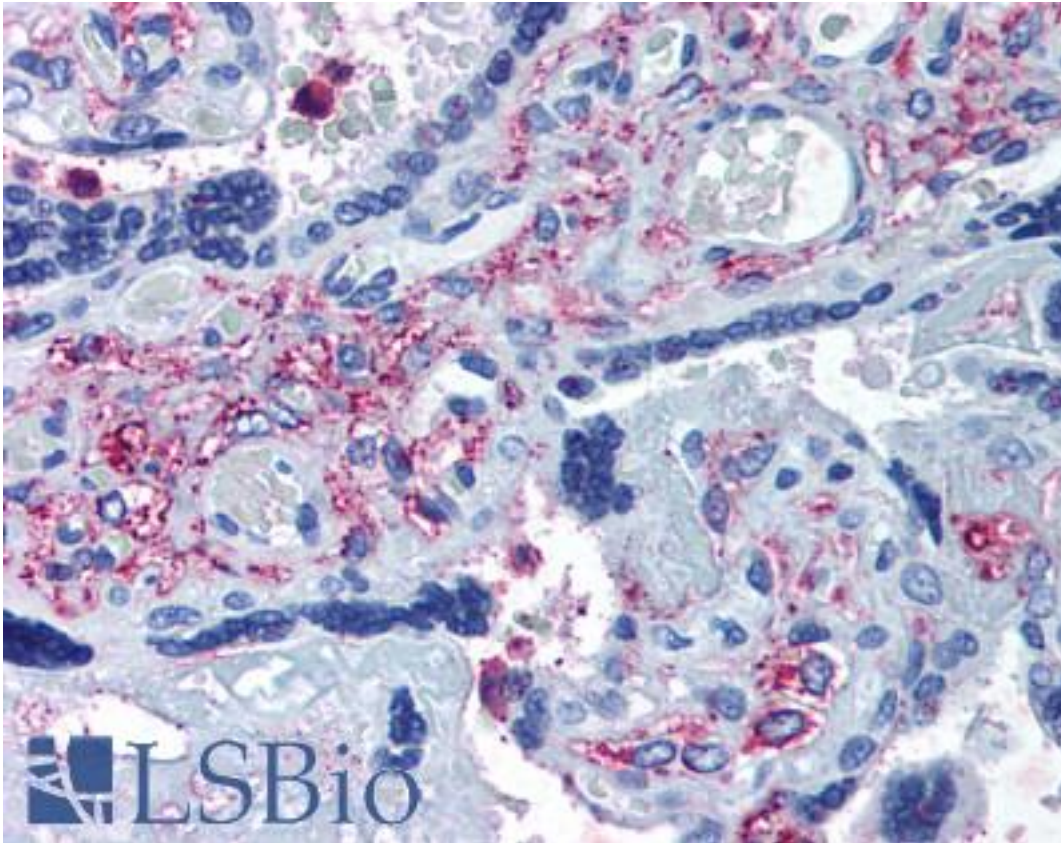


**ADAMTS5 Rabbit anti-Human Polyclonal (Internal) Antibody - LS-A1535 - LSBio**

<b>CatalogID:</b>	LS-A1535
<b>Target:</b>	ADAM metallopeptidase with thrombospondin type 1 motif, 5 (ADAMTS5)
<b>Synonyms:</b>	ADAMTS5 Antibody, Aggrecanase-2 Antibody, ADAM-TS 11 Antibody, ADAM-TS5 Antibody, ADAMTS-11 Antibody, ADAMTS11 Antibody, ADAM-TS 5 Antibody, ADAMTS-5 Antibody, ADMP-2 Antibody, ADMP2 Antibody
<b>Family / Subfamily:</b>	Protease / Metallopeptidase M12B
<b>Host</b>	ADAMTS5 antibody was produced in Rabbit
<b>Clonality:</b>	Polyclonal
<b>Immunogen Species:</b>	ADAMTS5 antibody was raised against Human
<b>Antigen Type:</b>	Synthetic peptide
<b>Immunogen:</b>	ADAMTS5 antibody was raised against synthetic 20 amino acid peptide from internal region of human ADAMTS5. Percent identity with other species by BLAST analysis: Human, Gorilla, Gibbon, Monkey, Marmoset, Mouse, Rat, Bovine, Panda, Pig (100%); Hamster, Elephant (95%); Lizard (85%); Stickleback (80%).
<b>Specificity:</b>	Human ADAMTS5. BLAST analysis of the peptide immunogen showed no homology with other human proteins.
<b>Epitope:</b>	Internal
<b>Reactivity:</b>	Human, Gorilla, Gibbon, Monkey, Mouse, Rat, Bovine, Pig
<b>Predicted Reactivity:</b>	Hamster
<b>Purification:</b>	Immunoaffinity purified
<b>Presentation:</b>	PBS, 0.1% sodium azide.
<b>Recommended Storage:</b>	Store at 4°C for short term applications. For long term storage, aliquot and store at -20°C.
<b>Uses:</b>	IHC - Paraffin (11 µg/ml) (Optimal dilution to be determined by the researcher)
<b>Size:</b>	50 µg
<b>Concentration:</b>	1 mg/ml

**Immunohistochemistry Image:**



Anti-ADAMTS5 antibody LS-A1535 IHC of human placenta. Immunohistochemistry of formalin-fixed, paraffin-embedded tissue after heat-induced antigen retrieval.

**Requested From:**

Japan

Laboratory Reagent For In Vitro Research Use Only

Not for resale without prior written consent from LifeSpan BioSciences, Inc.

Created on 9/23/2014

© 2014 LifeSpan BioSciences