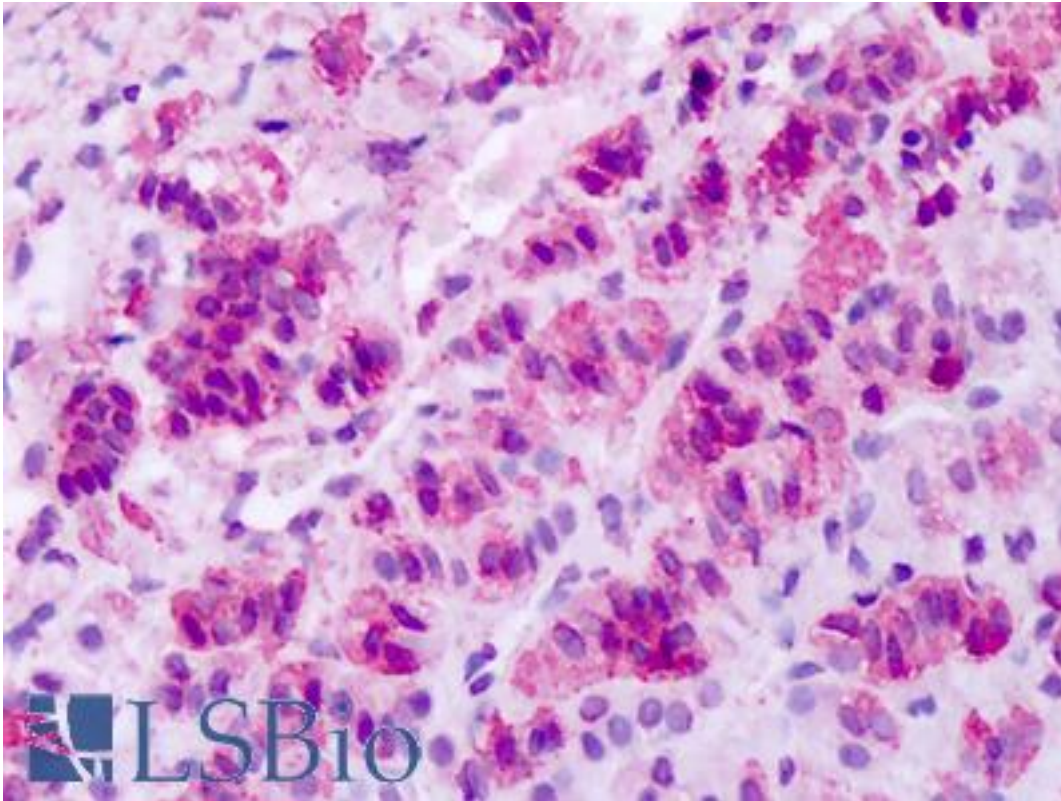


MCHR1 Rabbit anti-Human Polyclonal (N-Terminus) Antibody - LS-A1532 - LSBio

CatalogID:	LS-A1532
Target:	melanin-concentrating hormone receptor 1 (MCHR1)
Synonyms:	MCHR1 Antibody, G-protein coupled receptor 24 Antibody, G protein-coupled receptor 24 Antibody, GPR24 Antibody, MCH-1R Antibody, MCH receptor 1 Antibody, MCH-R1 Antibody, MCH1R Antibody, Somatostatin-like receptor 1 Antibody, MCH 1 receptor Antibody, MCHR Antibody, SLC-1 Antibody, MCHR-1 Antibody, SLC1 Antibody
Family / Subfamily:	GPCR / Melanin-concentrating hormone receptor
Host	MCHR1 antibody was produced in Rabbit
Clonality:	Polyclonal
Immunogen Species:	MCHR1 antibody was raised against Human
Antigen Type:	Synthetic peptide
Immunogen:	MCHR1 antibody was raised against synthetic 20 amino acid peptide from N-terminal extracellular domain of human MCHR1. Percent identity with other species by BLAST analysis: Human, Chimpanzee, Gibbon, Monkey (100%); Mouse (85%).
Specificity:	Human MCHR1. BLAST analysis of the peptide immunogen showed no homology with other human proteins.
Epitope:	N-Terminus
Reactivity:	Human, Chimpanzee, Gibbon, Monkey
Purification:	Immunoaffinity purified
Presentation:	PBS, 0.1% sodium azide.
Recommended Storage:	Long term: -70°C; Short term: +4°C
Uses:	IHC - Paraffin (15 - 30 µg/ml) (Optimal dilution to be determined by the researcher)
Size:	50 µg
Concentration:	1 mg/ml

Immunohistochemistry Image:



Anti-SLC1 / MCHR1 antibody IHC of human adrenal. Immunohistochemistry of formalin-fixed, paraffin-embedded tissue after heat-induced antigen retrieval. Antibody LS-A1532 dilution 15-30 ug/ml.

Requested From:

Japan

Laboratory Reagent For In Vitro Research Use Only

Not for resale without prior written consent from LifeSpan BioSciences, Inc.

Created on 9/23/2014

© 2014 LifeSpan BioSciences