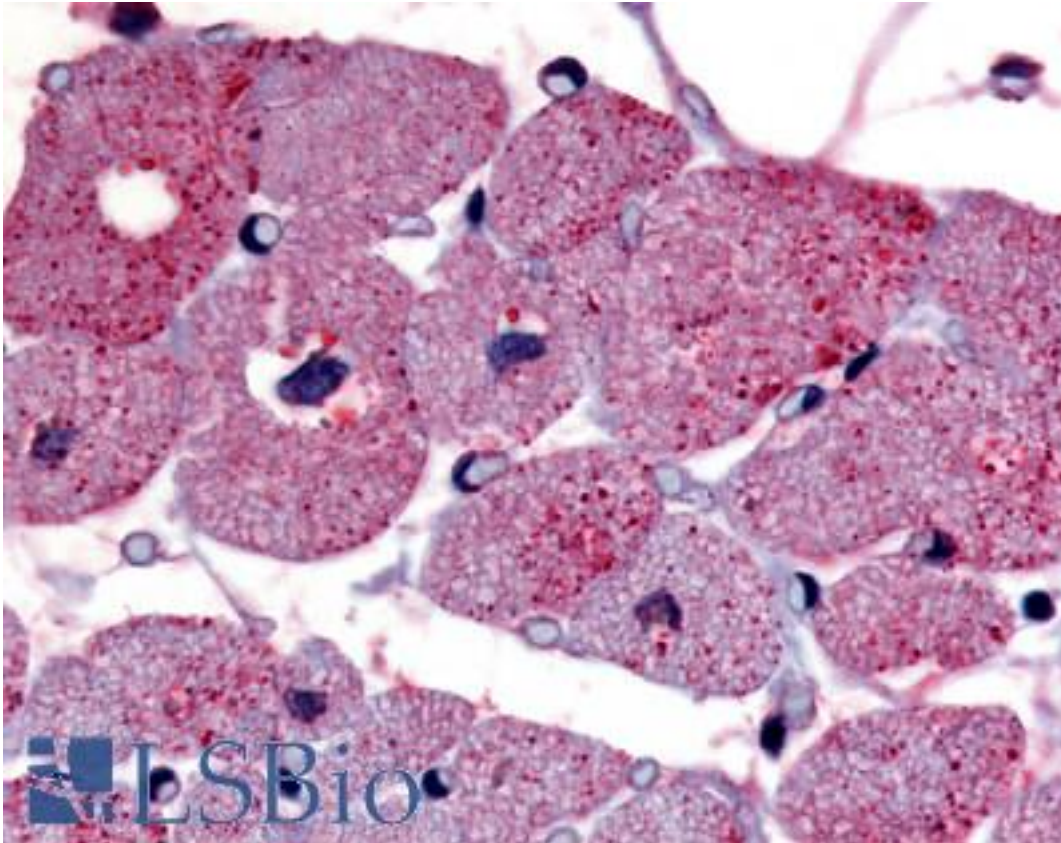


TPRA1 / GPR175 Rabbit anti-Human Polyclonal (Cytoplasmic Domain) Antibody - LS-A1525 - LSBio

CatalogID:	LS-A1525
Target:	transmembrane protein, adipocyte associated 1 (TPRA1)
Synonyms:	TPRA1 Antibody, G protein-coupled receptor 175 Antibody, Transmembrane protein 227 Antibody, TMEM227 Antibody, TPRA40 Antibody, GPR175 Antibody
Family / Subfamily:	GPCR / Orphan-U
Host	TPRA1 antibody was produced in Rabbit
Clonality:	Polyclonal
Immunogen Species:	TPRA1 / GPR175 antibody was raised against Human
Antigen Type:	Synthetic peptide
Immunogen:	TPRA1 / GPR175 antibody was raised against synthetic 16 amino acid peptide from 3rd cytoplasmic domain of human TPRA1 / GPR175. Percent identity with other species by BLAST analysis: Human, Gorilla, Monkey, Marmoset, Dog, Horse, Rabbit, Pig (100%); Mouse, Rat, Bovine, Bat, Elephant, Panda, Platypus (94%); Turkey, Chicken, Lizard, Xenopus (88%); Zebrafish, Stickleback (81%).
Specificity:	Human TPRA1 / GPR175. BLAST analysis of the peptide immunogen showed no homology with other human proteins.
Epitope:	Cytoplasmic Domain
Reactivity:	Human, Gorilla, Monkey, Dog, Horse, Pig, Rabbit
Predicted Reactivity:	Mouse, Rat, Bat, Bovine
Purification:	Immunoaffinity purified
Presentation:	PBS, 0.1% sodium azide.
Recommended Storage:	Long term: -70°C; Short term: +4°C
Uses:	IHC - Paraffin (20 µg/ml) (Optimal dilution to be determined by the researcher)
Size:	50 µg
Concentration:	1 mg/ml

Immunohistochemistry Image:



Anti-TPRA1 / GPR175 antibody LS-A1525 IHC of human cardiac myocytes.
Immunohistochemistry of formalin-fixed, paraffin-embedded tissue after heat-induced antigen retrieval.

Requested From:

Japan

Laboratory Reagent For In Vitro Research Use Only

Not for resale without prior written consent from LifeSpan BioSciences, Inc.

Created on 9/23/2014

© 2014 LifeSpan BioSciences