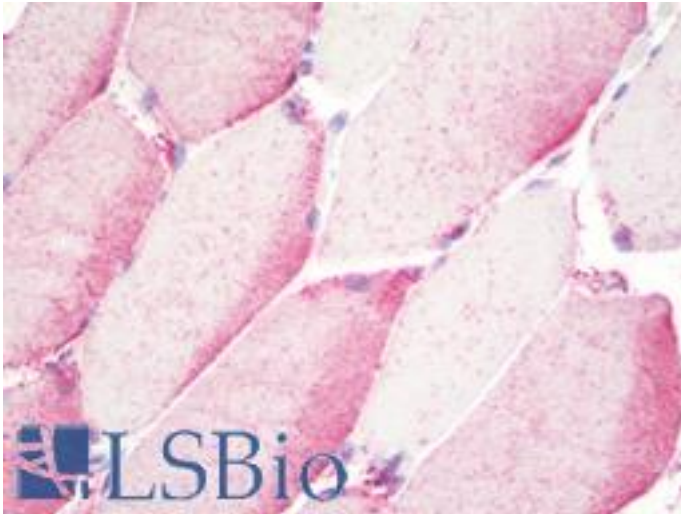


TPRA1 / GPR175 Rabbit anti-Human Polyclonal (Cytoplasmic Domain) Antibody - LS-A1523 - LSBio

CatalogID:	LS-A1523
Target:	transmembrane protein, adipocyte associated 1 (TPRA1)
Synonyms:	TPRA1 Antibody, G protein-coupled receptor 175 Antibody, Transmembrane protein 227 Antibody, TMEM227 Antibody, TPRA40 Antibody, GPR175 Antibody
Family / Subfamily:	GPCR / Orphan-U
Host	TPRA1 antibody was produced in Rabbit
Clonality:	Polyclonal
Immunogen Species:	TPRA1 / GPR175 antibody was raised against Human
Antigen Type:	Synthetic peptide
Immunogen:	TPRA1 / GPR175 antibody was raised against synthetic 17 amino acid peptide from 2nd cytoplasmic domain of human TPRA1 / GPR175. Percent identity with other species by BLAST analysis: Human, Gorilla, Gibbon, Marmoset, Mouse, Rat, Dog, Bovine, Bat, Hamster, Elephant, Panda, Horse, Pig, Platypus (100%); Monkey, Rabbit, Opossum, Turkey, Lizard, Zebrafish (94%); Chicken, Seabass, Salmon, Stickleback (88%).
Specificity:	Human TPRA1 / GPR175. BLAST analysis of the peptide immunogen showed no homology with other human proteins.
Epitope:	Cytoplasmic Domain
Reactivity:	Human, Gorilla, Gibbon, Mouse, Rat, Bat, Bovine, Dog, Hamster, Horse, Pig
Predicted Reactivity:	Monkey, Rabbit, Zebrafish
Purification:	Immunoaffinity purified
Presentation:	PBS, 0.1% sodium azide.
Recommended Storage:	Long term: -70°C; Short term: +4°C
Usage Summary:	Immunohistochemistry: LS-A1523 was validated for use in immunohistochemistry on a panel of 21 formalin-fixed, paraffin-embedded (FFPE) human tissues after heat induced antigen retrieval in pH 6.0 citrate buffer. After incubation with the primary antibody, slides were incubated with biotinylated secondary antibody, followed by alkaline phosphatase-streptavidin and chromogen. The stained slides were evaluated by a pathologist to confirm staining specificity. The optimal working concentration for LS-A1523 was determined to be 10 ug/ml.
Uses:	IHC - Paraffin (10 - 20 µg/ml) (Optimal dilution to be determined by the researcher)
Size:	50 µg
Concentration:	1 mg/ml

Immunohistochemistry Image:



Human Skeletal Muscle: Formalin-Fixed, Paraffin-Embedded (FFPE)

Requested From:

Japan

Laboratory Reagent For In Vitro Research Use Only

Not for resale without prior written consent from LifeSpan BioSciences, Inc.

Created on 9/23/2014

© 2014 LifeSpan BioSciences