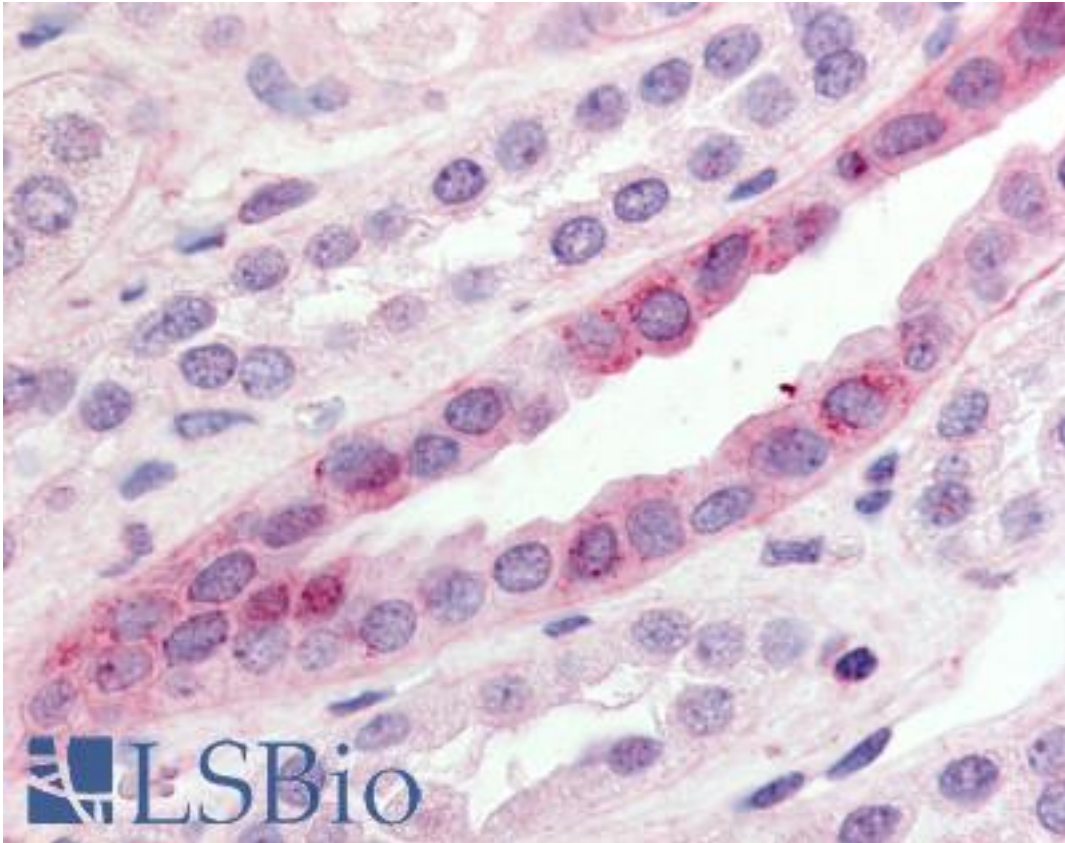


BOB / GPR15 Rabbit anti-Human Polyclonal (C-Terminus) Antibody - LS-A1512 - LSBio	
CatalogID:	LS-A1512
Target:	G protein-coupled receptor 15 (GPR15)
Synonyms:	GPR15 Antibody, Brother of Bonzo Antibody, G protein-coupled receptor 15 Antibody, G-protein coupled receptor 15 Antibody, BOB Antibody, Gpr-15 Antibody
Family / Subfamily:	GPCR / Orphan-A
Host	GPR15 antibody was produced in Rabbit
Clonality:	Polyclonal
Immunogen Species:	BOB / GPR15 antibody was raised against Human
Antigen Type:	Synthetic peptide
Immunogen:	BOB / GPR15 antibody was raised against synthetic 19 amino acid peptide from C-terminal cytoplasmic domain of human GPR15. Percent identity with other species by BLAST analysis: Human, Chimpanzee, Gorilla, Gibbon (100%); Monkey (95%); Marmoset, Mouse, Bat, Bovine, Elephant, Panda, Rabbit (89%); Dog, Hamster, Horse, Pig (84%).
Specificity:	Human GPR15. BLAST analysis of the peptide immunogen showed no homology with other human proteins.
Epitope:	C-Terminus
Reactivity:	Human, Chimpanzee, Gorilla, Gibbon
Predicted Reactivity:	Monkey
Purification:	Immunoaffinity purified
Presentation:	PBS, 0.1% sodium azide.
Recommended Storage:	Long term: -70°C; Short term: +4°C
Usage Summary:	Immunohistochemistry: LS-A1512 was validated for use in immunohistochemistry on a panel of 21 formalin-fixed, paraffin-embedded (FFPE) human tissues after heat induced antigen retrieval in pH 6.0 citrate buffer. After incubation with the primary antibody, slides were incubated with biotinylated secondary antibody, followed by alkaline phosphatase-streptavidin and chromogen. The stained slides were evaluated by a pathologist to confirm staining specificity. The optimal working concentration for LS-A1512 was determined to be 10 ug/ml.
Uses:	IHC - Paraffin (10 µg/ml), ELISA (Optimal dilution to be determined by the researcher)
Size:	50 µg
Concentration:	1 mg/ml

Immunohistochemistry Image:



Anti-GPR15 antibody LS-A1512 IHC of human kidney. Immunohistochemistry of formalin-fixed, paraffin-embedded tissue after heat-induced antigen retrieval.

Requested From:

Japan

Laboratory Reagent For In Vitro Research Use Only

Not for resale without prior written consent from LifeSpan BioSciences, Inc.

Created on 9/23/2014

© 2014 LifeSpan BioSciences