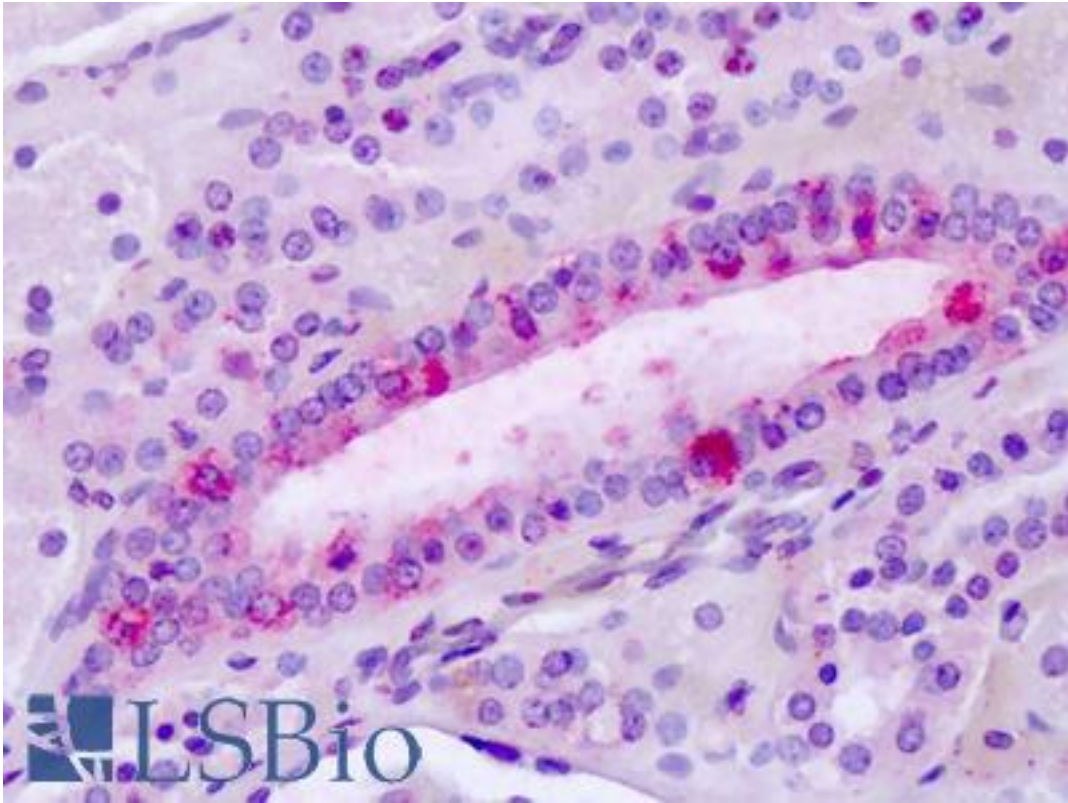


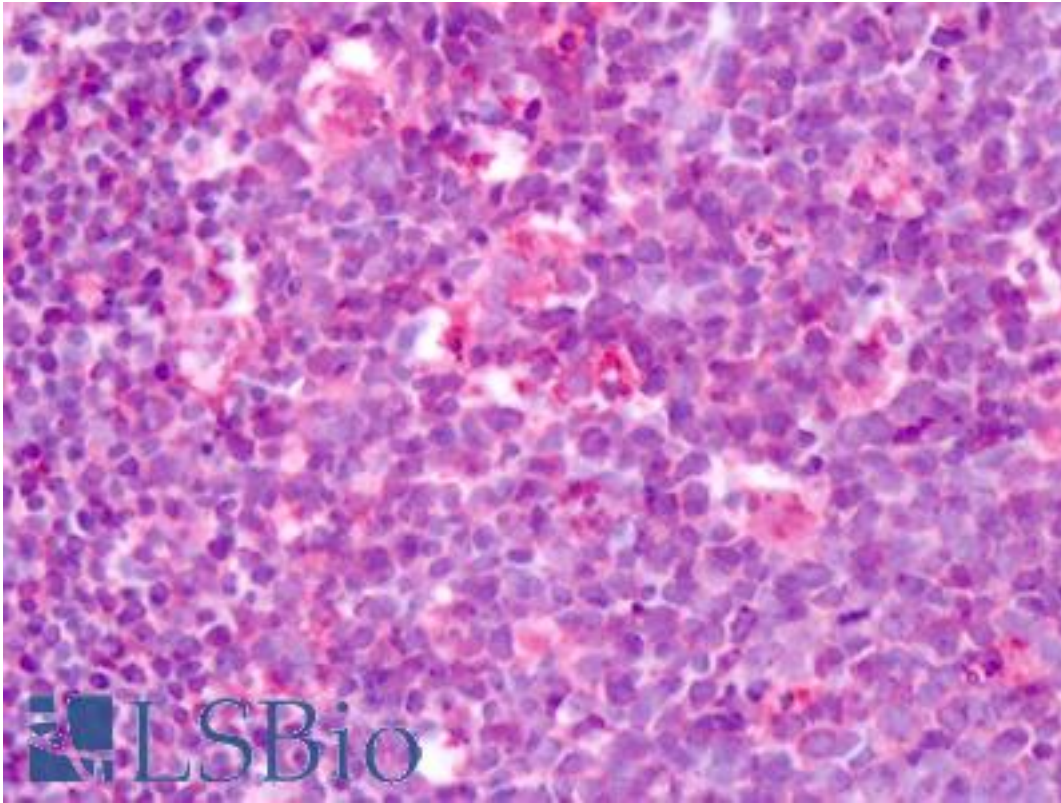
LPHN3 / Latrophilin-3 Rabbit anti-Human Polyclonal (C-Terminus) Antibody - LS-A1497 - LSBio	
CatalogID:	LS-A1497
Target:	latrophilin 3 (LPHN3)
Synonyms:	LPHN3 Antibody, CIRL3 Antibody, CIRL-3 Antibody, Lectomedin 3 Antibody, Lectomedin-3 Antibody, Lph3 Antibody, KIAA0768 Antibody, Latrophilin 3 Antibody, Latrophilin homolog 3 (cow) Antibody, CI3 latrotoxin receptor Antibody, Latrophilin-3 Antibody, LEC3 Antibody
Family / Subfamily:	GPCR / Orphan-B
Host	LPHN3 antibody was produced in Rabbit
Clonality:	Polyclonal
Immunogen Species:	LPHN3 / Latrophilin-3 antibody was raised against Human
Antigen Type:	Synthetic peptide
Immunogen:	LPHN3 / Latrophilin-3 antibody was raised against synthetic 16 amino acid peptide from C-terminus of human LPHN3. Percent identity with other species by BLAST analysis: Human, Gorilla, Gibbon, Monkey, Marmoset, Mouse, Rat, Hamster, Panda, Horse, Opossum, Turkey, Chicken, Platypus (100%); Zebrafish (88%); Pufferfish (81%).
Specificity:	Human LPHN3. BLAST analysis of the peptide immunogen showed no homology with other human proteins.
Epitope:	C-Terminus
Reactivity:	Human, Gorilla, Gibbon, Monkey, Mouse, Rat, Hamster, Horse, Chicken
Purification:	Immunoaffinity purified
Presentation:	PBS, 0.1% sodium azide.
Recommended Storage:	Long term: -70°C; Short term: +4°C
Uses:	IHC - Paraffin (4 - 6 µg/ml) (Optimal dilution to be determined by the researcher)
Size:	50 µg
Concentration:	1 mg/ml

Immunohistochemistry Image:



Anti-Latrophilin-3 / LPHN3 antibody IHC of human tonsil. Immunohistochemistry of formalin-fixed, paraffin-embedded tissue after heat-induced antigen retrieval. Antibody LS-A1497 dilution 4-6 ug/ml.

Immunohistochemistry Image:



Anti-Latrophilin-3 / LPHN3 antibody IHC of human tonsil. Immunohistochemistry of formalin-fixed, paraffin-embedded tissue after heat-induced antigen retrieval. Antibody LS-A1497 dilution 4-6 ug/ml.

Requested From:

Japan

Laboratory Reagent For In Vitro Research Use Only

Not for resale without prior written consent from LifeSpan BioSciences, Inc.

Created on 9/23/2014

© 2014 LifeSpan BioSciences