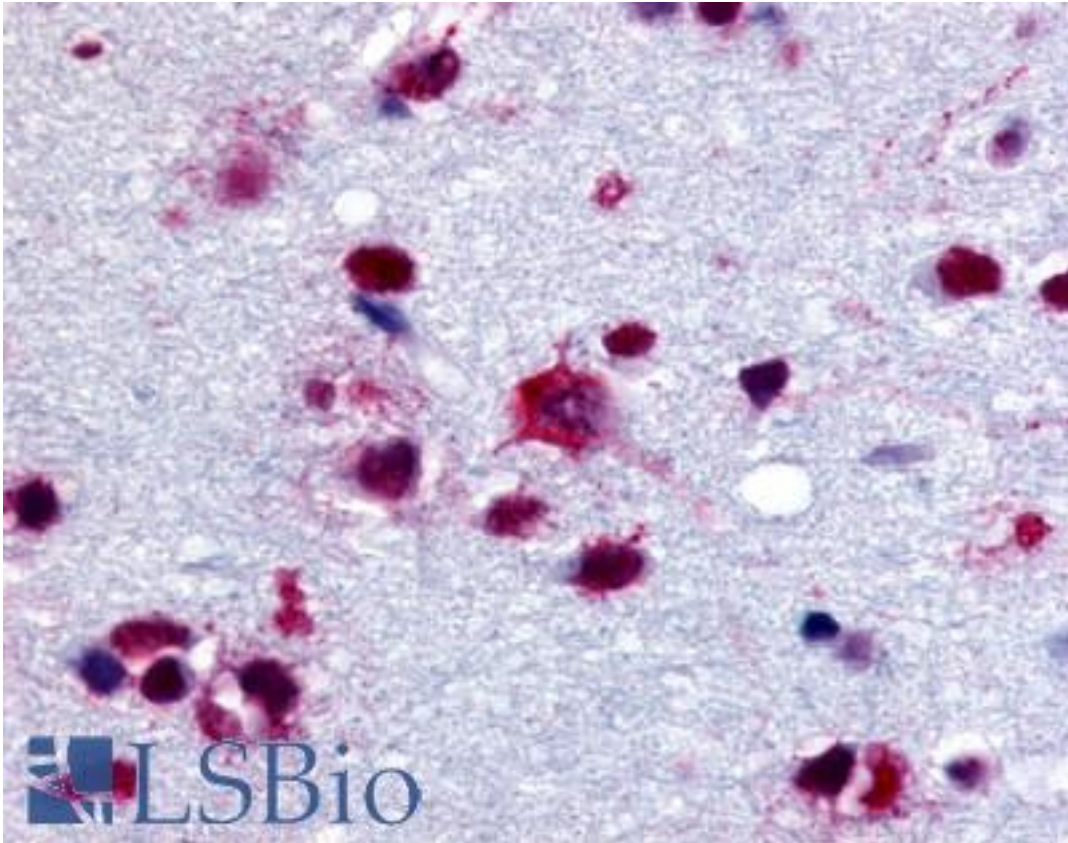


**GPBB / PYGB Rabbit anti-Human Polyclonal (C-Terminus) Antibody - LS-A1489 - LSBio**

<b>CatalogID:</b>	LS-A1489
<b>Target:</b>	phosphorylase, glycogen; brain (PYGB)
<b>Synonyms:</b>	PYGB Antibody, GPBB Antibody, Phosphorylase, glycogen Antibody, Phosphorylase, glycogen brain Antibody, Glycogen phosphorylase B Antibody
<b>Host</b>	PYGB antibody was produced in Rabbit
<b>Clonality:</b>	Polyclonal
<b>Immunogen Species:</b>	GPBB / PYGB antibody was raised against Human
<b>Antigen Type:</b>	Synthetic peptide
<b>Immunogen:</b>	GPBB / PYGB antibody was raised against synthetic 12 amino acid peptide from C-terminus of human PYGB. Percent identity with other species by BLAST analysis: Human, Gorilla, Gibbon, Monkey, Marmoset, Rabbit (100%); Orangutan, Mouse, Rat, Dog, Hamster, Elephant, Panda, Horse (92%); Turkey, Chicken, Platypus, Xenopus (83%).
<b>Specificity:</b>	Human PYGB. BLAST analysis of the peptide immunogen showed no homology with other human proteins.
<b>Epitope:</b>	C-Terminus
<b>Reactivity:</b>	Human, Gorilla, Gibbon, Monkey, Rabbit
<b>Predicted Reactivity:</b>	Orangutan, Mouse, Rat, Dog, Hamster, Horse
<b>Purification:</b>	Immunoaffinity purified
<b>Presentation:</b>	PBS, 0.1% sodium azide.
<b>Recommended Storage:</b>	Long term: -70°C; Short term: +4°C
<b>Uses:</b>	IHC - Paraffin (10 µg/ml) (Optimal dilution to be determined by the researcher)
<b>Size:</b>	50 µg
<b>Concentration:</b>	1 mg/ml

**Immunohistochemistry Image:**



Anti-PYGB antibody LS-A1489 IHC of human brain. Immunohistochemistry of formalin-fixed, paraffin-embedded tissue after heat-induced antigen retrieval.

**Requested From:**

Japan

Laboratory Reagent For In Vitro Research Use Only

Not for resale without prior written consent from LifeSpan BioSciences, Inc.

Created on 9/23/2014

© 2014 LifeSpan BioSciences