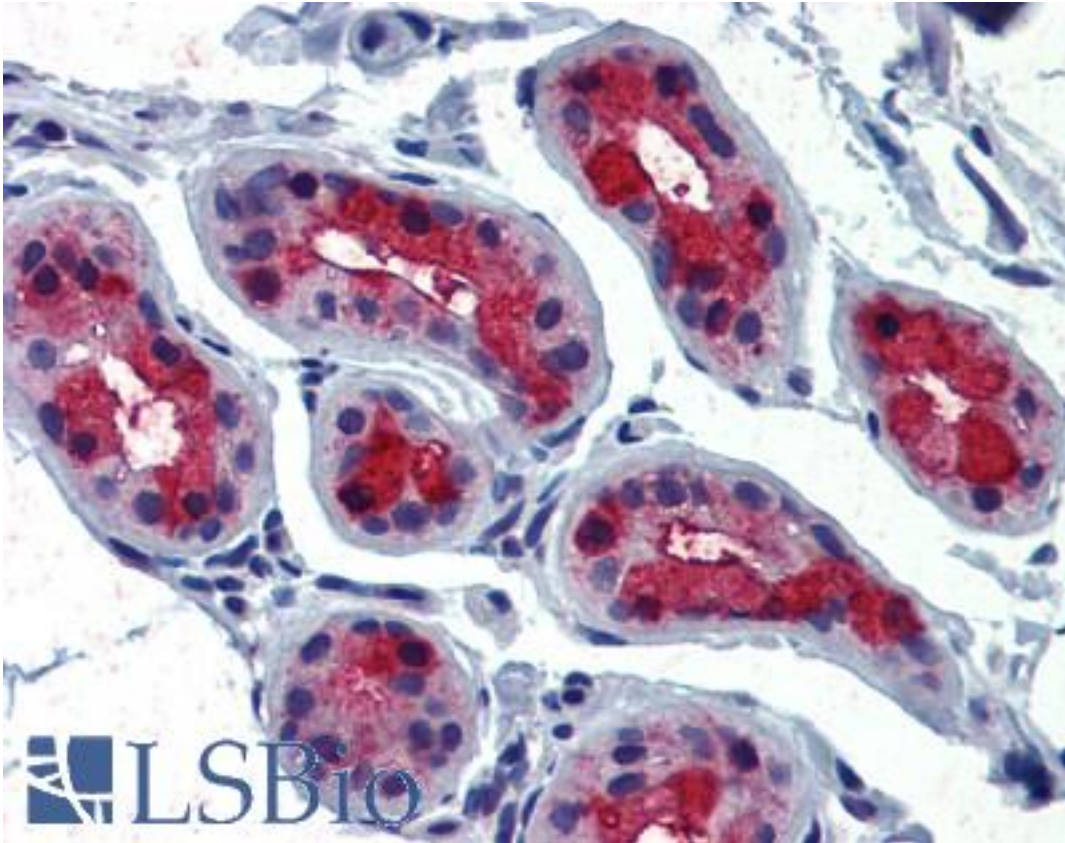


TSH Receptor / TSHR Rabbit anti-Human Polyclonal (C-Terminus) Antibody - LS-A1450 - LSBio	
CatalogID:	LS-A1450
Target:	thyroid stimulating hormone receptor (TSHR)
Synonyms:	TSHR Antibody, CHNG1 Antibody, HTSHR-I Antibody, LGR3 Antibody, Thyrotrophin receptor Antibody, TSH-R Antibody, TSH receptor Antibody, Thyrotropin receptor Antibody
Family / Subfamily:	GPCR / Glycoprotein hormone
Host	TSHR antibody was produced in Rabbit
Clonality:	Polyclonal
Immunogen Species:	TSH Receptor / TSHR antibody was raised against Human
Antigen Type:	Synthetic peptide
Immunogen:	TSH Receptor / TSHR antibody was raised against synthetic 20 amino acid peptide from C-terminus of human TSH Receptor. Percent identity with other species by BLAST analysis: Human, Gorilla, Gibbon, Monkey, Marmoset (100%); Bat, Bovine, Cat, Panda, Pig (90%); Sheep, Dog, Horse, Rabbit (85%); Mouse, Hamster (80%).
Specificity:	Human TSH Receptor. BLAST analysis of the peptide immunogen showed no homology with other human proteins.
Epitope:	C-Terminus
Reactivity:	Human, Gorilla, Gibbon, Monkey
Predicted Reactivity:	Bat, Bovine, Pig
Purification:	Immunoaffinity purified
Presentation:	PBS, 0.1% sodium azide.
Recommended Storage:	Long term: -70°C; Short term: +4°C
Uses:	IHC - Paraffin (7 - 12 µg/ml) (Optimal dilution to be determined by the researcher)
Size:	50 µg
Concentration:	1 mg/ml

Immunohistochemistry Image:



Anti-TSH Receptor antibody LS-A1450 IHC of human skin. Immunohistochemistry of formalin-fixed, paraffin-embedded tissue after heat-induced antigen retrieval.

Requested From:

Japan

Laboratory Reagent For In Vitro Research Use Only

Not for resale without prior written consent from LifeSpan BioSciences, Inc.

Created on 9/23/2014

© 2014 LifeSpan BioSciences