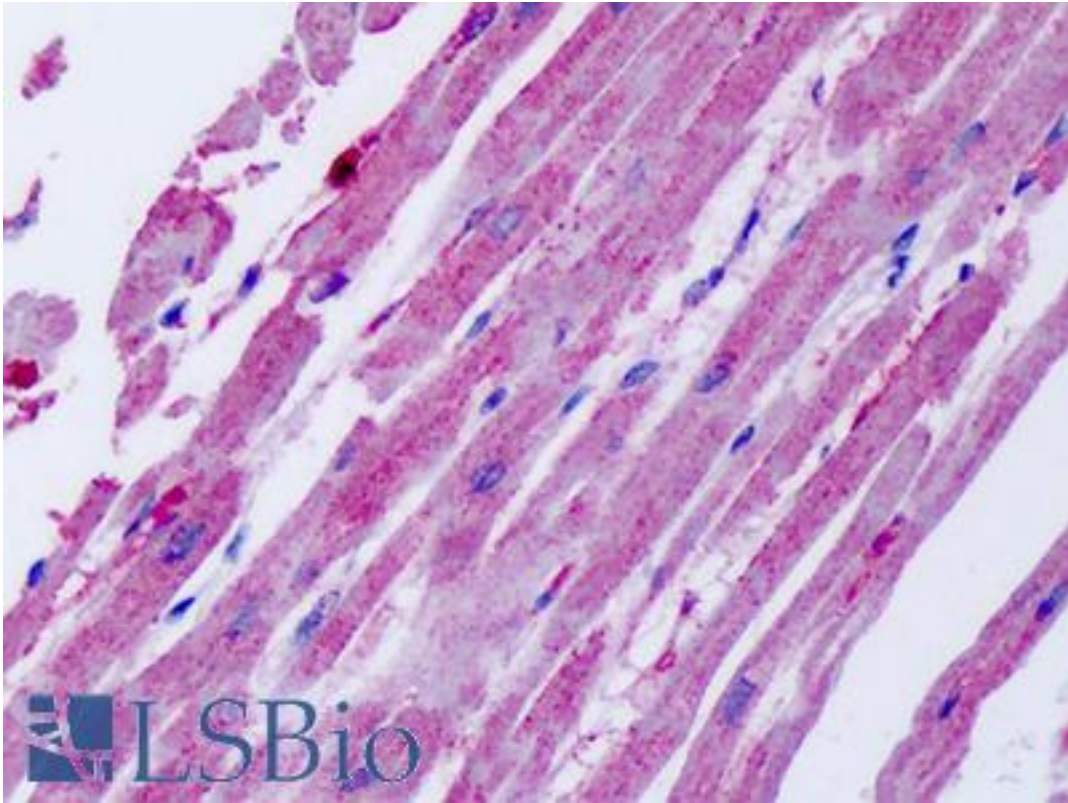


ACKR4 / CCRL1 / CCR11 Rabbit anti-Human Polyclonal (Cytoplasmic Domain) Antibody - LS-A1442 - LSBio

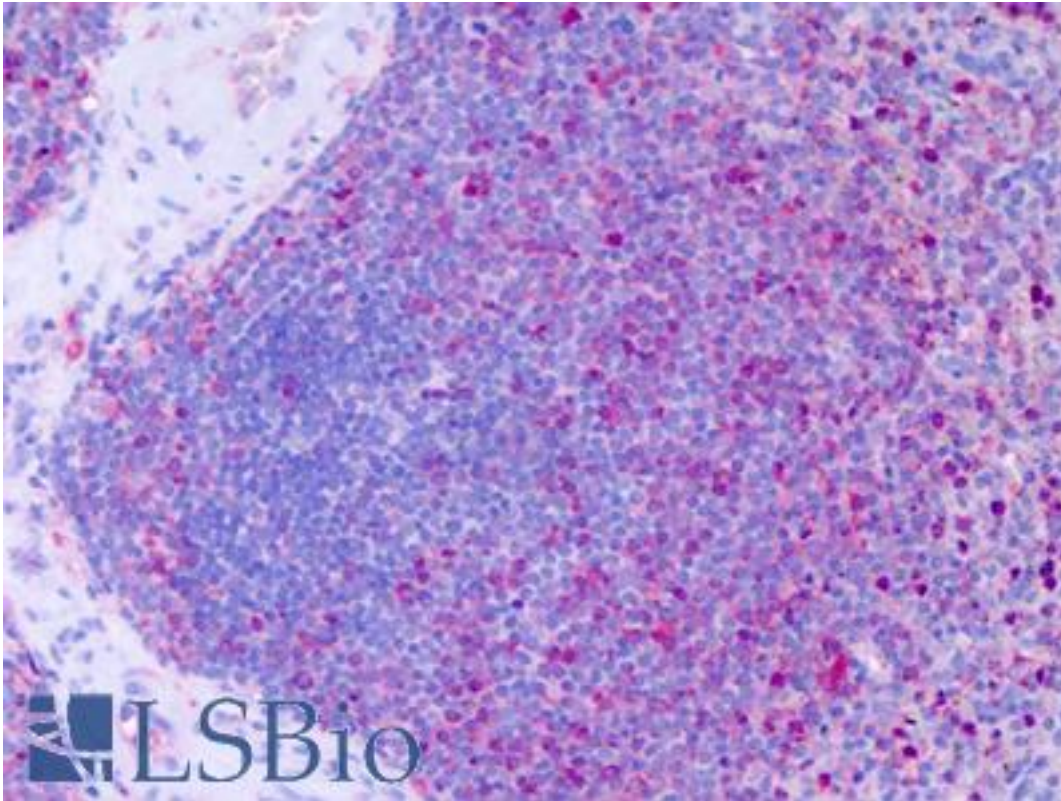
<b>CatalogID:</b>	LS-A1442
<b>Target:</b>	atypical chemokine receptor 4 (ACKR4)
<b>Synonyms:</b>	ACKR4 Antibody, C-C CKR-11 Antibody, CC-CKR-11 Antibody, CC chemokine receptor-like 1 Antibody, CCR11 Antibody, CCX CKR Antibody, C-C chemokine receptor type 11 Antibody, CKR-11 Antibody, CCRL1 Antibody, VSHK1 Antibody, CCR-11 Antibody, CCX-CKR Antibody, PPR1 Antibody
<b>Family / Subfamily:</b>	GPCR / Chemokine
<b>Host</b>	ACKR4 antibody was produced in Rabbit
<b>Clonality:</b>	Polyclonal
<b>Immunogen Species:</b>	ACKR4 / CCRL1 / CCR11 antibody was raised against Human
<b>Antigen Type:</b>	Synthetic peptide
<b>Immunogen:</b>	ACKR4 / CCRL1 / CCR11 antibody was raised against synthetic 19 amino acid peptide from 2nd cytoplasmic domain of human CCRL1. Percent identity with other species by BLAST analysis: Human, Gorilla, Gibbon (100%); Monkey, Rat, Bovine (84%).
<b>Specificity:</b>	Human CCRL1. BLAST analysis of the peptide immunogen showed no homology with other human proteins.
<b>Epitope:</b>	Cytoplasmic Domain
<b>Reactivity:</b>	Human, Gorilla, Gibbon
<b>Purification:</b>	Immunoaffinity purified
<b>Presentation:</b>	PBS, 0.1% sodium azide.
<b>Recommended Storage:</b>	Long term: -70°C; Short term: +4°C
<b>Uses:</b>	IHC - Paraffin (24 - 32 µg/ml) (Optimal dilution to be determined by the researcher)
<b>Size:</b>	50 µg
<b>Concentration:</b>	1 mg/ml

**Immunohistochemistry Image:**



Anti-CCRL1 / CCR11 antibody IHC of human heart. Immunohistochemistry of formalin-fixed, paraffin-embedded tissue after heat-induced antigen retrieval. Antibody LS-A1442 dilution 24-32 ug/ml.

**Immunohistochemistry Image:**



Anti-CCRL1 / CCR11 antibody IHC of human spleen. Immunohistochemistry of formalin-fixed, paraffin-embedded tissue after heat-induced antigen retrieval. Antibody LS-A1442 dilution 24-32 ug/ml.

**Requested From:**

Japan

Laboratory Reagent For In Vitro Research Use Only

Not for resale without prior written consent from LifeSpan BioSciences, Inc.

Created on 9/23/2014

© 2014 LifeSpan BioSciences