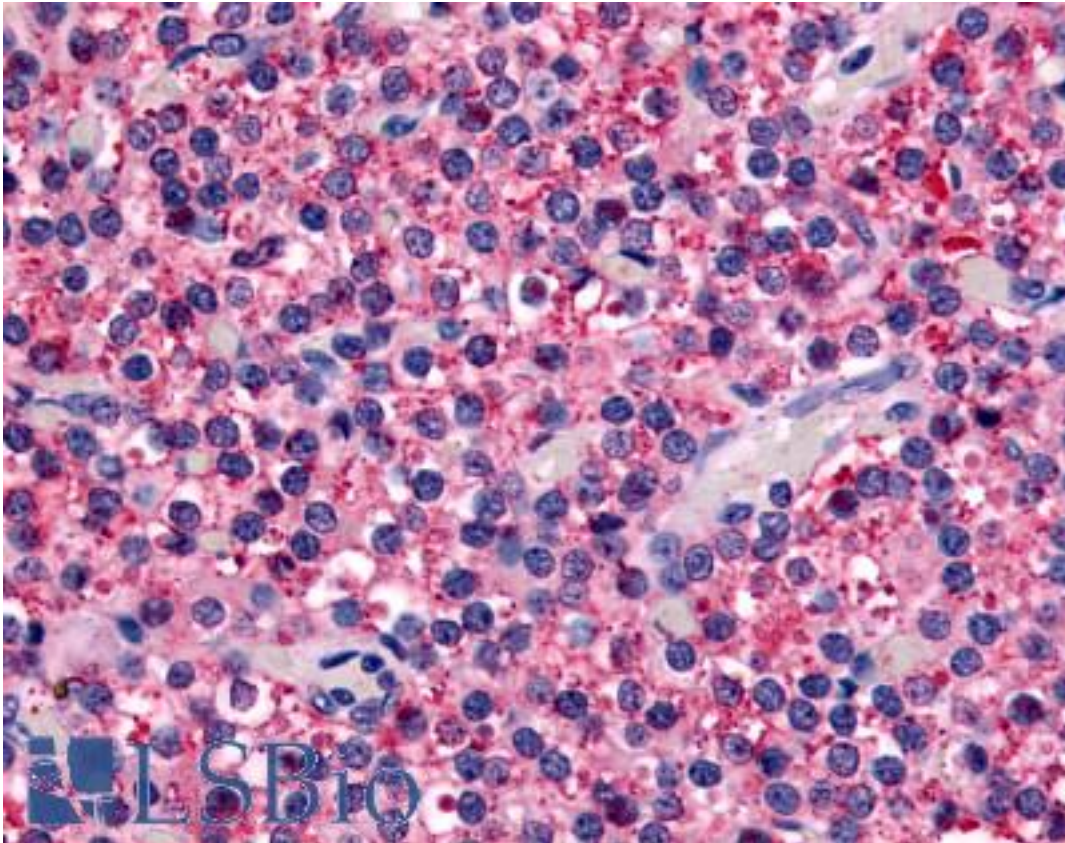


CASR/Calcium Sensing Receptor Rabbit anti-Human Polyclonal (N-Terminus) Antibody - LS-A1426 - LSBio	
CatalogID:	LS-A1426
Target:	calcium-sensing receptor (CASR)
Synonyms:	CASR Antibody, Ca sensing receptor Antibody, Ca ²⁺ sensing receptor Antibody, Calcium-sensing receptor Antibody, FIH Antibody, EIG8 Antibody, GPRC2A Antibody, HHC Antibody, HHC1 Antibody, Hypocalciuric hypercalcemia 1 Antibody, PCAR1 Antibody, NSHPT Antibody, CAR Antibody, FHH Antibody
Family / Subfamily:	GPCR / Calcium-sensing
Host	CASR antibody was produced in Rabbit
Clonality:	Polyclonal
Immunogen Species:	CASR/Calcium Sensing Receptor antibody was raised against Human
Antigen Type:	Synthetic peptide
Immunogen:	CASR/Calcium Sensing Receptor antibody was raised against synthetic 18 amino acid peptide from N-terminal extracellular domain of human CASR. Percent identity with other species by BLAST analysis: Human, Gorilla, Gibbon, Monkey, Bovine (100%); Marmoset, Rat, Bat, Horse, Rabbit (94%); Mouse, Dog, Hamster, Pig (89%); Elephant, Panda (83%).
Specificity:	Human CASR. BLAST analysis of the peptide immunogen showed no homology with other human proteins.
Epitope:	N-Terminus
Reactivity:	Human, Gorilla, Gibbon, Bovine
Predicted Reactivity:	Monkey, Rat, Bat, Horse, Rabbit
Purification:	Immunoaffinity purified
Presentation:	PBS, 0.1% sodium azide.
Recommended Storage:	Long term: -70°C; Short term: +4°C
Uses:	IHC - Paraffin (6 - 15 µg/ml) (Optimal dilution to be determined by the researcher)
Size:	50 µg
Concentration:	1 mg/ml

Immunohistochemistry Image:



Anti-CASR antibody LS-A1426 IHC of human parathyroid. Immunohistochemistry of formalin-fixed, paraffin-embedded tissue after heat-induced antigen retrieval.

Requested From:

Japan

Laboratory Reagent For In Vitro Research Use Only

Not for resale without prior written consent from LifeSpan BioSciences, Inc.

Created on 9/23/2014

© 2014 LifeSpan BioSciences