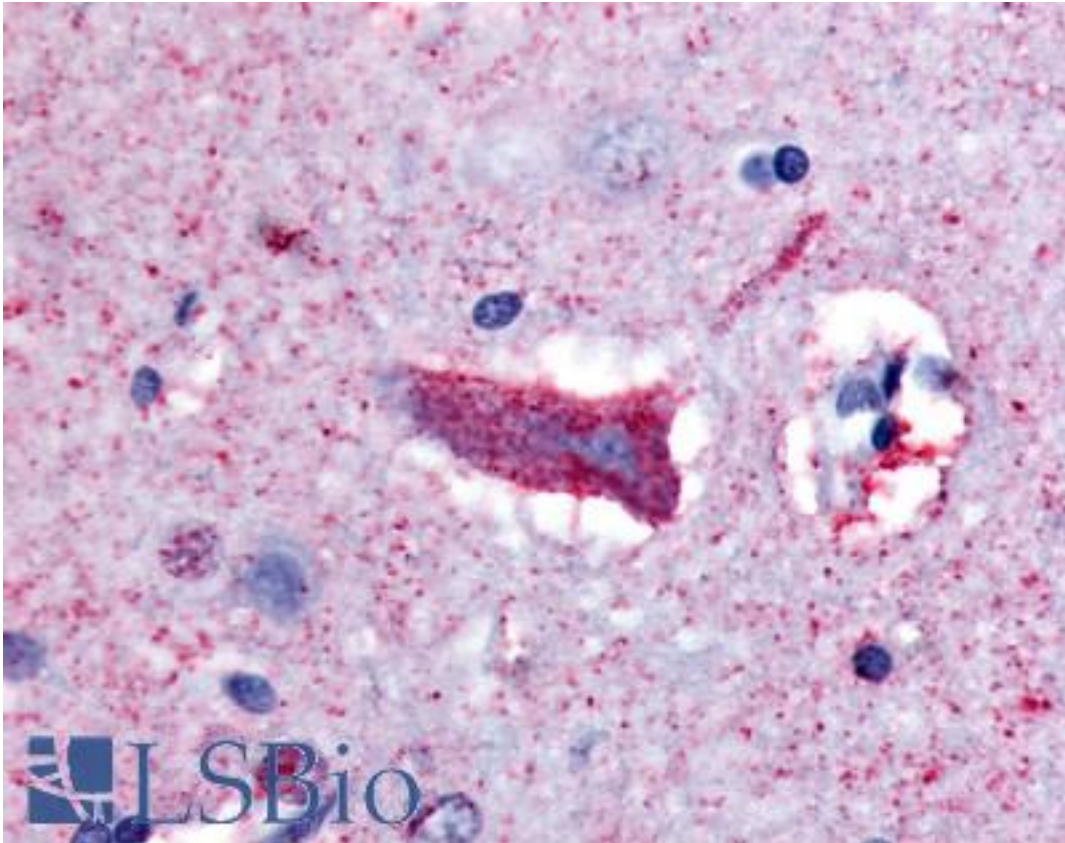


CHRM3 / M3 Rabbit anti-Human Polyclonal (Cytoplasmic Domain) Antibody - LS-A1422 - LSBio	
<b>CatalogID:</b>	LS-A1422
<b>Target:</b>	cholinergic receptor, muscarinic 3 (CHRM3)
<b>Synonyms:</b>	CHRM3 Antibody, M3 Antibody, Muscarinic receptor M3 Antibody, Muscarinic M3 receptor Antibody, EGBRS Antibody, HM3 Antibody, M3 muscarinic receptor Antibody
<b>Family / Subfamily:</b>	GPCR / Acetylcholine
<b>Host</b>	CHRM3 antibody was produced in Rabbit
<b>Clonality:</b>	Polyclonal
<b>Immunogen Species:</b>	CHRM3 / M3 antibody was raised against Human
<b>Antigen Type:</b>	Synthetic peptide
<b>Immunogen:</b>	CHRM3 / M3 antibody was raised against synthetic 20 amino acid peptide from 3rd cytoplasmic domain of human CHRM3 / M3. Percent identity with other species by BLAST analysis: Human, Chimpanzee, Gorilla, Orangutan, Gibbon, Monkey, Marmoset (100%); Mouse, Rat, Sheep, Bovine, Hamster, Elephant, Horse, Rabbit, Pig (95%); Dog, Opossum (90%); Lizard (85%); Panda, Guinea pig (80%).
<b>Specificity:</b>	Human CHRM3 / M3. BLAST analysis of the peptide immunogen showed no homology with other human proteins.
<b>Epitope:</b>	Cytoplasmic Domain
<b>Reactivity:</b>	Human, Chimpanzee, Gorilla, Orangutan, Gibbon, Monkey
<b>Predicted Reactivity:</b>	Mouse, Rat, Bovine, Dog, Hamster, Horse, Pig, Rabbit, Sheep
<b>Purification:</b>	Immunoaffinity purified
<b>Presentation:</b>	PBS, 0.1% sodium azide.
<b>Recommended Storage:</b>	Long term: -70°C; Short term: +4°C
<b>Usage Summary:</b>	Immunohistochemistry: LS-A1422 was validated for use in immunohistochemistry on a panel of 21 formalin-fixed, paraffin-embedded (FFPE) human tissues after heat induced antigen retrieval in pH 6.0 citrate buffer. After incubation with the primary antibody, slides were incubated with biotinylated secondary antibody, followed by alkaline phosphatase-streptavidin and chromogen. The stained slides were evaluated by a pathologist to confirm staining specificity. The optimal working concentration for LS-A1422 was determined to be 10 ug/ml.
<b>Uses:</b>	IHC - Paraffin (10 µg/ml), ELISA (Optimal dilution to be determined by the researcher)
<b>Size:</b>	50 µg
<b>Concentration:</b>	1 mg/ml

**Immunohistochemistry Image:**



Anti-CHRM3 / M3 antibody LS-A1422 IHC of human brain, cortex. Immunohistochemistry of formalin-fixed, paraffin-embedded tissue after heat-induced antigen retrieval.

**Requested From:**

Japan

Laboratory Reagent For In Vitro Research Use Only

Not for resale without prior written consent from LifeSpan BioSciences, Inc.

Created on 9/23/2014

© 2014 LifeSpan BioSciences