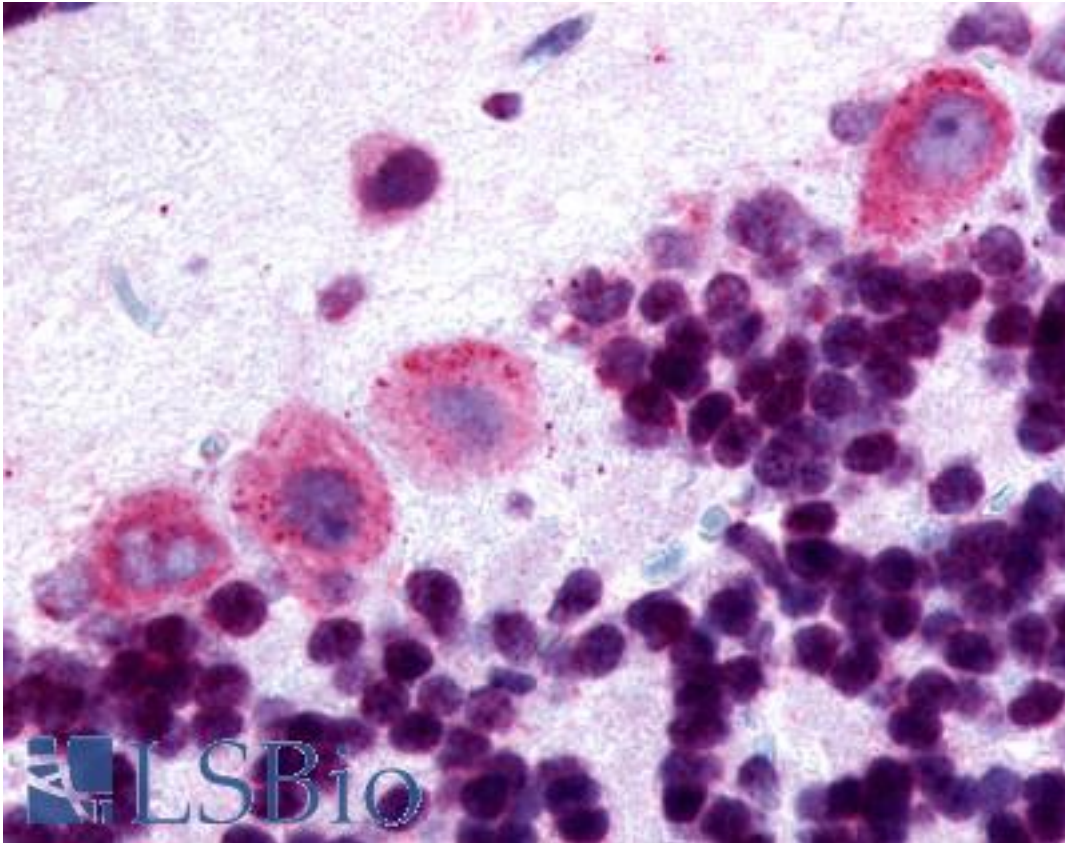


DRD5 / Dopamine Receptor D5 Rabbit anti-Human Polyclonal (Cytoplasmic Domain) Antibody - LS-A1408 - LSBio	
CatalogID:	LS-A1408
Target:	dopamine receptor D5 (DRD5)
Synonyms:	DRD5 Antibody, D(5) dopamine receptor Antibody, D1beta dopamine receptor Antibody, D5 dopamine receptor Antibody, Dopamine 5 receptor Antibody, Dopamine receptor D5 Antibody, DRD1B Antibody, D(1B) dopamine receptor Antibody, D1b dopamine receptor Antibody, D1b receptor Antibody, DBDR Antibody, Dopamine receptor 5 Antibody, DRD1L2 Antibody, Hd5dr Antibody, Dopamine d1b receptor Antibody, Dopamine D5 receptor Antibody, Dopamine receptor D1B Antibody
Family / Subfamily:	GPCR / Dopamine
Host	DRD5 antibody was produced in Rabbit
Clonality:	Polyclonal
Immunogen Species:	DRD5 / Dopamine Receptor D5 antibody was raised against Human
Antigen Type:	Synthetic peptide
Immunogen:	DRD5 / Dopamine Receptor D5 antibody was raised against synthetic 16 amino acid peptide from 3rd cytoplasmic domain of human DRD5 / Dopamine Receptor D5. Percent identity with other species by BLAST analysis: Human, Gorilla, Gibbon, Monkey, Dog (100%); Marmoset, Panda, Horse (94%); Mouse, Bovine, Hamster, Elephant, Pig (88%); Rat, Rabbit (81%).
Specificity:	Human DRD5 / Dopamine Receptor D5. BLAST analysis of the peptide immunogen showed no homology with other human proteins.
Epitope:	Cytoplasmic Domain
Reactivity:	Human, Gorilla, Gibbon, Dog
Predicted Reactivity:	Monkey, Horse
Purification:	Immunoaffinity purified
Presentation:	PBS, 0.1% sodium azide.
Recommended Storage:	Long term: -70°C; Short term: +4°C
Uses:	IHC - Paraffin (20 µg/ml) (Optimal dilution to be determined by the researcher)
Size:	50 µg
Concentration:	1 mg/ml

Immunohistochemistry Image:



Anti-DRD5 / Dopamine Receptor D5 antibody LS-A1408 IHC of human brain, cerebellum. Immunohistochemistry of formalin-fixed, paraffin-embedded tissue after heat-induced antigen retrieval.

Requested From:

Japan

Laboratory Reagent For In Vitro Research Use Only

Not for resale without prior written consent from LifeSpan BioSciences, Inc.

Created on 9/23/2014

© 2014 LifeSpan BioSciences