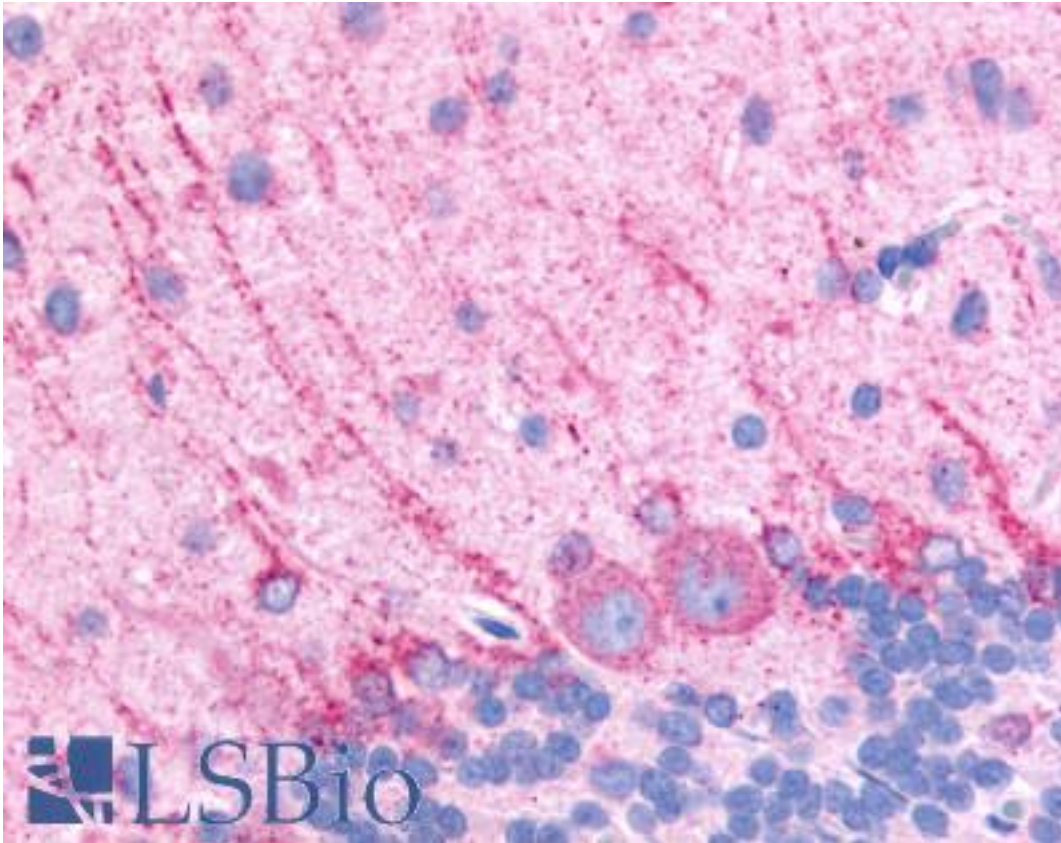


DRD5 / Dopamine Receptor D5 Rabbit anti-Human Polyclonal (Extracellular Domain) Antibody - LS-A1407 - LSBio	
<b>CatalogID:</b>	LS-A1407
<b>Target:</b>	dopamine receptor D5 (DRD5)
<b>Synonyms:</b>	DRD5 Antibody, D(5) dopamine receptor Antibody, D1beta dopamine receptor Antibody, D5 dopamine receptor Antibody, Dopamine 5 receptor Antibody, Dopamine receptor D5 Antibody, DRD1B Antibody, D(1B) dopamine receptor Antibody, D1b dopamine receptor Antibody, D1b receptor Antibody, DBDR Antibody, Dopamine receptor 5 Antibody, DRD1L2 Antibody, Hd5dr Antibody, Dopamine d1b receptor Antibody, Dopamine D5 receptor Antibody, Dopamine receptor D1B Antibody
<b>Family / Subfamily:</b>	GPCR / Dopamine
<b>Host</b>	DRD5 antibody was produced in Rabbit
<b>Clonality:</b>	Polyclonal
<b>Immunogen Species:</b>	DRD5 / Dopamine Receptor D5 antibody was raised against Human
<b>Antigen Type:</b>	Synthetic peptide
<b>Immunogen:</b>	DRD5 / Dopamine Receptor D5 antibody was raised against synthetic 16 amino acid peptide from 3rd extracellular domain of human DRD5 / Dopamine Receptor D5. Percent identity with other species by BLAST analysis: Human (100%); Gorilla (94%); Gibbon, Monkey (88%); Marmoset (81%).
<b>Specificity:</b>	Human DRD5 / Dopamine Receptor D5. BLAST analysis of the peptide immunogen showed no homology with other human proteins.
<b>Epitope:</b>	Extracellular Domain
<b>Reactivity:</b>	Human, Rat
<b>Predicted Reactivity:</b>	Gorilla
<b>Purification:</b>	Immunoaffinity purified
<b>Presentation:</b>	PBS, 0.1% sodium azide.
<b>Recommended Storage:</b>	Long term: -70°C; Short term: +4°C
<b>Uses:</b>	IHC - Paraffin (3.4 µg/ml) (Optimal dilution to be determined by the researcher)
<b>Size:</b>	50 µg
<b>Concentration:</b>	1 mg/ml

**Immunohistochemistry Image:**



Anti-DRD5 / Dopamine Receptor D5 antibody LS-A1407 IHC of rat brain, Purkinje neurons. Immunohistochemistry of formalin-fixed, paraffin-embedded tissue after heat-induced antigen retrieval.

**Requested From:**

Japan

Laboratory Reagent For In Vitro Research Use Only

Not for resale without prior written consent from LifeSpan BioSciences, Inc.

Created on 9/23/2014

© 2014 LifeSpan BioSciences