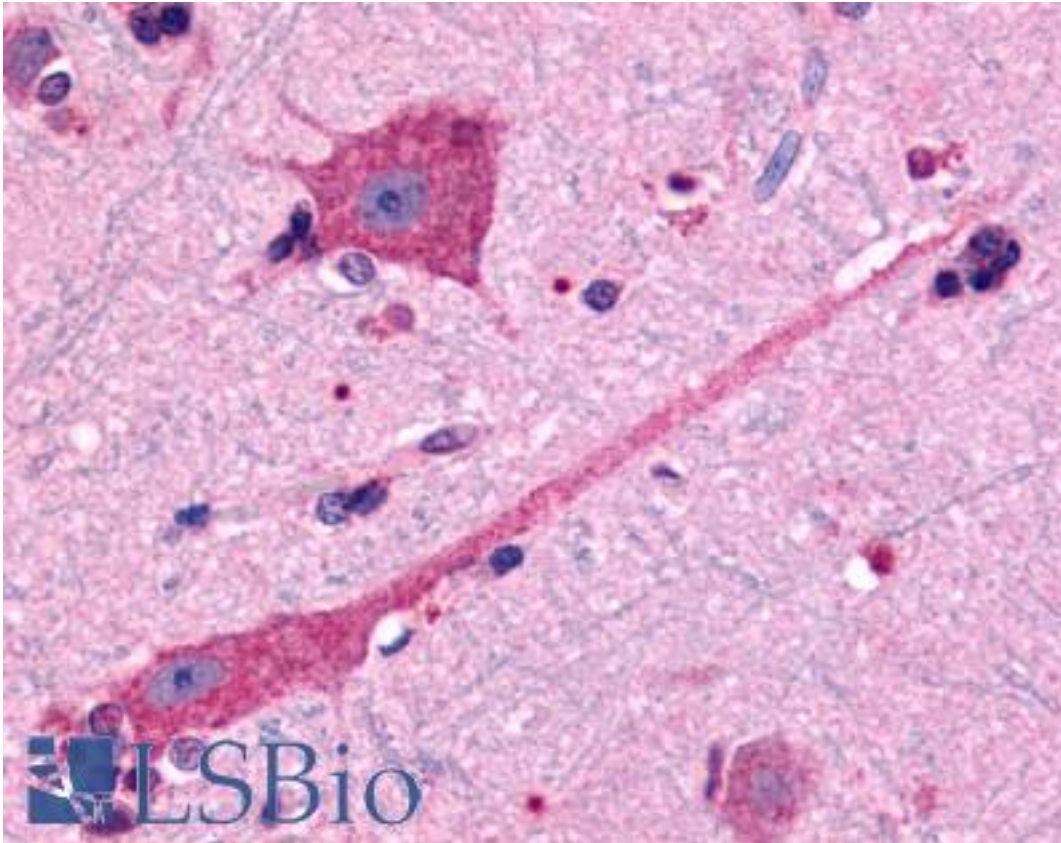


DRD2 / Dopamine Receptor D2 Rabbit anti-Human Polyclonal (Cytoplasmic Domain) Antibody - LS-A1405 - LSBio	
<b>CatalogID:</b>	LS-A1405
<b>Target:</b>	dopamine receptor D2 (DRD2)
<b>Synonyms:</b>	DRD2 Antibody, D2 dopamine receptor Antibody, D2R Antibody, Dopamine receptor D2 isoform Antibody, Dopamine 2 receptor Antibody, D(2) dopamine receptor Antibody, D2DR Antibody, Dopamine D2 receptor Antibody, Dopamine receptor D2 Antibody
<b>Family / Subfamily:</b>	GPCR / Dopamine
<b>Host</b>	DRD2 antibody was produced in Rabbit
<b>Clonality:</b>	Polyclonal
<b>Immunogen Species:</b>	DRD2 / Dopamine Receptor D2 antibody was raised against Human
<b>Antigen Type:</b>	Synthetic peptide
<b>Immunogen:</b>	DRD2 / Dopamine Receptor D2 antibody was raised against synthetic 16 amino acid peptide from 3rd cytoplasmic domain of human DRD2. Percent identity with other species by BLAST analysis: Human, Chimpanzee, Gorilla, Ferret, Bat, Bovine, Dog, Elephant, Panda, Horse, Rabbit (100%); Gibbon, Monkey, Pig (94%); Marmoset (81%).
<b>Specificity:</b>	Human DRD2. BLAST analysis of the peptide immunogen showed no homology with other human proteins.
<b>Epitope:</b>	Cytoplasmic Domain
<b>Reactivity:</b>	Human, Chimpanzee, Gorilla, Bat, Bovine, Dog, Horse, Rabbit
<b>Predicted Reactivity:</b>	Gibbon, Monkey, Pig
<b>Purification:</b>	Immunoaffinity purified
<b>Presentation:</b>	PBS, 0.1% sodium azide.
<b>Recommended Storage:</b>	Long term: -70°C; Short term: +4°C
<b>Uses:</b>	IHC - Paraffin (10 µg/ml) (Optimal dilution to be determined by the researcher)
<b>Size:</b>	50 µg
<b>Concentration:</b>	1 mg/ml

**Immunohistochemistry Image:**



Anti-DRD2 antibody LS-A1405 IHC of human brain, neurons and glia. Immunohistochemistry of formalin-fixed, paraffin-embedded tissue after heat-induced antigen retrieval.

**Requested From:**

Japan

Laboratory Reagent For In Vitro Research Use Only

Not for resale without prior written consent from LifeSpan BioSciences, Inc.

Created on 9/23/2014

© 2014 LifeSpan BioSciences