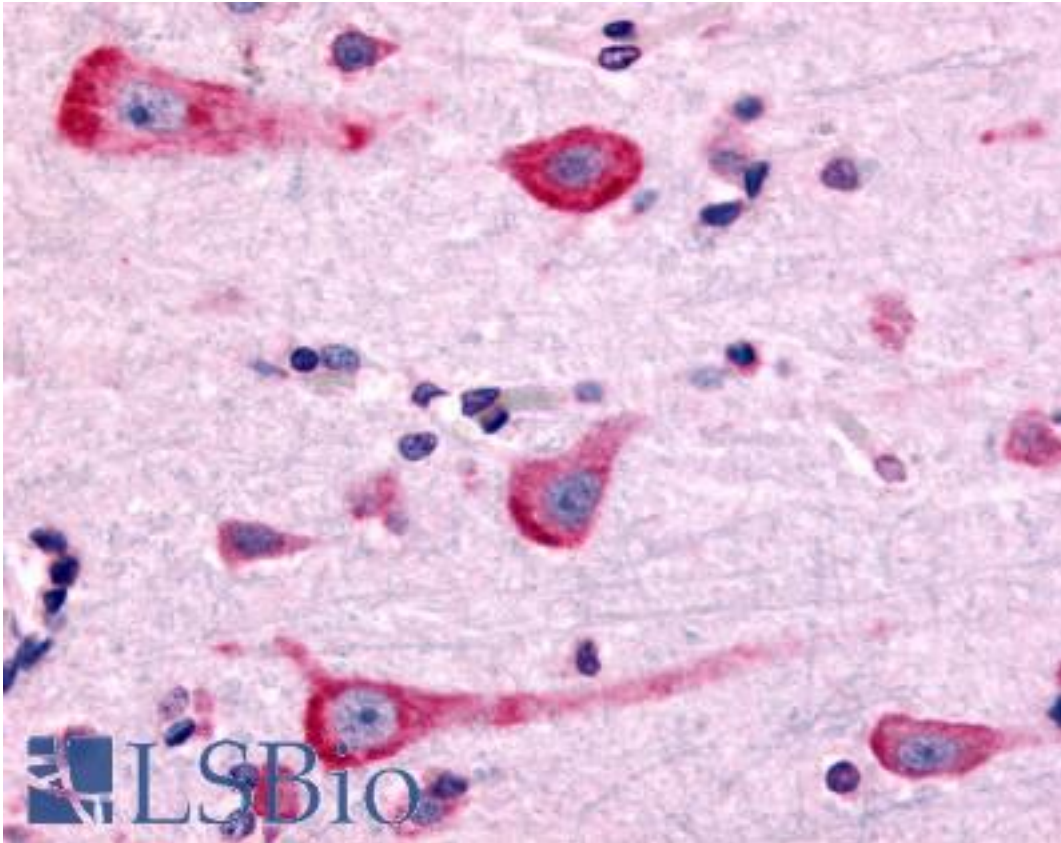


DRD2 / Dopamine Receptor D2 Rabbit anti-Human Polyclonal (Cytoplasmic Domain) Antibody - LS-A1403 - LSBio	
CatalogID:	LS-A1403
Target:	dopamine receptor D2 (DRD2)
Synonyms:	DRD2 Antibody, D2 dopamine receptor Antibody, D2R Antibody, Dopamine receptor D2 isoform Antibody, Dopamine 2 receptor Antibody, D(2) dopamine receptor Antibody, D2DR Antibody, Dopamine D2 receptor Antibody, Dopamine receptor D2 Antibody
Family / Subfamily:	GPCR / Dopamine
Host	DRD2 antibody was produced in Rabbit
Clonality:	Polyclonal
Immunogen Species:	DRD2 / Dopamine Receptor D2 antibody was raised against Human
Antigen Type:	Synthetic peptide
Immunogen:	DRD2 / Dopamine Receptor D2 antibody was raised against synthetic 19 amino acid peptide from 3rd cytoplasmic domain of human DRD2. Percent identity with other species by BLAST analysis: Human, Chimpanzee, Gorilla, Marmoset (100%); Gibbon, Monkey, Rabbit (95%); Dog, Bovine, Panda, Horse, Pig (89%); Mouse, Rat, Ferret, Bat, Hamster, Elephant (84%).
Specificity:	Human DRD2. BLAST analysis of the peptide immunogen showed no homology with other human proteins, except ZNF57 (42%).
Epitope:	Cytoplasmic Domain
Reactivity:	Human, Chimpanzee, Gorilla
Predicted Reactivity:	Gibbon, Monkey, Rabbit
Purification:	Immunoaffinity purified
Presentation:	PBS, 0.1% sodium azide.
Recommended Storage:	Long term: -70°C; Short term: +4°C
Uses:	IHC - Paraffin (5 - 10 µg/ml) (Optimal dilution to be determined by the researcher)
Size:	50 µg
Concentration:	1 mg/ml

Immunohistochemistry Image:



Anti-DRD2 antibody LS-A1403 IHC of human brain, neurons and glia. Immunohistochemistry of formalin-fixed, paraffin-embedded tissue after heat-induced antigen retrieval.

Requested From:

Japan

Laboratory Reagent For In Vitro Research Use Only

Not for resale without prior written consent from LifeSpan BioSciences, Inc.

Created on 9/23/2014

© 2014 LifeSpan BioSciences