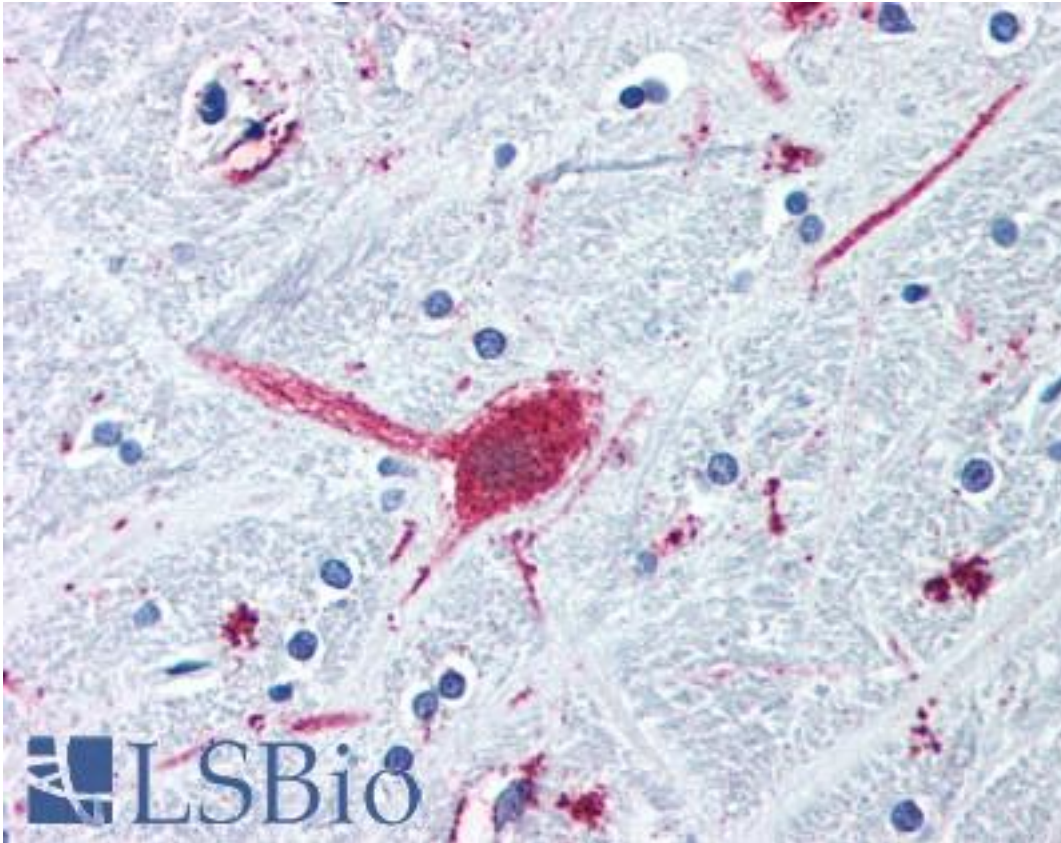


DRD3 / Dopamine Receptor D3 Rabbit anti-Human Polyclonal (Cytoplasmic Domain) Antibody - LS-A1402 - LSBio	
CatalogID:	LS-A1402
Target:	dopamine receptor D3 (DRD3)
Synonyms:	DRD3 Antibody, D3 dopamine receptor Antibody, D3DR Antibody, Dopamine 3 receptor Antibody, Dopamine receptor D3 Antibody, D3nf Antibody, Essential tremor 1 Antibody, ETM1 Antibody, FET1 Antibody, D(3) dopamine receptor Antibody, Dopamine D3 receptor Antibody
Family / Subfamily:	GPCR / Dopamine
Host	DRD3 antibody was produced in Rabbit
Clonality:	Polyclonal
Immunogen Species:	DRD3 / Dopamine Receptor D3 antibody was raised against Human
Antigen Type:	Synthetic peptide
Immunogen:	DRD3 / Dopamine Receptor D3 antibody was raised against synthetic 18 amino acid peptide from 3rd cytoplasmic domain of human DRD3 / Dopamine Receptor D3. Percent identity with other species by BLAST analysis: Human, Chimpanzee, Gibbon, Monkey, Marmoset, Mouse, Dog, Bat, Hamster, Panda, Horse, Pig (100%); Rat, Rabbit (94%); Elephant (89%).
Specificity:	Human DRD3 / Dopamine Receptor D3. BLAST analysis of the peptide immunogen showed no homology with other human proteins.
Epitope:	Cytoplasmic Domain
Reactivity:	Human, Chimpanzee, Gibbon, Monkey, Mouse, Bat, Dog, Hamster, Horse, Pig
Predicted Reactivity:	Rat, Rabbit
Purification:	Immunoaffinity purified
Presentation:	PBS, 0.1% sodium azide.
Recommended Storage:	Long term: -70°C; Short term: +4°C
Uses:	IHC - Paraffin (16 - 32 µg/ml) (Optimal dilution to be determined by the researcher)
Size:	50 µg
Concentration:	1 mg/ml

Immunohistochemistry Image:



Anti-DRD3 / Dopamine Receptor D3 antibody LS-A1402 IHC of human brain, globus pallidus. Immunohistochemistry of formalin-fixed, paraffin-embedded tissue after heat-induced antigen retrieval.

Requested From:

Japan

Laboratory Reagent For In Vitro Research Use Only

Not for resale without prior written consent from LifeSpan BioSciences, Inc.

Created on 9/23/2014

© 2014 LifeSpan BioSciences