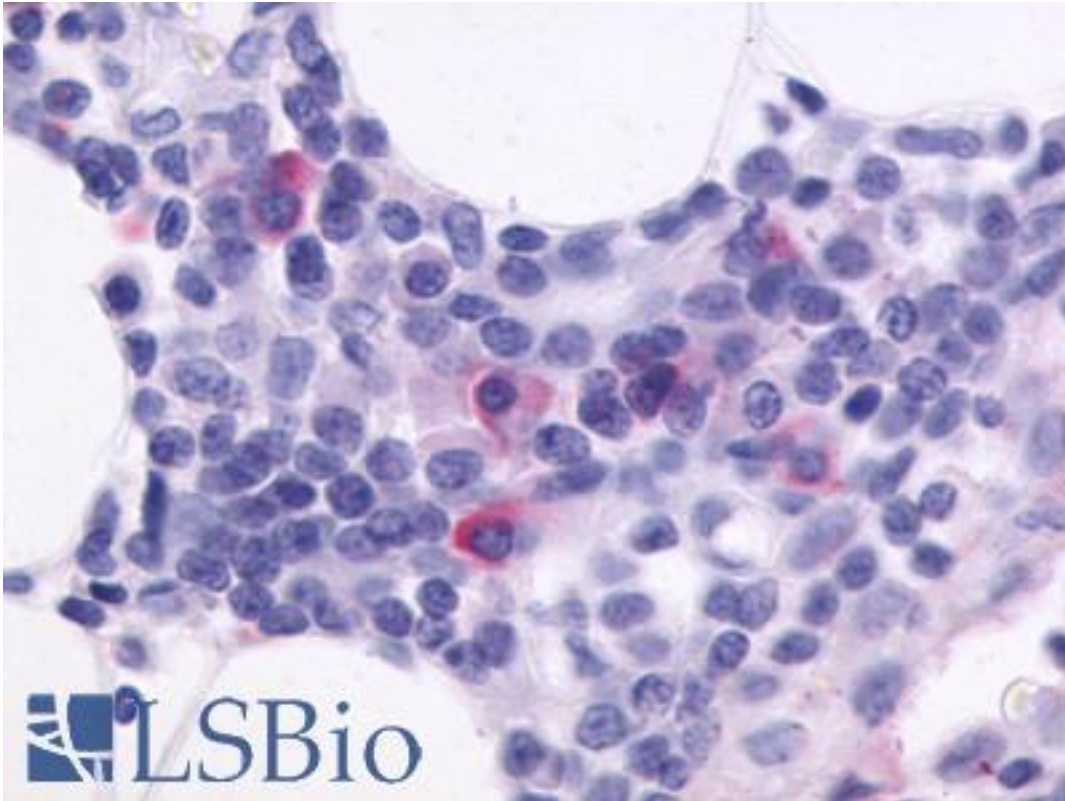


CXCR5 Rabbit anti-Human Polyclonal (C-Terminus) Antibody - LS-A1385 - LSBio

| | |
|------------------------------|--|
| CatalogID: | LS-A1385 |
| Target: | chemokine (C-X-C motif) receptor 5 (CXCR5) |
| Synonyms: | CXCR5 Antibody, CD185 antigen Antibody, CD185 Antibody, CXCR-5 Antibody, CXC-R5 Antibody, GPR9 Antibody, MDR15 Antibody, Monocyte-derived receptor 15 Antibody, Blr-1 Antibody, BLR1 Antibody, Burkitt lymphoma receptor 1 Antibody, Burkitt's lymphoma receptor 1 Antibody, MDR-15 Antibody |
| Family / Subfamily: | GPCR / Chemokine |
| Host | CXCR5 antibody was produced in Rabbit |
| Clonality: | Polyclonal |
| Immunogen Species: | CXCR5 antibody was raised against Human |
| Antigen Type: | Synthetic peptide |
| Immunogen: | CXCR5 antibody was raised against synthetic 18 amino acid peptide from C-terminus of human CXCR5. Percent identity with other species by BLAST analysis: Human, Gorilla (100%); Monkey, Hamster (94%); Gibbon, Mouse, Rat, Dog, Bovine, Panda, Pig (89%). |
| Specificity: | Human CXCR5. BLAST analysis of the peptide immunogen showed no homology with other human proteins, except NAAA (67%). |
| Epitope: | C-Terminus |
| Reactivity: | Human, Gorilla |
| Predicted Reactivity: | Monkey, Hamster |
| Purification: | Immunoaffinity purified |
| Presentation: | PBS, 0.1% sodium azide. |
| Recommended Storage: | Long term: -70°C; Short term: +4°C |
| Uses: | IHC - Paraffin (5 µg/ml) (Optimal dilution to be determined by the researcher) |
| Size: | 50 µg |
| Concentration: | 1 mg/ml |

Immunohistochemistry Image:



Anti-CXCR5 antibody LS-A1385 IHC of human spleen. Immunohistochemistry of formalin-fixed, paraffin-embedded tissue after heat-induced antigen retrieval.

Requested From:

Japan

Laboratory Reagent For In Vitro Research Use Only

Not for resale without prior written consent from LifeSpan BioSciences, Inc.

Created on 9/23/2014

© 2014 LifeSpan BioSciences