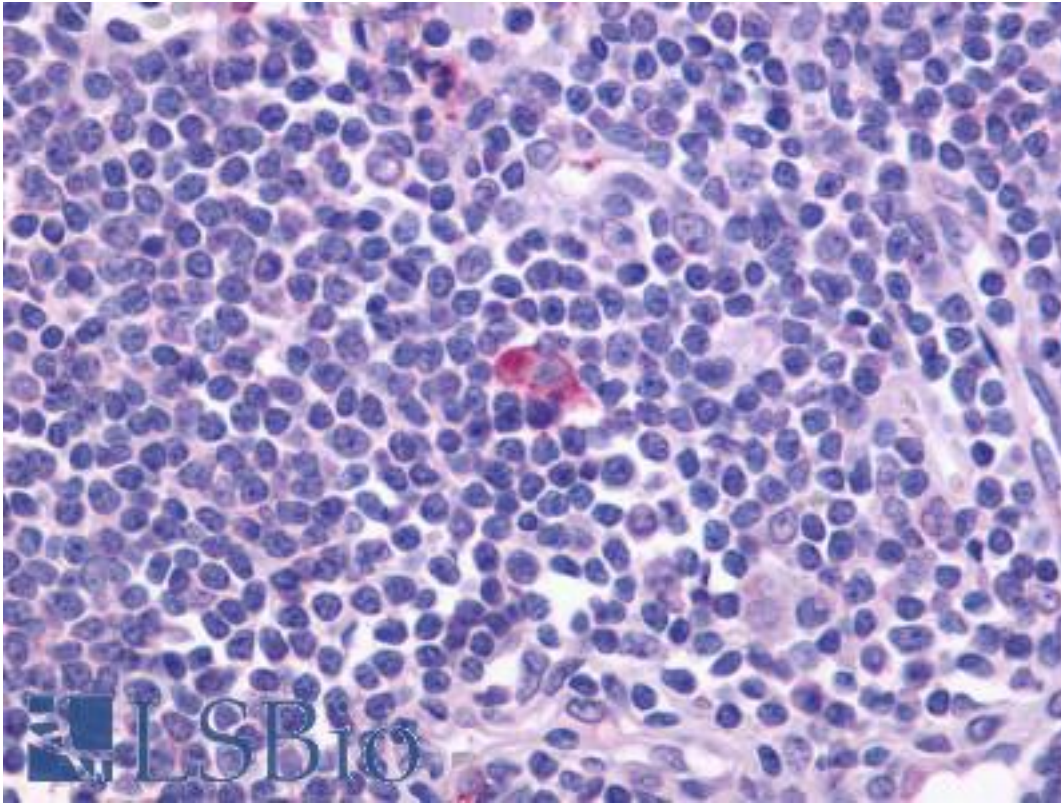


**CXCR5 Rabbit anti-Human Polyclonal (Cytoplasmic Domain) Antibody - LS-A1384 - LSBio**

<b>CatalogID:</b>	LS-A1384
<b>Target:</b>	chemokine (C-X-C motif) receptor 5 (CXCR5)
<b>Synonyms:</b>	CXCR5 Antibody, CD185 antigen Antibody, CD185 Antibody, CXCR-5 Antibody, CXC-R5 Antibody, GPR9 Antibody, MDR15 Antibody, Monocyte-derived receptor 15 Antibody, Blr-1 Antibody, BLR1 Antibody, Burkitt lymphoma receptor 1 Antibody, Burkitt's lymphoma receptor 1 Antibody, MDR-15 Antibody
<b>Family / Subfamily:</b>	GPCR / Chemokine
<b>Host</b>	CXCR5 antibody was produced in Rabbit
<b>Clonality:</b>	Polyclonal
<b>Immunogen Species:</b>	CXCR5 antibody was raised against Human
<b>Antigen Type:</b>	Synthetic peptide
<b>Immunogen:</b>	CXCR5 antibody was raised against synthetic 16 amino acid peptide from 3rd cytoplasmic domain of human CXCR5. Percent identity with other species by BLAST analysis: Human, Gorilla, Gibbon, Monkey (100%); Mouse, Rat, Dog, Bovine, Hamster, Panda, Rabbit, Pig (94%).
<b>Specificity:</b>	Human CXCR5. BLAST analysis of the peptide immunogen showed no homology with other human proteins, except MTA3 (50%).
<b>Epitope:</b>	Cytoplasmic Domain
<b>Reactivity:</b>	Human, Gorilla, Gibbon, Monkey
<b>Predicted Reactivity:</b>	Mouse, Rat, Bovine, Dog, Hamster, Pig, Rabbit
<b>Purification:</b>	Immunoaffinity purified
<b>Presentation:</b>	PBS, 0.1% sodium azide.
<b>Recommended Storage:</b>	Long term: -70°C; Short term: +4°C
<b>Uses:</b>	IHC - Paraffin (5 - 18 µg/ml) (Optimal dilution to be determined by the researcher)
<b>Size:</b>	50 µg
<b>Concentration:</b>	1 mg/ml

**Immunohistochemistry Image:**



Anti-CXCR5 antibody LS-A1384 IHC of human spleen. Immunohistochemistry of formalin-fixed, paraffin-embedded tissue after heat-induced antigen retrieval.

**Requested From:**

Japan

Laboratory Reagent For In Vitro Research Use Only

Not for resale without prior written consent from LifeSpan BioSciences, Inc.

Created on 9/23/2014

© 2014 LifeSpan BioSciences