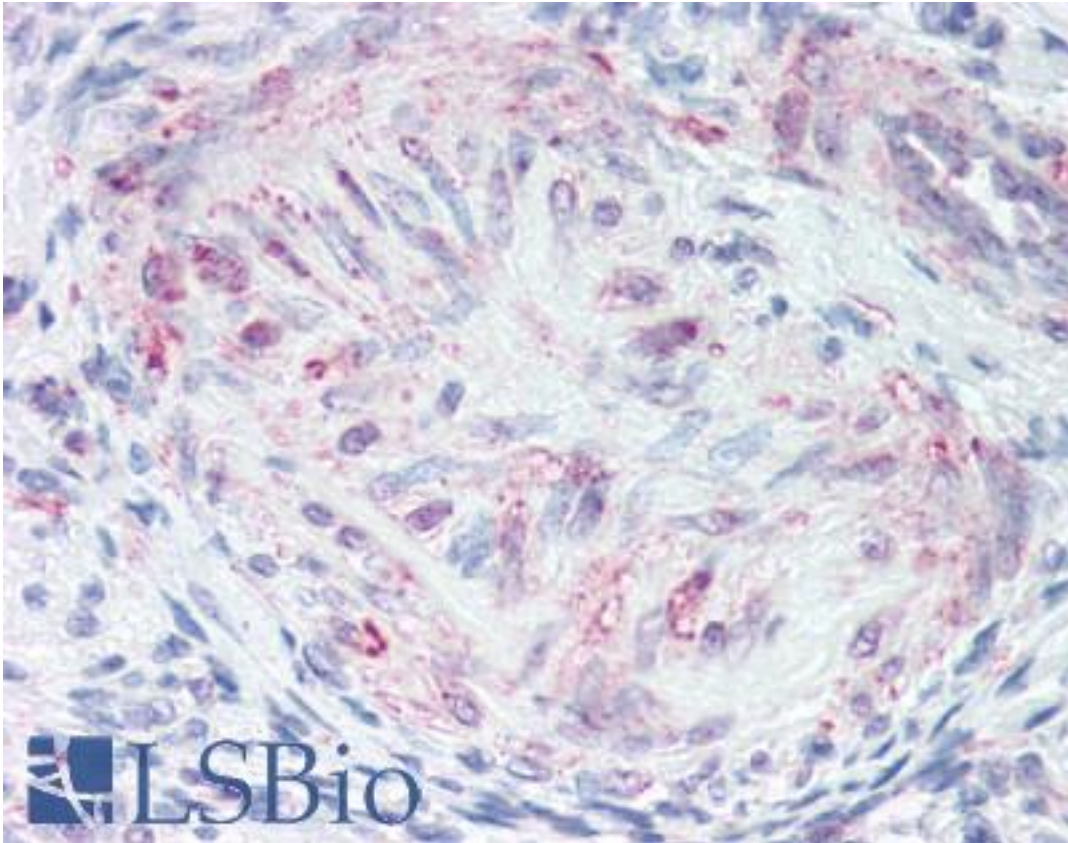


MLNR/GPR38/Motilin Receptor Rabbit anti-Human Polyclonal (C-Terminus) Antibody - LS-A136 - LSBio	
CatalogID:	LS-A136
Target:	motilin receptor (MLNR)
Synonyms:	MLNR Antibody, G-protein coupled receptor 38 Antibody, Motilin receptor Antibody, MTLR Antibody, MTLR1 Antibody, G protein-coupled receptor 38 Antibody, GPR38 Antibody
Family / Subfamily:	GPCR / Motilin
Host	MLNR antibody was produced in Rabbit
Clonality:	Polyclonal
Immunogen Species:	MLNR/GPR38/Motilin Receptor antibody was raised against Human
Antigen Type:	Synthetic peptide
Immunogen:	MLNR/GPR38/Motilin Receptor antibody was raised against synthetic 16 amino acid peptide from C-terminal cytoplasmic domain of human MLNR. Percent identity with other species by BLAST analysis: Human, Gorilla (100%); Marmoset (81%).
Specificity:	Human MLNR. BLAST analysis of the peptide immunogen showed no homology with other human proteins.
Epitope:	C-Terminus
Reactivity:	Human, Gorilla
Purification:	Immunoaffinity purified
Presentation:	PBS, 0.1% sodium azide.
Recommended Storage:	Long term: -70°C; Short term: +4°C
Uses:	IHC - Paraffin (10 µg/ml) (Optimal dilution to be determined by the researcher)
Size:	50 µg
Concentration:	0.5 mg/ml

Immunohistochemistry Image:



Anti-MLNR antibody LS-A136 IHC of human uterus, vessel. Immunohistochemistry of formalin-fixed, paraffin-embedded tissue after heat-induced antigen retrieval.

Requested From:

Japan

Laboratory Reagent For In Vitro Research Use Only

Not for resale without prior written consent from LifeSpan BioSciences, Inc.

Created on 9/23/2014

© 2014 LifeSpan BioSciences