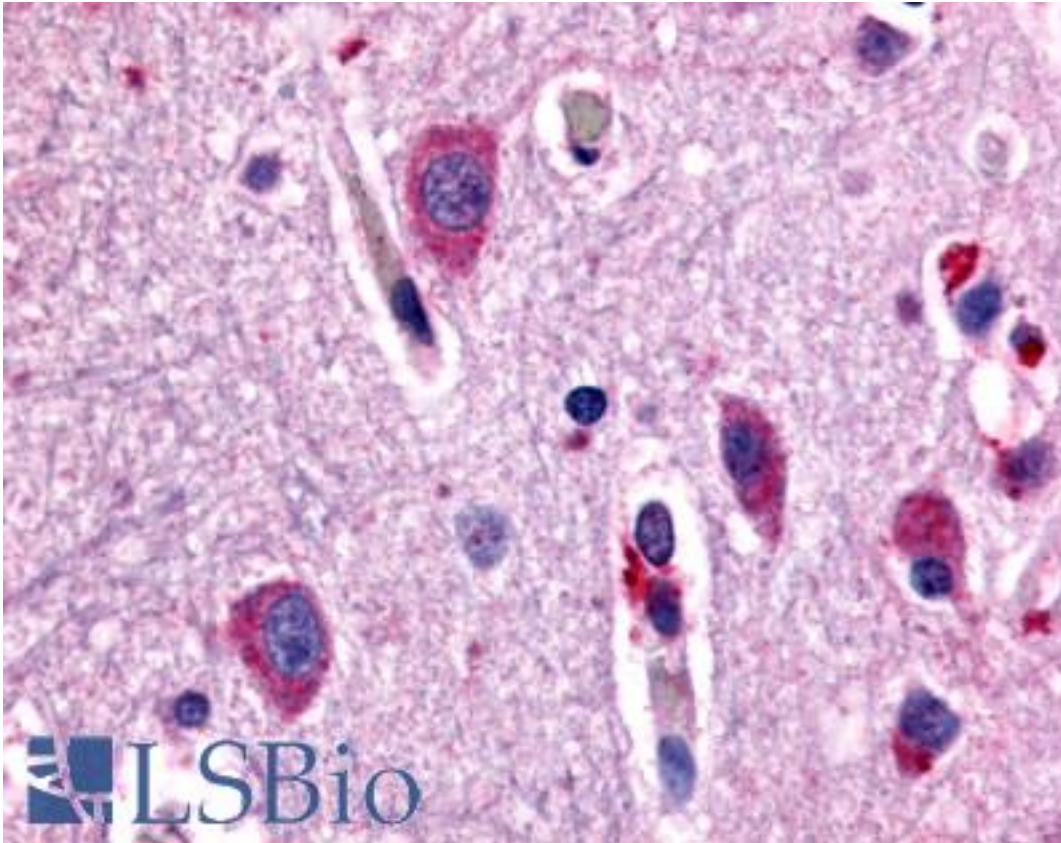


CHRM2 / M2 Rabbit anti-Human Polyclonal (Cytoplasmic Domain) Antibody - LS-A1330 - LSBio	
<b>CatalogID:</b>	LS-A1330
<b>Target:</b>	cholinergic receptor, muscarinic 2 (CHRM2)
<b>Synonyms:</b>	CHRM2 Antibody, 7TM receptor Antibody, HM2 Antibody, M2 muscarinic receptor Antibody, M2-mAChR Antibody, Muscarinic receptor M2 Antibody, Muscarinic M2 receptor Antibody
<b>Family / Subfamily:</b>	GPCR / Acetylcholine
<b>Host</b>	CHRM2 antibody was produced in Rabbit
<b>Clonality:</b>	Polyclonal
<b>Immunogen Species:</b>	CHRM2 / M2 antibody was raised against Human
<b>Antigen Type:</b>	Synthetic peptide
<b>Immunogen:</b>	CHRM2 / M2 antibody was raised against synthetic 19 amino acid peptide from 3rd cytoplasmic domain of human CHRM2. Percent identity with other species by BLAST analysis: Human, Chimpanzee, Gorilla, Orangutan, Gibbon (100%); Marmoset, Rat, Dog, Hamster, Elephant, Pig (95%); Mouse, Sheep, Bat, Bovine, Panda, Rabbit, Opossum (89%); Guinea pig (84%).
<b>Specificity:</b>	Human CHRM2. BLAST analysis of the peptide immunogen showed no homology with other human proteins.
<b>Epitope:</b>	Cytoplasmic Domain
<b>Reactivity:</b>	Human, Chimpanzee, Gorilla, Orangutan, Gibbon
<b>Predicted Reactivity:</b>	Monkey, Rat, Dog, Hamster, Pig
<b>Purification:</b>	Immunoaffinity purified
<b>Presentation:</b>	PBS, 0.1% sodium azide.
<b>Recommended Storage:</b>	Long term: -70°C; Short term: +4°C
<b>Uses:</b>	IHC - Paraffin (4 - 8 µg/ml) (Optimal dilution to be determined by the researcher)
<b>Size:</b>	50 µg
<b>Concentration:</b>	1 mg/ml

**Immunohistochemistry Image:**



Anti-CHRM2 antibody LS-A1330 IHC of human brain, neurons and glia.  
Immunohistochemistry of formalin-fixed, paraffin-embedded tissue after heat-induced antigen retrieval.

**Requested From:**

Japan

Laboratory Reagent For In Vitro Research Use Only

Not for resale without prior written consent from LifeSpan BioSciences, Inc.

Created on 9/23/2014

© 2014 LifeSpan BioSciences