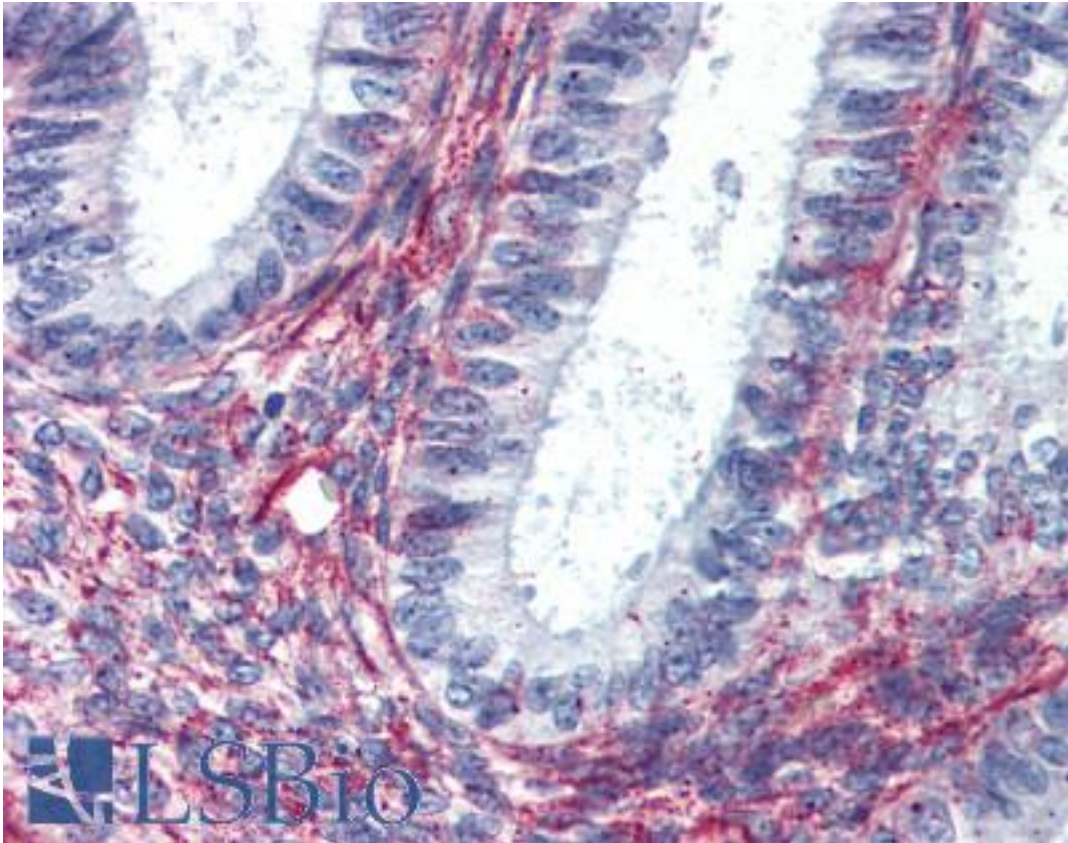


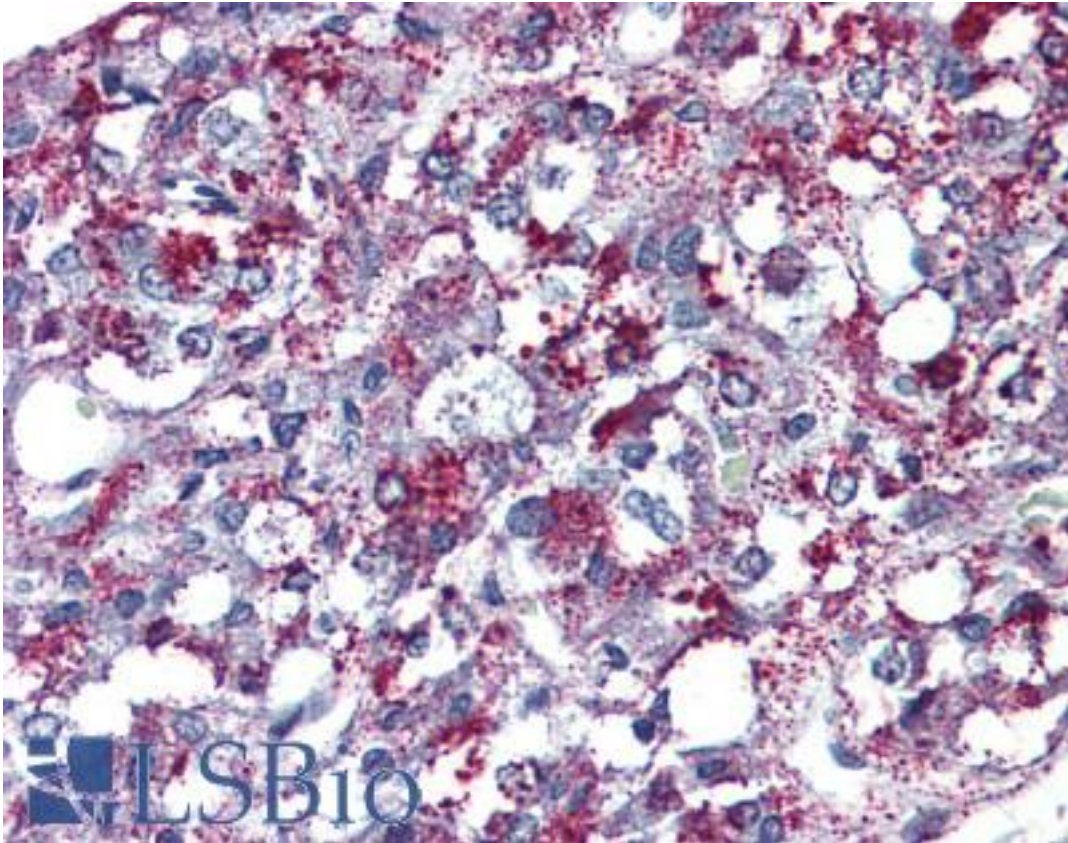
AGTR2 / AT2 Receptor Rabbit anti-Human Polyclonal (Internal) Antibody - LS-A1322 - LSBio	
CatalogID:	LS-A1322
Target:	angiotensin II receptor, type 2 (AGTR2)
Synonyms:	AGTR2 Antibody, Angiotensin ii receptor type 2 Antibody, Angiotensin II type-2 receptor Antibody, AT2 receptor Antibody, AT2 Antibody, At2r Antibody, MRX88 Antibody, Angiotensin ii at2 Antibody, Angiotensin receptor 2 Antibody, Type-2 angiotensin II receptor Antibody, ATGR2 Antibody
Family / Subfamily:	GPCR / Angiotensin
Host	AGTR2 antibody was produced in Rabbit
Clonality:	Polyclonal
Immunogen Species:	AGTR2 / AT2 Receptor antibody was raised against Human
Antigen Type:	Synthetic peptide
Immunogen:	AGTR2 / AT2 Receptor antibody was raised against synthetic 16 amino acid peptide from internal region of human AGTR2. Percent identity with other species by BLAST analysis: Human, Gorilla, Gibbon, Monkey, Marmoset, Mouse, Rat, Sheep, Dog, Bat, Bovine, Hamster, Elephant, Panda, Horse, Pig (100%).
Specificity:	Human AGTR2. BLAST analysis of the peptide immunogen showed no homology with other human proteins, except GPR65 (63%), NPFFR2 (44%).
Epitope:	Internal
Reactivity:	Human, Gorilla, Gibbon, Monkey, Mouse, Rat, Bat, Bovine, Dog, Hamster, Horse, Pig, Sheep
Purification:	Immunoaffinity purified
Presentation:	PBS, 0.1% sodium azide.
Recommended Storage:	Long term: -70°C; Short term: +4°C
Usage Summary:	Immunohistochemistry: LS-A1322 was validated for use in immunohistochemistry on a panel of 21 formalin-fixed, paraffin-embedded (FFPE) human tissues after proteinase K antigen retrieval. After incubation with the primary antibody, slides were incubated with biotinylated secondary antibody, followed by alkaline phosphatase-streptavidin and chromogen. The stained slides were evaluated by a pathologist to confirm staining specificity. The optimal working concentration for LS-A1322 was determined to be 10 ug/ml.
Uses:	IHC - Paraffin (10 µg/ml) (Optimal dilution to be determined by the researcher)
Size:	50 µg
Concentration:	1 mg/ml

Immunohistochemistry Image:



Anti-AGTR2 antibody LS-A1322 IHC of human uterus. Immunohistochemistry of formalin-fixed, paraffin-embedded tissue after heat-induced antigen retrieval.

Immunohistochemistry Image:



Anti-AGTR2 antibody LS-A1322 IHC of human adrenal. Immunohistochemistry of formalin-fixed, paraffin-embedded tissue after heat-induced antigen retrieval.

Requested From:

Japan

Laboratory Reagent For In Vitro Research Use Only

Not for resale without prior written consent from LifeSpan BioSciences, Inc.

Created on 9/23/2014

© 2014 LifeSpan BioSciences