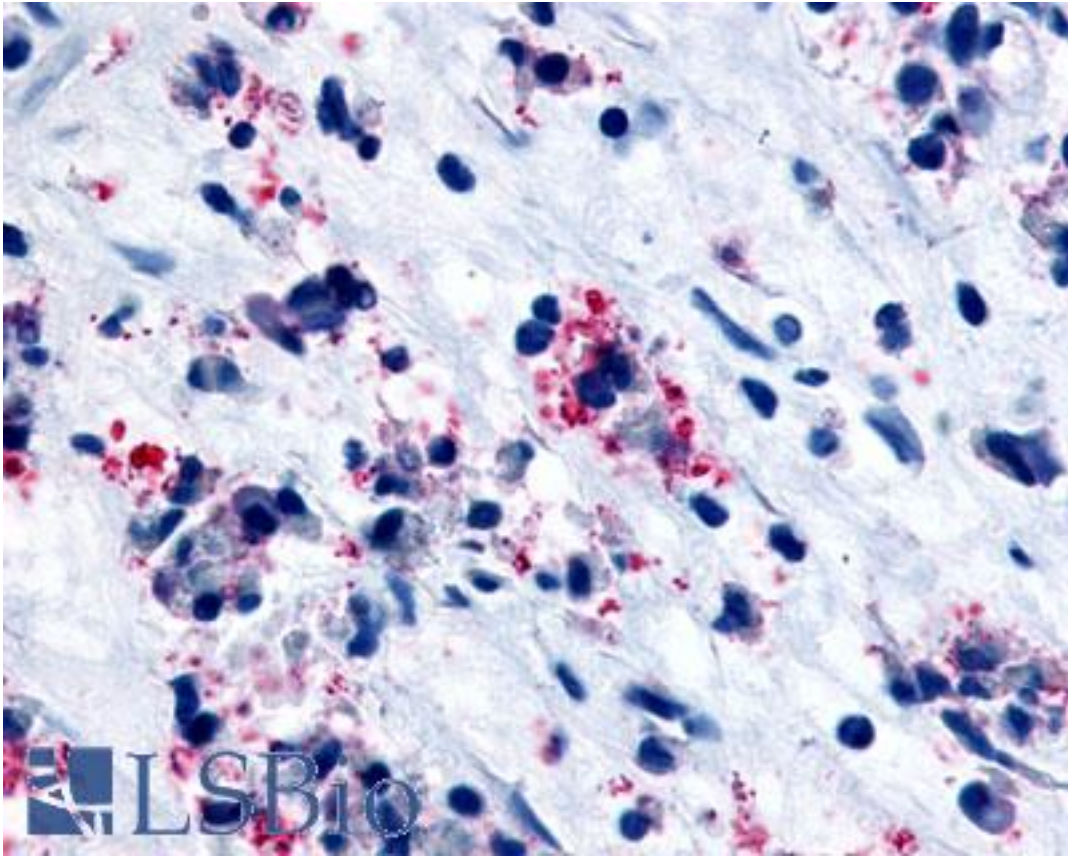


CYSLTR1 / CYSLT1 Rabbit anti-Human Polyclonal (C-Terminus) Antibody - LS-A1320 - LSBio

CatalogID:	LS-A1320
Target:	cysteinyl leukotriene receptor 1 (CYSLTR1)
Synonyms:	CYSLTR1 Antibody, Cys-LT1 receptor Antibody, CysLT(1) Antibody, Cys-leukotriene-1 receptor Antibody, CYSLT1 Antibody, CYSLT1R Antibody, CYSLTR Antibody, HG55 Antibody, LTD4 receptor Antibody, HMTMF81 Antibody, Cysteinyl It1 receptor Antibody
Family / Subfamily:	GPCR / Chemoattractant
Host	CYSLTR1 antibody was produced in Rabbit
Clonality:	Polyclonal
Immunogen Species:	CYSLTR1 / CYSLT1 antibody was raised against Human
Antigen Type:	Synthetic peptide
Immunogen:	CYSLTR1 / CYSLT1 antibody was raised against synthetic 20 amino acid peptide from C-terminus of human CYSLTR1 / CYSLT1. Percent identity with other species by BLAST analysis: Human, Gorilla (100%); Monkey, Marmoset (95%); Gibbon, Mouse, Panda (90%); Rat, Bovine, Elephant, Rabbit, Pig (85%).
Specificity:	Human CYSLTR1 / CYSLT1. BLAST analysis of the peptide immunogen showed no homology with other human proteins, except BRCA1 (45%).
Epitope:	C-Terminus
Reactivity:	Human, Gorilla
Predicted Reactivity:	Gibbon, Monkey, Mouse
Purification:	Immunoaffinity purified
Presentation:	PBS, 0.1% sodium azide.
Recommended Storage:	Long term: -70°C; Short term: +4°C
Uses:	IHC - Paraffin (9 - 22 µg/ml) (Optimal dilution to be determined by the researcher)
Size:	50 µg
Concentration:	1 mg/ml

Immunohistochemistry Image:



Anti-CYSLTR1 / CYSLT1 antibody LS-A1320 IHC of human nasal mucosa, allergic rhinitis, eosinophils. Immunohistochemistry of formalin-fixed, paraffin-embedded tissue after heat-induced antigen retrieval.

Requested From:

Japan

Laboratory Reagent For In Vitro Research Use Only

Not for resale without prior written consent from LifeSpan BioSciences, Inc.

Created on 9/23/2014

© 2014 LifeSpan BioSciences