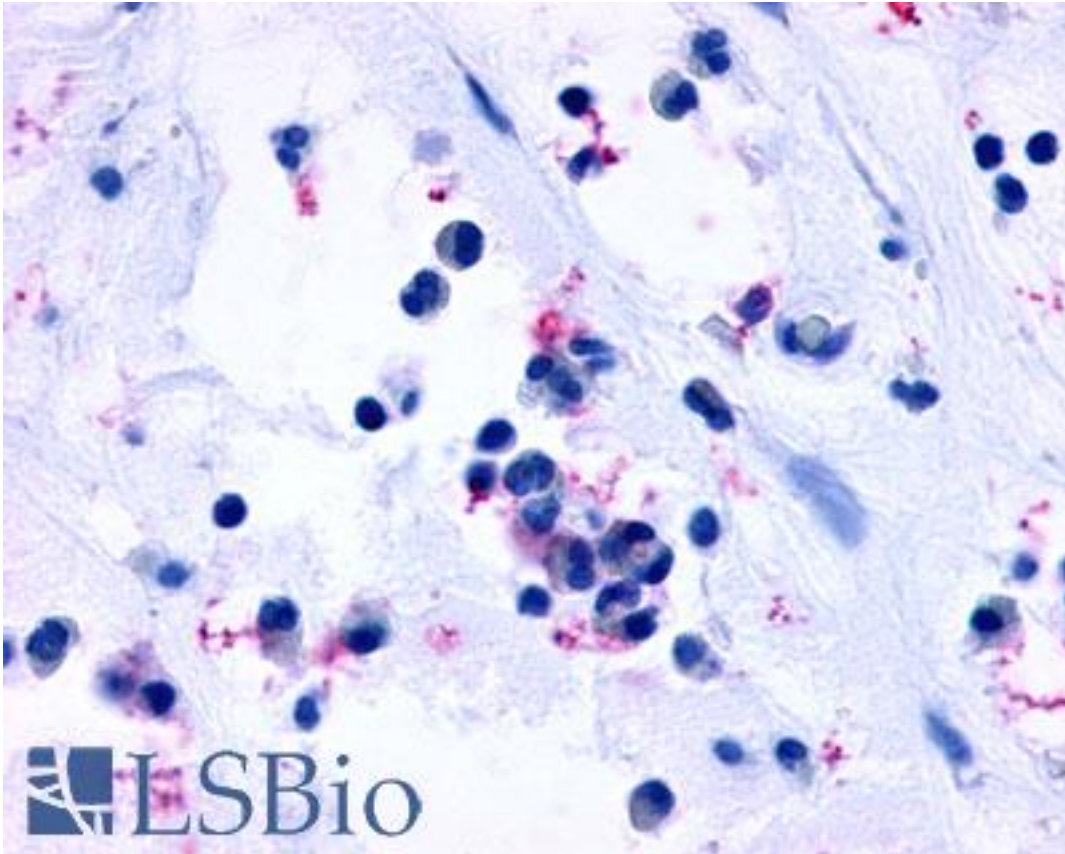


CYSLTR1 / CYSLT1 Rabbit anti-Human Polyclonal (Extracellular Domain) Antibody - LS-A1317 - LSBio	
<b>CatalogID:</b>	LS-A1317
<b>Target:</b>	cysteinyl leukotriene receptor 1 (CYSLTR1)
<b>Synonyms:</b>	CYSLTR1 Antibody, Cys-LT1 receptor Antibody, CysLT(1) Antibody, Cys-leukotriene-1 receptor Antibody, CYSLT1 Antibody, CYSLT1R Antibody, CYSLTR Antibody, HG55 Antibody, LTD4 receptor Antibody, HMTMF81 Antibody, Cysteinyl It1 receptor Antibody
<b>Family / Subfamily:</b>	GPCR / Chemoattractant
<b>Host</b>	CYSLTR1 antibody was produced in Rabbit
<b>Clonality:</b>	Polyclonal
<b>Immunogen Species:</b>	CYSLTR1 / CYSLT1 antibody was raised against Human
<b>Antigen Type:</b>	Synthetic peptide
<b>Immunogen:</b>	CYSLTR1 / CYSLT1 antibody was raised against synthetic 20 amino acid peptide from 3rd extracellular domain of human CYSLTR1 / CYSLT1. Percent identity with other species by BLAST analysis: Human, Gorilla, Gibbon, Monkey (100%); Rabbit, Guinea pig (85%); Bovine, Elephant, Horse, Pig (80%).
<b>Specificity:</b>	Human CYSLTR1 / CYSLT1. BLAST analysis of the peptide immunogen showed no homology with other human proteins, except NMU (45%).
<b>Epitope:</b>	Extracellular Domain
<b>Reactivity:</b>	Human, Gorilla, Gibbon, Monkey
<b>Purification:</b>	Immunoaffinity purified
<b>Presentation:</b>	PBS, 0.1% sodium azide.
<b>Recommended Storage:</b>	Long term: -70°C; Short term: +4°C
<b>Uses:</b>	IHC - Paraffin (6 - 14 µg/ml) (Optimal dilution to be determined by the researcher)
<b>Size:</b>	50 µg
<b>Concentration:</b>	1 mg/ml

**Immunohistochemistry Image:**



Anti-CYSLTR1 / CYSLT1 antibody LS-A1317 IHC of human nasal mucosa, allergic rhinitis, eosinophils. Immunohistochemistry of formalin-fixed, paraffin-embedded tissue after heat-induced antigen retrieval.

**Requested From:**

Japan

Laboratory Reagent For In Vitro Research Use Only

Not for resale without prior written consent from LifeSpan BioSciences, Inc.

Created on 9/23/2014

© 2014 LifeSpan BioSciences