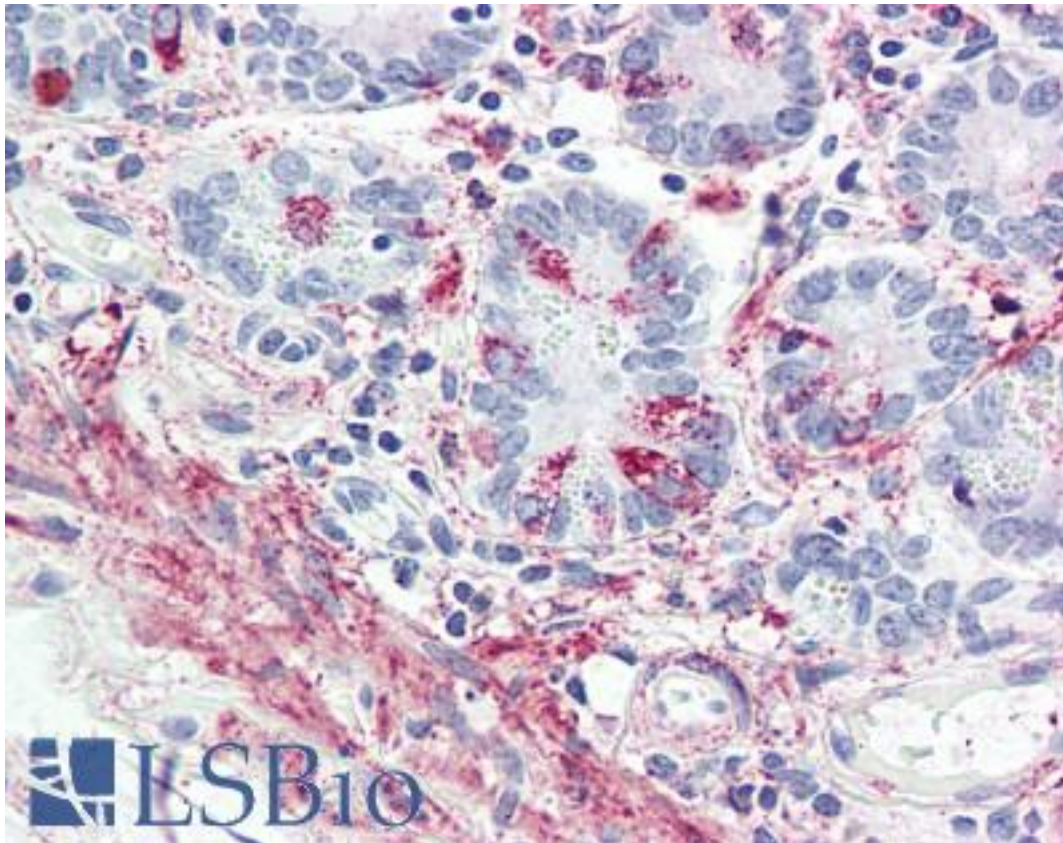


GLP2R / Glp-2 Rabbit anti-Human Polyclonal (Internal) Antibody - LS-A1313 - LSBio

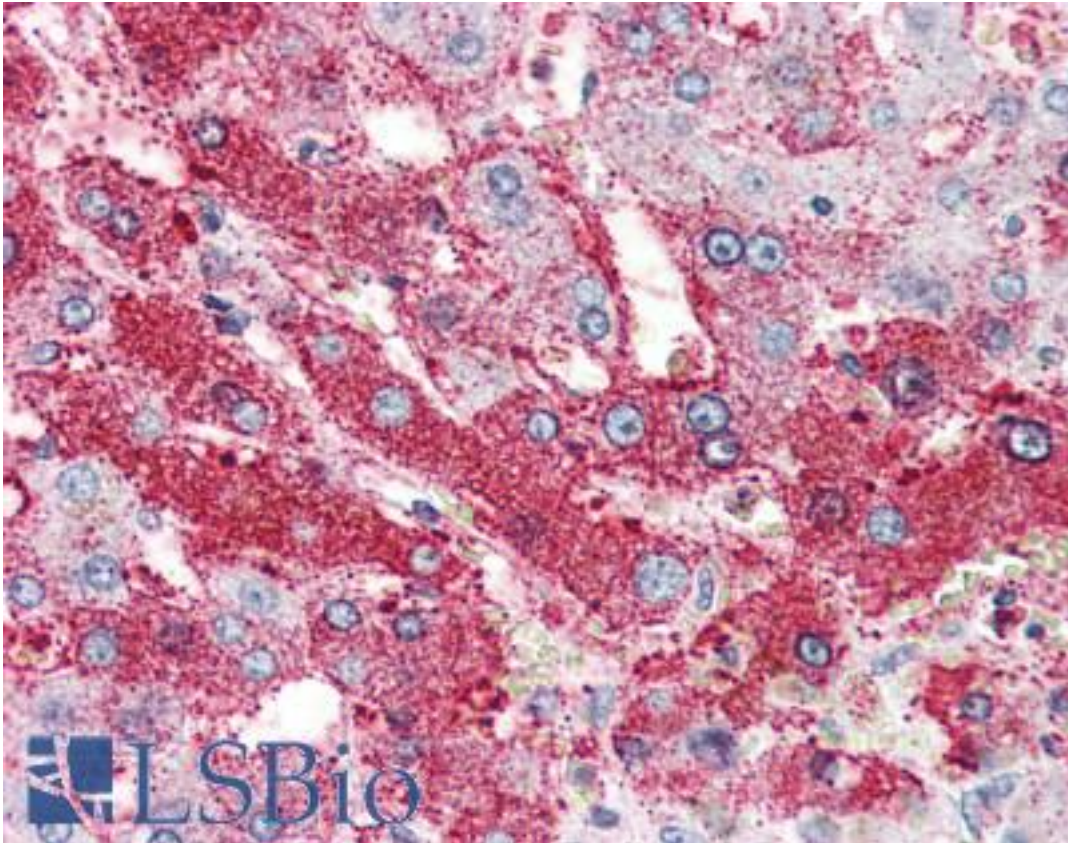
<b>CatalogID:</b>	LS-A1313
<b>Target:</b>	glucagon-like peptide 2 receptor (GLP2R)
<b>Synonyms:</b>	GLP2R Antibody, Glp-2 Antibody, GLP-2-R Antibody, GLP-2 receptor Antibody, GLP-2R Antibody, Glp2 receptor Antibody
<b>Family / Subfamily:</b>	GPCR / Glucagon
<b>Host</b>	GLP2R antibody was produced in Rabbit
<b>Clonality:</b>	Polyclonal
<b>Immunogen Species:</b>	GLP2R / Glp-2 antibody was raised against Human
<b>Antigen Type:</b>	Synthetic peptide
<b>Immunogen:</b>	GLP2R / Glp-2 antibody was raised against synthetic 16 amino acid peptide from internal region of human GLP2R. Percent identity with other species by BLAST analysis: Human, Monkey, Marmoset (100%); Gorilla, Gibbon (94%); Rat, Dog, Bovine, Elephant, Panda (81%).
<b>Specificity:</b>	Human GLP2R. BLAST analysis of the peptide immunogen showed no homology with other human proteins.
<b>Epitope:</b>	Internal
<b>Reactivity:</b>	Human, Monkey
<b>Predicted Reactivity:</b>	Gorilla, Gibbon
<b>Purification:</b>	Immunoaffinity purified
<b>Presentation:</b>	PBS, 0.1% sodium azide.
<b>Recommended Storage:</b>	Long term: -70°C; Short term: +4°C
<b>Usage Summary:</b>	Immunohistochemistry with formalin-fixed paraffin-embedded tissues requires pretreatment with Proteinase K.
<b>Uses:</b>	IHC - Paraffin (5 - 10 µg/ml) (Optimal dilution to be determined by the researcher)
<b>Size:</b>	50 µg
<b>Concentration:</b>	1 mg/ml

**Immunohistochemistry Image:**



Anti-GLP2R antibody LS-A1313 IHC of human small intestine. Immunohistochemistry of formalin-fixed, paraffin-embedded tissue after heat-induced antigen retrieval.

**Immunohistochemistry Image:**



Anti-GLP2R antibody LS-A1313 IHC of human liver. Immunohistochemistry of formalin-fixed, paraffin-embedded tissue after heat-induced antigen retrieval.

**Requested From:**

Japan

Laboratory Reagent For In Vitro Research Use Only

Not for resale without prior written consent from LifeSpan BioSciences, Inc.

Created on 9/23/2014

© 2014 LifeSpan BioSciences