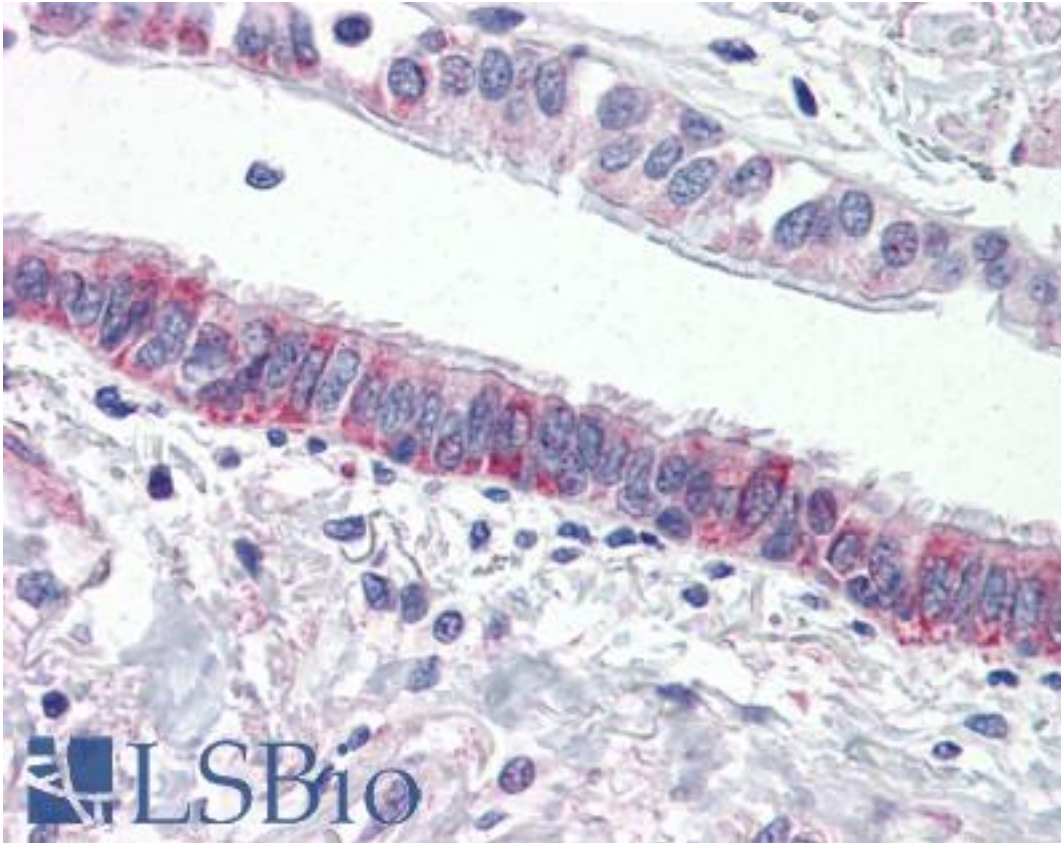


F2RL3 / PAR4 Rabbit anti-Human Polyclonal (N-Terminus) Antibody - LS-A1308 - LSBio

CatalogID:	LS-A1308
Target:	coagulation factor II (thrombin) receptor-like 3 (F2RL3)
Synonyms:	F2RL3 Antibody, PAR4 Antibody, Thrombin receptor-like 3 Antibody, Par-4 Antibody, Protease-activated receptor-4 Antibody
Family / Subfamily:	GPCR / Proteinase-activated
Host	F2RL3 antibody was produced in Rabbit
Clonality:	Polyclonal
Immunogen Species:	F2RL3 / PAR4 antibody was raised against Human
Antigen Type:	Synthetic peptide
Immunogen:	F2RL3 / PAR4 antibody was raised against synthetic 16 amino acid peptide from N-terminal extracellular domain of human F2RL3 / PAR4. Percent identity with other species by BLAST analysis: Human, Gorilla, Gibbon (100%); Monkey, Marmoset (94%); Mouse, Pig (88%); Bovine, Elephant (81%).
Specificity:	Human F2RL3 / PAR4. BLAST analysis of the peptide immunogen showed no homology with other human proteins.
Epitope:	N-Terminus
Reactivity:	Human, Gorilla, Gibbon
Predicted Reactivity:	Monkey
Purification:	Immunoaffinity purified
Presentation:	PBS, 0.1% sodium azide.
Recommended Storage:	Long term: -70°C; Short term: +4°C
Uses:	IHC - Paraffin (6 - 13 µg/ml) (Optimal dilution to be determined by the researcher)
Size:	50 µg
Concentration:	1 mg/ml

Immunohistochemistry Image:



Anti-F2RL3 / PAR4 antibody LS-A1308 IHC of human lung, respiratory epithelium.
Immunohistochemistry of formalin-fixed, paraffin-embedded tissue after heat-induced antigen retrieval.

Requested From:

Japan

Laboratory Reagent For In Vitro Research Use Only

Not for resale without prior written consent from LifeSpan BioSciences, Inc.

Created on 9/23/2014

© 2014 LifeSpan BioSciences