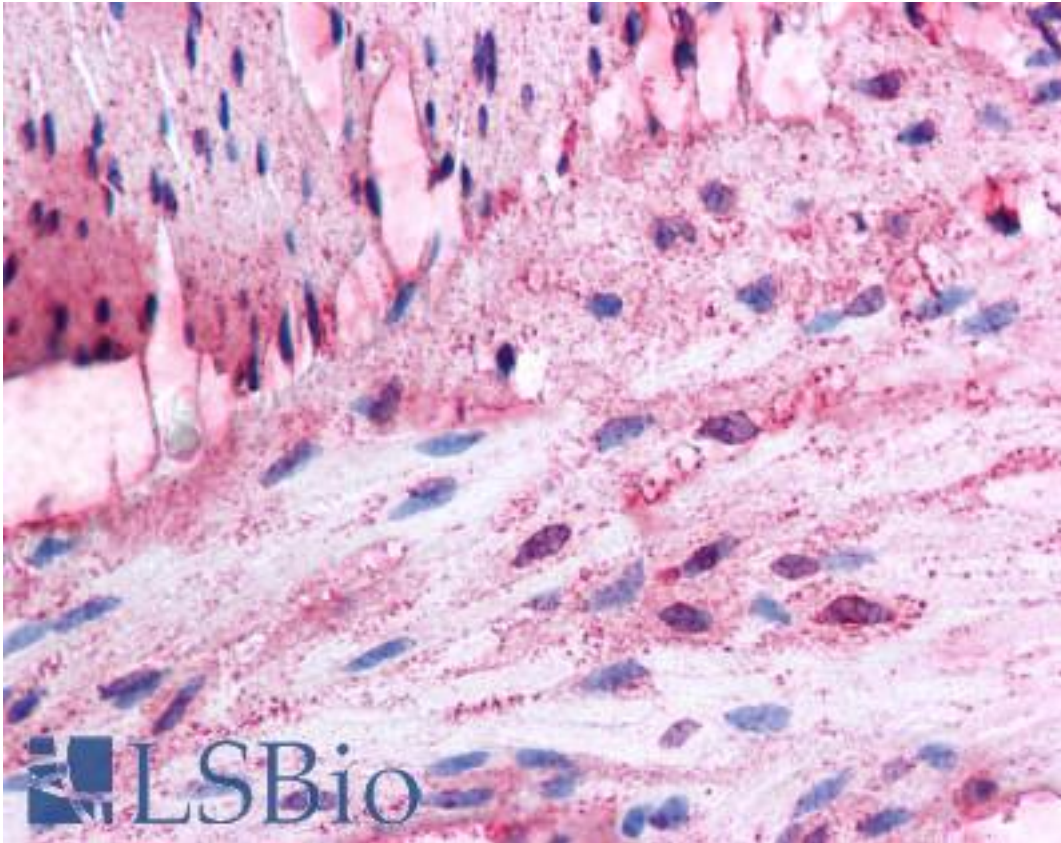


ADRA1D Rabbit anti-Human Polyclonal (Extracellular Domain) Antibody - LS-A13 - LSBio	
CatalogID:	LS-A13
Target:	adrenoceptor alpha 1D (ADRA1D)
Synonyms:	ADRA1D Antibody, Alpha 1d Antibody, Alpha-1D adrenergic receptor Antibody, ADRA1R Antibody, Alpha-1D adrenoceptor Antibody, Alpha-1D adrenoreceptor Antibody, ALPHA1 Antibody, Alpha-1D-adrenergic receptor Antibody, Alpha-adrenergic receptor 1a Antibody, Alpha1delta-AR Antibody, DAR Antibody, ADRA1 Antibody, Adrenoceptor alpha 1D Antibody, Alpha-1A adrenergic receptor Antibody, DJ779E11.2 Antibody
Family / Subfamily:	GPCR / Adrenergic
Host	ADRA1D antibody was produced in Rabbit
Clonality:	Polyclonal
Immunogen Species:	ADRA1D antibody was raised against Human
Antigen Type:	Synthetic peptide
Immunogen:	ADRA1D antibody was raised against synthetic 18 amino acid peptide from 2nd extracellular domain of human ADRA1D. Percent identity with other species by BLAST analysis: Human, Gorilla, Monkey, Marmoset, Dog, Panda, Horse, Pig, Guinea pig (100%); Mouse, Rat, Bovine, Hamster, Rabbit, Opossum (94%); Bat (89%).
Specificity:	Human ADRA1D. BLAST analysis of the peptide immunogen showed no homology with other human proteins, except ADRA1B (56%).
Epitope:	Extracellular Domain
Reactivity:	Human, Gorilla, Monkey, Dog, Guinea pig, Horse, Pig
Predicted Reactivity:	Mouse, Rat, Bovine, Hamster, Rabbit
Purification:	Immunoaffinity purified
Presentation:	PBS, 0.1% sodium azide.
Recommended Storage:	Long term: -70°C; Short term: +4°C
Uses:	IHC - Paraffin (2.5 µg/ml) (Optimal dilution to be determined by the researcher)
Size:	50 µg
Concentration:	1 mg/ml

Immunohistochemistry Image:



Anti-ADRA1D antibody LS-A13 IHC of human colon, smooth muscle. Immunohistochemistry of formalin-fixed, paraffin-embedded tissue after heat-induced antigen retrieval.

Requested From:

Japan

Laboratory Reagent For In Vitro Research Use Only

Not for resale without prior written consent from LifeSpan BioSciences, Inc.

Created on 9/23/2014

© 2014 LifeSpan BioSciences