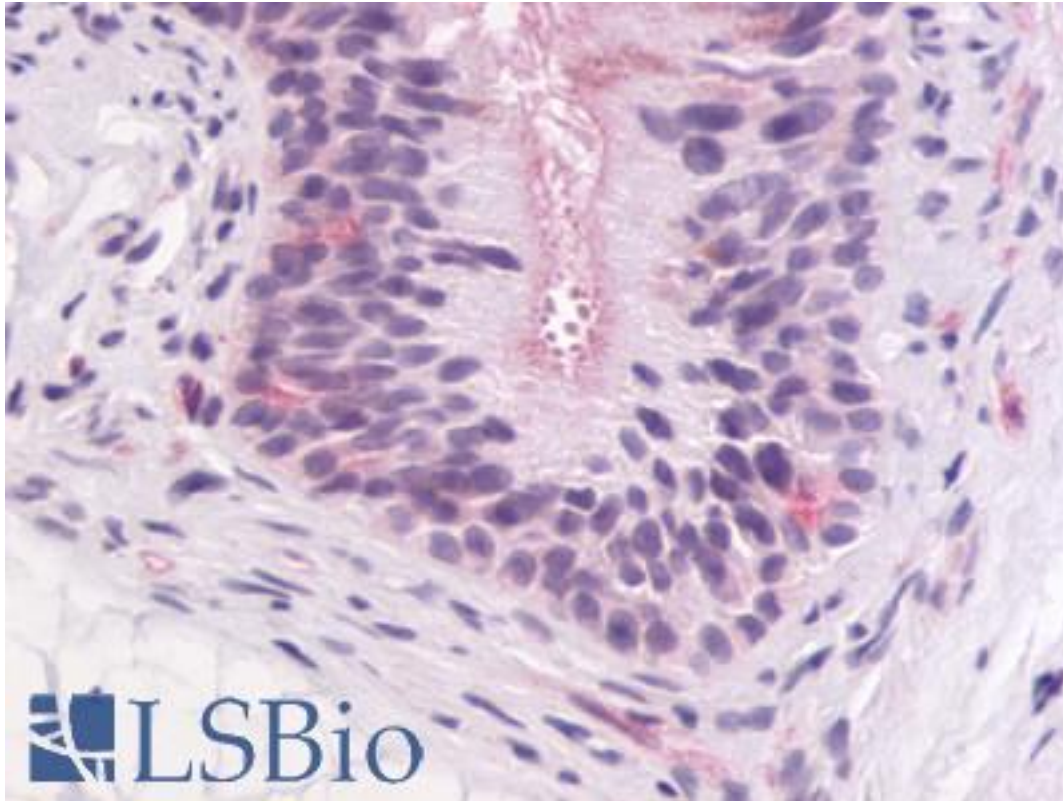


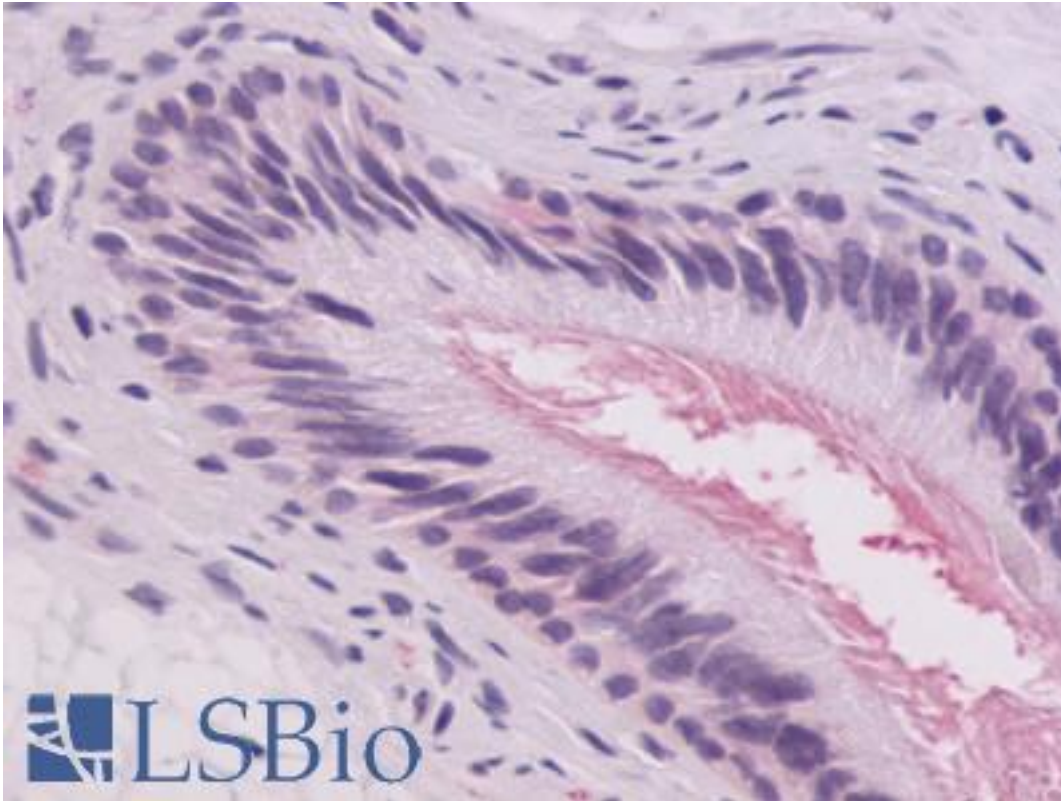
GPR64 Rabbit anti-Human Polyclonal (C-Terminus) Antibody - LS-A1264 - LSBio	
CatalogID:	LS-A1264
Target:	G protein-coupled receptor 64 (GPR64)
Synonyms:	GPR64 Antibody, Epididymal protein 6 Antibody, G protein-coupled receptor 64 Antibody, EDDM6 Antibody, G-protein coupled receptor 64 Antibody, HE6 Antibody, TM7LN2 Antibody
Family / Subfamily:	GPCR / Orphan-B
Host	GPR64 antibody was produced in Rabbit
Clonality:	Polyclonal
Immunogen Species:	GPR64 antibody was raised against Human
Antigen Type:	Synthetic peptide
Immunogen:	GPR64 antibody was raised against synthetic 16 amino acid peptide from C-terminus of human GPR64. Percent identity with other species by BLAST analysis: Human, Gorilla, Gibbon, Monkey, Dog, Bat, Pig (100%); Marmoset, Bovine, Panda, Horse (94%); Elephant, Rabbit (88%); Mouse, Rat, Hamster, Opossum (81%).
Specificity:	Human GPR64. BLAST analysis of the peptide immunogen showed no homology with other human proteins.
Epitope:	C-Terminus
Reactivity:	Human, Gorilla, Gibbon, Bat, Dog, Pig
Predicted Reactivity:	Monkey, Bovine, Horse
Purification:	Immunoaffinity purified
Presentation:	PBS, 0.1% sodium azide.
Recommended Storage:	Long term: -70°C; Short term: +4°C
Uses:	IHC - Paraffin (3 - 7 µg/ml) (Optimal dilution to be determined by the researcher)
Size:	50 µg
Concentration:	1 mg/ml

Immunohistochemistry Image:



Anti-GPR64 antibody IHC of human epididymis. Immunohistochemistry of formalin-fixed, paraffin-embedded tissue after heat-induced antigen retrieval. Antibody LS-A1264 dilution 3-7 ug/ml.

Immunohistochemistry Image:



Anti-GPR64 antibody IHC of human epididymis. Immunohistochemistry of formalin-fixed, paraffin-embedded tissue after heat-induced antigen retrieval. Antibody LS-A1264 dilution 3-7 ug/ml.

Requested From:

Japan

Laboratory Reagent For In Vitro Research Use Only

Not for resale without prior written consent from LifeSpan BioSciences, Inc.

Created on 9/23/2014

© 2014 LifeSpan BioSciences