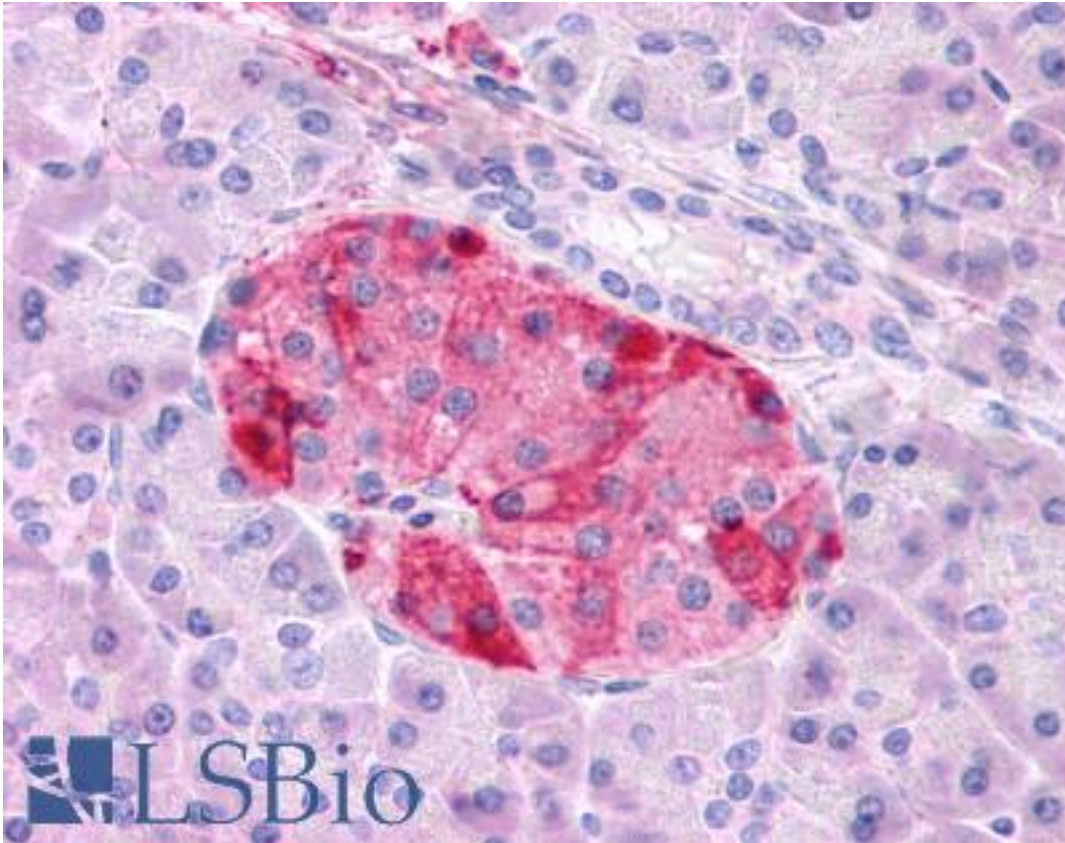


GIPR / GIP Receptor Rabbit anti-Human Polyclonal (N-Terminus) Antibody - LS-A1250 - LSBio

<b>CatalogID:</b>	LS-A1250
<b>Target:</b>	gastric inhibitory polypeptide receptor (GIPR)
<b>Synonyms:</b>	GIPR Antibody, GIP receptor Antibody, PGQTL2 Antibody, GIP-R Antibody
<b>Family / Subfamily:</b>	GPCR / Gastric inhibitory polypeptide
<b>Host</b>	GIPR antibody was produced in Rabbit
<b>Clonality:</b>	Polyclonal
<b>Immunogen Species:</b>	GIPR / GIP Receptor antibody was raised against Human
<b>Antigen Type:</b>	Synthetic peptide
<b>Immunogen:</b>	GIPR / GIP Receptor antibody was raised against synthetic 17 amino acid peptide from N-terminal extracellular domain of human GIPR. Percent identity with other species by BLAST analysis: Human, Gorilla, Bovine, Dog, Panda (100%); Horse, Rabbit (94%); Marmoset, Hamster (88%); Rat (82%).
<b>Specificity:</b>	Human GIPR. BLAST analysis of the peptide immunogen showed no homology with other human proteins, except GHRHR (100%), TG (41%).
<b>Epitope:</b>	N-Terminus
<b>Reactivity:</b>	Human, Gorilla, Bovine, Dog
<b>Predicted Reactivity:</b>	Horse, Rabbit
<b>Purification:</b>	Immunoaffinity purified
<b>Presentation:</b>	PBS, 0.1% sodium azide.
<b>Recommended Storage:</b>	Long term: -70°C; Short term: +4°C
<b>Uses:</b>	IHC - Paraffin (16 µg/ml) (Optimal dilution to be determined by the researcher)
<b>Size:</b>	50 µg
<b>Concentration:</b>	1 mg/ml

**Immunohistochemistry Image:**



Anti-GIPR antibody LS-A1250 IHC of human pancreas. Immunohistochemistry of formalin-fixed, paraffin-embedded tissue after heat-induced antigen retrieval.

**Requested From:**

Japan

Laboratory Reagent For In Vitro Research Use Only

Not for resale without prior written consent from LifeSpan BioSciences, Inc.

Created on 9/23/2014

© 2014 LifeSpan BioSciences