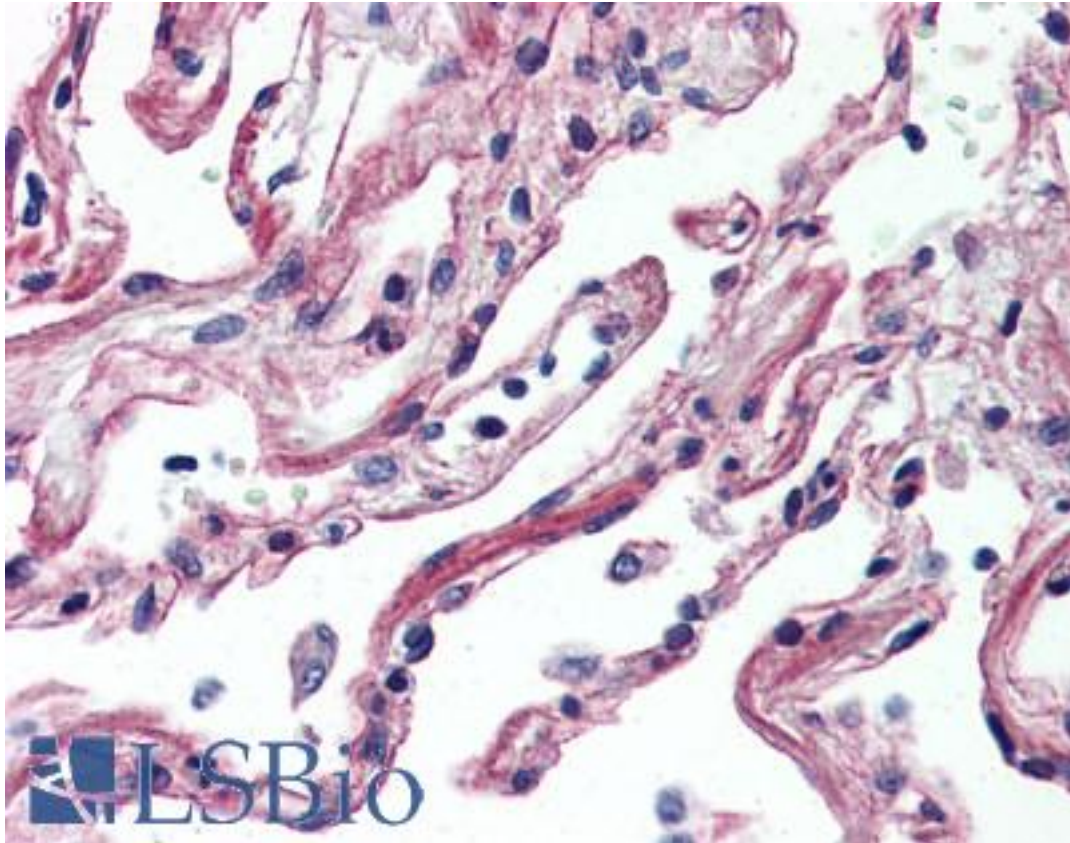


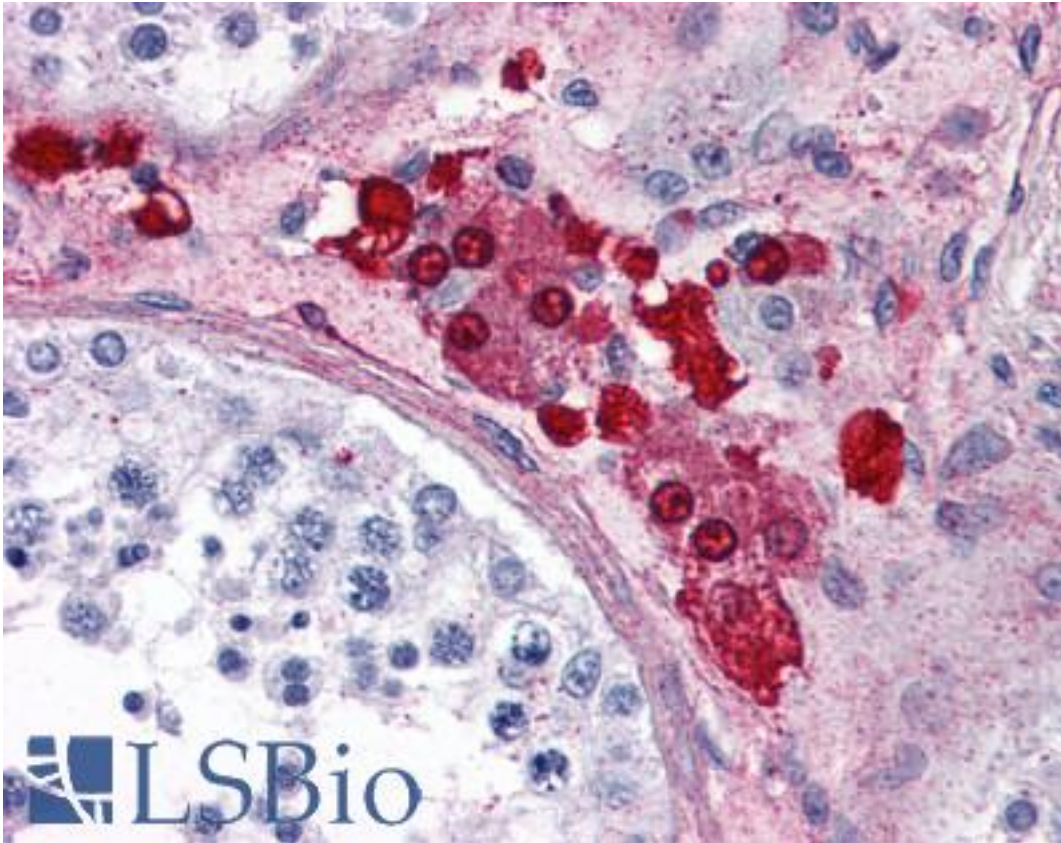
ADORA2A/Adenosine A2A Receptor Rabbit anti-Human Polyclonal (C-Terminus) Antibody - LS-A1237 - LSBio	
CatalogID:	LS-A1237
Target:	adenosine A2a receptor (ADORA2A)
Synonyms:	ADORA2A Antibody, Adenosine receptor A2a Antibody, ADORA2 Antibody, A2a receptor Antibody, Adenosine A2a receptor Antibody, Adenosine A2 receptor Antibody, Adenosine receptor subtype A2a Antibody, HA2aR Antibody, RDC8 Antibody
Family / Subfamily:	GPCR / Adenosine
Host	ADORA2A antibody was produced in Rabbit
Clonality:	Polyclonal
Immunogen Species:	ADORA2A/Adenosine A2A Receptor antibody was raised against Human
Antigen Type:	Synthetic peptide
Immunogen:	ADORA2A/Adenosine A2A Receptor antibody was raised against synthetic 20 amino acid peptide from C-terminal cytoplasmic domain of human ADORA2A. Percent identity with other species by BLAST analysis: Human (100%); Gorilla, Gibbon, Monkey, Marmoset (95%); Dog (80%).
Specificity:	Human ADORA2A. BLAST analysis of the peptide immunogen showed no homology with other human proteins.
Epitope:	C-Terminus
Reactivity:	Human
Predicted Reactivity:	Gorilla, Gibbon, Monkey
Purification:	Immunoaffinity purified
Presentation:	PBS, 0.1% sodium azide.
Recommended Storage:	Long term: -70°C; Short term: +4°C
Usage Summary:	Antigen retrieval requires Proteinase K treatment.
Uses:	IHC - Paraffin (10 µg/ml) (Optimal dilution to be determined by the researcher)
Size:	50 µg
Concentration:	1 mg/ml

Immunohistochemistry Image:



Anti-ADORA2A antibody LS-A1237 IHC of human lung. Immunohistochemistry of formalin-fixed, paraffin-embedded tissue after heat-induced antigen retrieval.

Immunohistochemistry Image:



Anti-ADORA2A antibody LS-A1237 IHC of human testis. Immunohistochemistry of formalin-fixed, paraffin-embedded tissue after heat-induced antigen retrieval.

Requested From:

Japan

Laboratory Reagent For In Vitro Research Use Only

Not for resale without prior written consent from LifeSpan BioSciences, Inc.

Created on 9/23/2014

© 2014 LifeSpan BioSciences