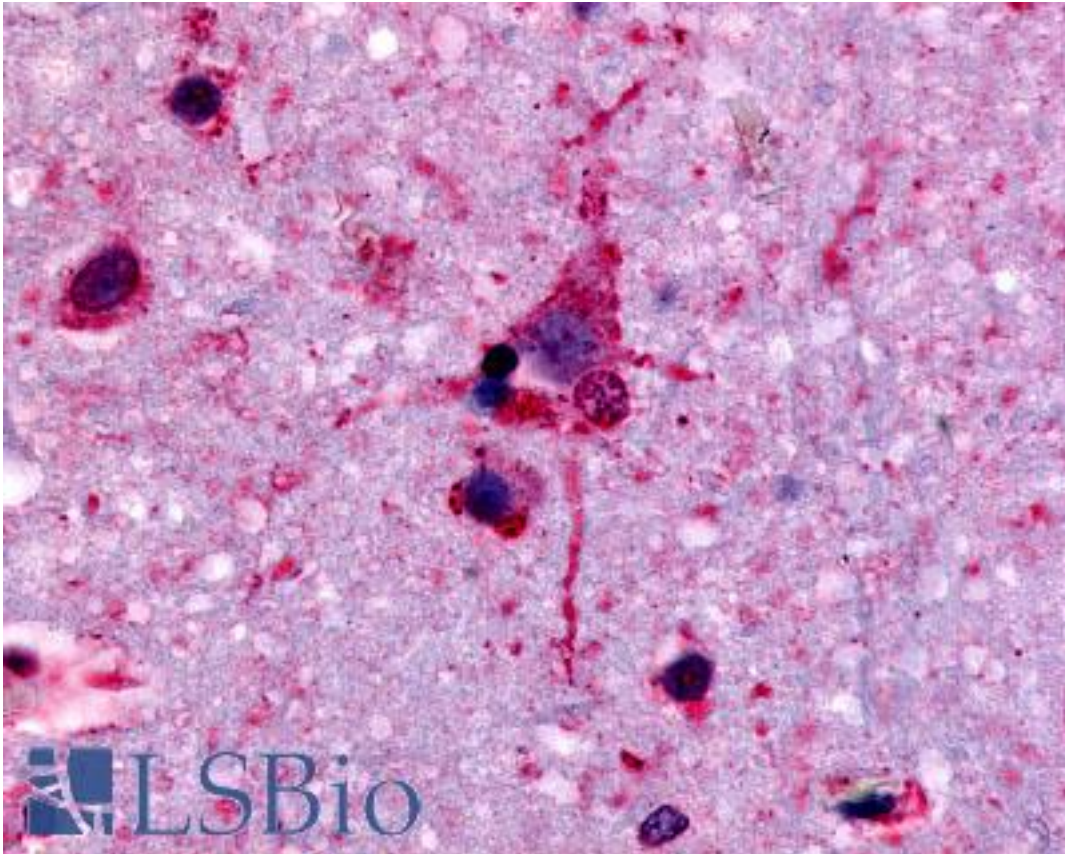


GPR45 Rabbit anti-Human Polyclonal (Extracellular Domain) Antibody - LS-A1228 - LSBio	
CatalogID:	LS-A1228
Target:	G protein-coupled receptor 45 (GPR45)
Synonyms:	GPR45 Antibody, G protein-coupled receptor 45 Antibody, PSP24(ALPHA) Antibody, PSP24-1 Antibody, PSP24 Antibody, PSP24A Antibody, PSP24-alpha Antibody
Family / Subfamily:	GPCR / Orphan-A
Host	GPR45 antibody was produced in Rabbit
Clonality:	Polyclonal
Immunogen Species:	GPR45 antibody was raised against Human
Antigen Type:	Synthetic peptide
Immunogen:	GPR45 antibody was raised against synthetic 16 amino acid peptide from 2nd extracellular domain of human GPR45. Percent identity with other species by BLAST analysis: Human, Gibbon, Monkey, Marmoset, Rabbit (100%); Gorilla, Bat, Lizard (94%); Mouse, Rat, Bovine, Elephant, Panda, Horse (88%); Hamster, Opossum (81%).
Specificity:	Human GPR45. BLAST analysis of the peptide immunogen showed no homology with other human proteins.
Epitope:	Extracellular Domain
Reactivity:	Human, Gibbon, Monkey, Rabbit
Predicted Reactivity:	Gorilla, Bat
Purification:	Immunoaffinity purified
Presentation:	PBS, 0.1% sodium azide.
Recommended Storage:	Long term: -70°C; Short term: +4°C
Uses:	IHC - Paraffin (8 - 16 µg/ml) (Optimal dilution to be determined by the researcher)
Size:	50 µg
Concentration:	1 mg/ml

Immunohistochemistry Image:



Anti-GPR45 antibody LS-A1228 IHC of human neurons and glia. Immunohistochemistry of formalin-fixed, paraffin-embedded tissue after heat-induced antigen retrieval.

Requested From:

Japan

Laboratory Reagent For In Vitro Research Use Only

Not for resale without prior written consent from LifeSpan BioSciences, Inc.

Created on 9/23/2014

© 2014 LifeSpan BioSciences