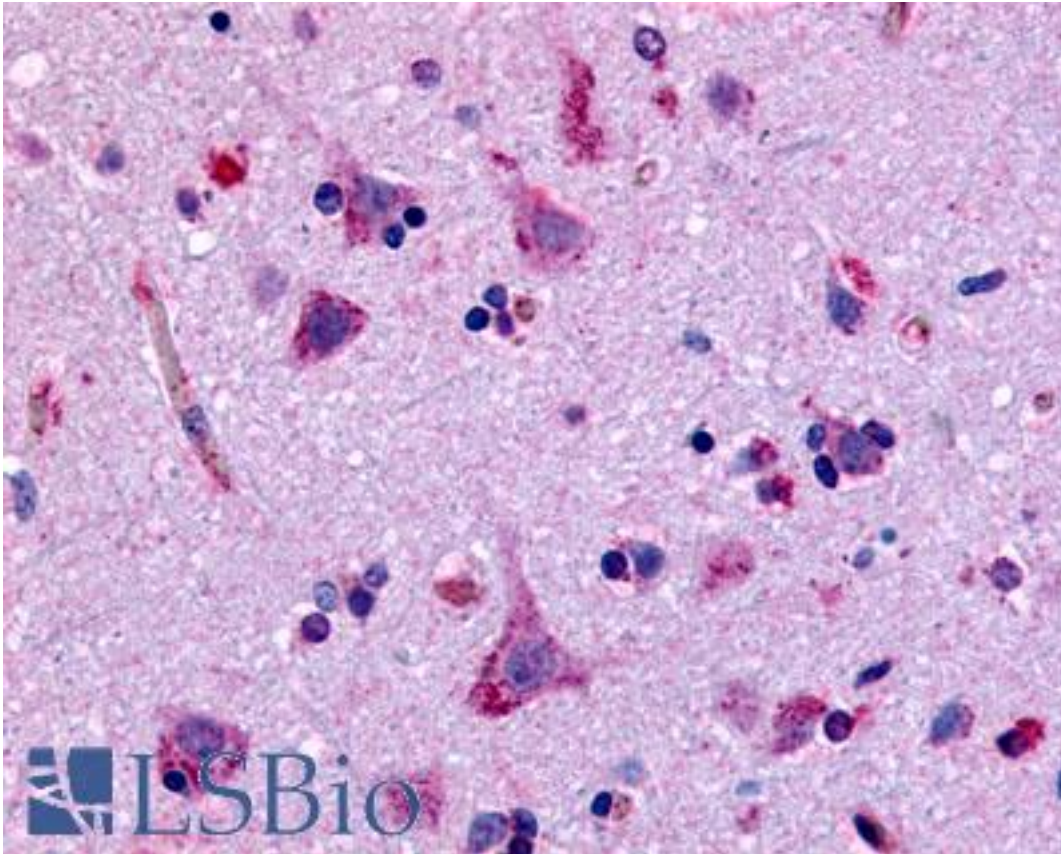


**GPR45 Rabbit anti-Human Polyclonal (N-Terminus) Antibody - LS-A1227 - LSBio**

|                              |  |
|------------------------------|--|
| <b>CatalogID:</b>            | LS-A1227   |
| <b>Target:</b>               | G protein-coupled receptor 45 (GPR45)  |
| <b>Synonyms:</b>             | GPR45 Antibody, G protein-coupled receptor 45 Antibody, PSP24(ALPHA) Antibody, PSP24-1 Antibody, PSP24 Antibody, PSP24A Antibody, PSP24-alpha Antibody   |
| <b>Family / Subfamily:</b>   | GPCR / Orphan-A  |
| <b>Host</b>                  | GPR45 antibody was produced in Rabbit  |
| <b>Clonality:</b>            | Polyclonal   |
| <b>Immunogen Species:</b>    | GPR45 antibody was raised against Human  |
| <b>Antigen Type:</b>         | Synthetic peptide  |
| <b>Immunogen:</b>            | GPR45 antibody was raised against synthetic 16 amino acid peptide from N-terminal extracellular domain of human GPR45. Percent identity with other species by BLAST analysis: Human, Gorilla (100%); Gibbon, Monkey (94%); Rabbit (81%). |
| <b>Specificity:</b>          | Human GPR45. BLAST analysis of the peptide immunogen showed no homology with other human proteins.   |
| <b>Epitope:</b>              | N-Terminus   |
| <b>Reactivity:</b>           | Human, Gorilla   |
| <b>Predicted Reactivity:</b> | Gibbon, Monkey   |
| <b>Purification:</b>         | Immunoaffinity purified  |
| <b>Presentation:</b>         | PBS, 0.1% sodium azide.  |
| <b>Recommended Storage:</b>  | Long term: -70°C; Short term: +4°C   |
| <b>Uses:</b>                 | IHC - Paraffin (4 µg/ml) (Optimal dilution to be determined by the researcher)   |
| <b>Size:</b>                 | 50 µg  |
| <b>Concentration:</b>        | 1 mg/ml  |

**Immunohistochemistry Image:**



Anti-GPR45 antibody LS-A1227 IHC of human brain, neurons and glia.  
Immunohistochemistry of formalin-fixed, paraffin-embedded tissue after heat-induced antigen retrieval.

**Requested From:**

Japan

Laboratory Reagent For In Vitro Research Use Only

Not for resale without prior written consent from LifeSpan BioSciences, Inc.

Created on 9/23/2014

© 2014 LifeSpan BioSciences