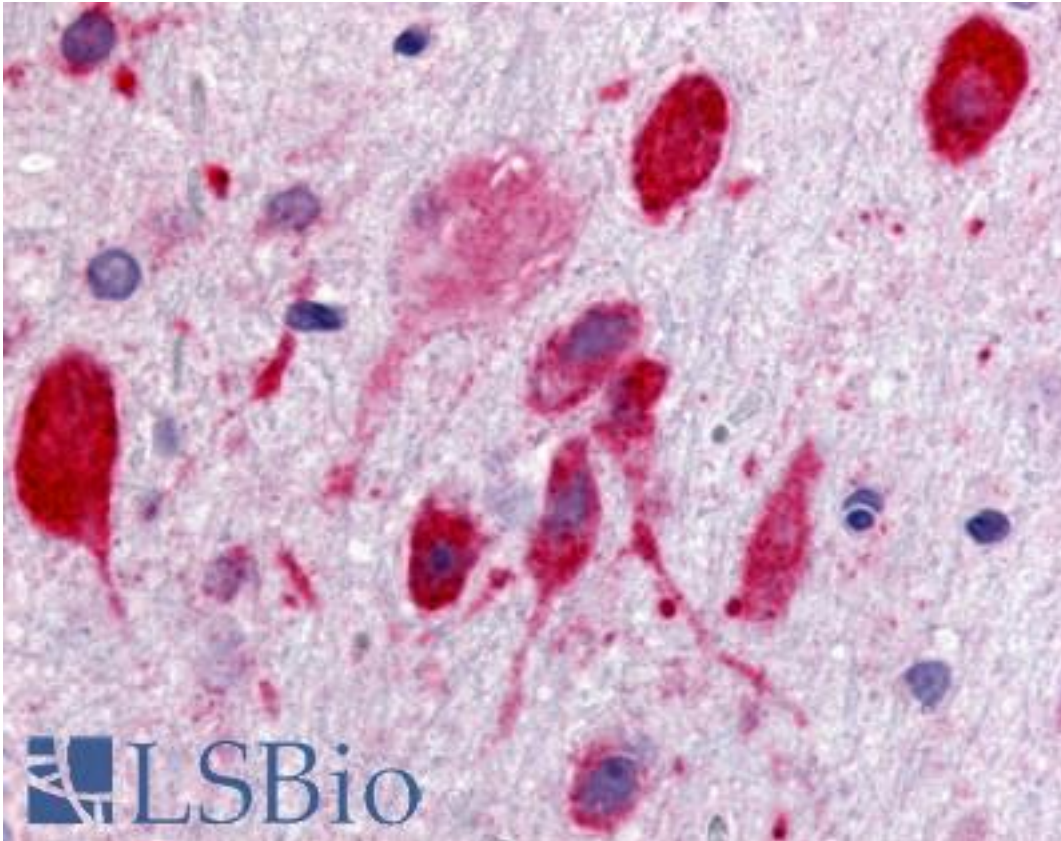


GPR171 Rabbit anti-Human Polyclonal (Cytoplasmic Domain) Antibody - LS-A1224 - LSBio	
CatalogID:	LS-A1224
Target:	G protein-coupled receptor 171 (GPR171)
Synonyms:	GPR171 Antibody, H963 Antibody, G protein-coupled receptor 171 Antibody
Family / Subfamily:	GPCR / Platelet activating factor
Host	GPR171 antibody was produced in Rabbit
Clonality:	Polyclonal
Immunogen Species:	GPR171 antibody was raised against Human
Antigen Type:	Synthetic peptide
Immunogen:	GPR171 antibody was raised against synthetic 17 amino acid peptide from 3rd cytoplasmic domain of human GPR171. Percent identity with other species by BLAST analysis: Human, Gorilla, Gibbon, Monkey, Dog, Bovine, Panda (100%); Marmoset, Bat, Rabbit (94%); Elephant, Platypus (88%); Rat, Horse, Opossum (82%).
Specificity:	Human GPR171. BLAST analysis of the peptide immunogen showed no homology with other human proteins.
Epitope:	Cytoplasmic Domain
Reactivity:	Human, Gorilla, Gibbon, Rat, Bovine, Dog
Predicted Reactivity:	Monkey, Bat, Rabbit
Purification:	Immunoaffinity purified
Presentation:	PBS, 0.1% sodium azide.
Recommended Storage:	Long term: -70°C; Short term: +4°C
Uses:	IHC - Paraffin (5 µg/ml) (Optimal dilution to be determined by the researcher)
Size:	50 µg
Concentration:	1 mg/ml

Immunohistochemistry Image:



Anti-GPR171 antibody LS-A1224 IHC of rat brain, neurons. Immunohistochemistry of formalin-fixed, paraffin-embedded tissue after heat-induced antigen retrieval.

Requested From:

Japan

Laboratory Reagent For In Vitro Research Use Only

Not for resale without prior written consent from LifeSpan BioSciences, Inc.

Created on 9/23/2014

© 2014 LifeSpan BioSciences