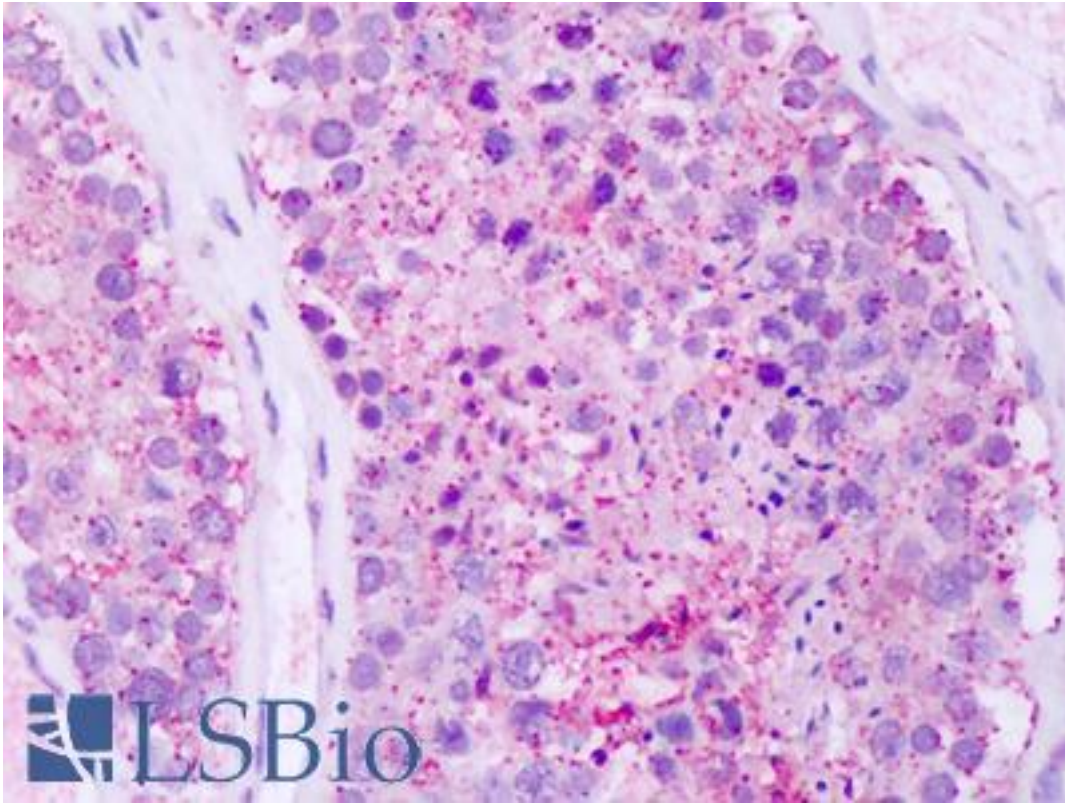


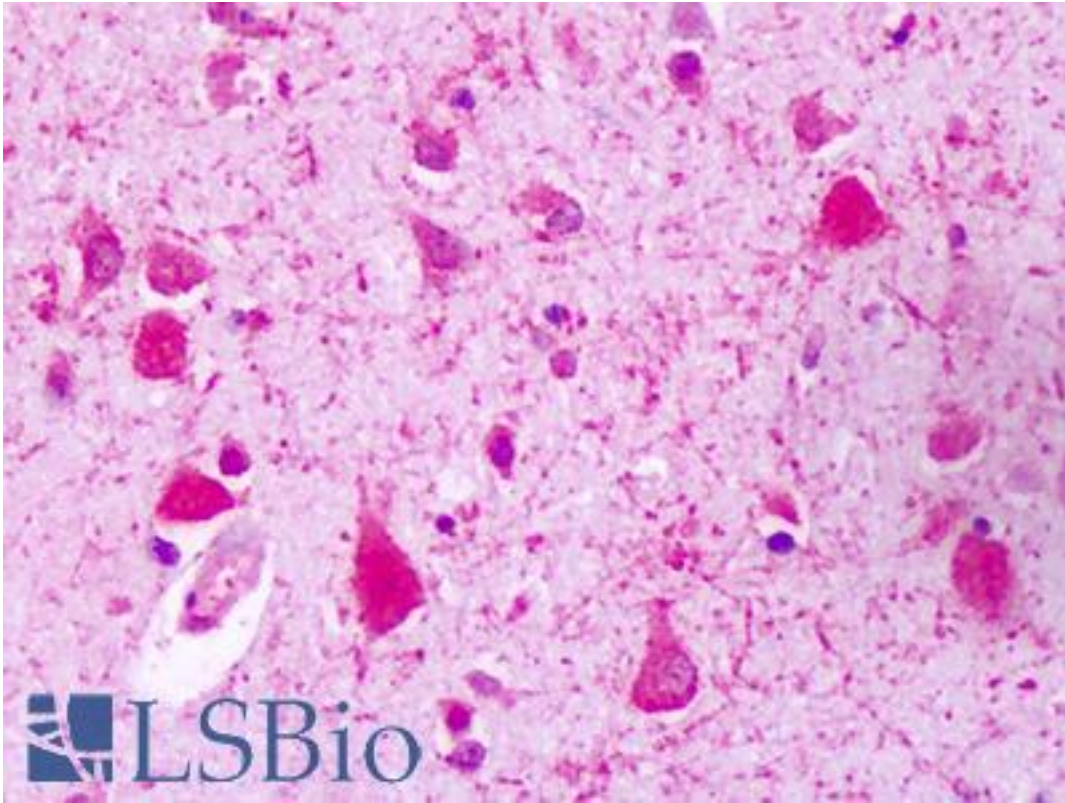
GPRC5A / RAI3 Rabbit anti-Human Polyclonal (C-Terminus) Antibody - LS-A1222 - LSBio	
<b>CatalogID:</b>	LS-A1222
<b>Target:</b>	G protein-coupled receptor, class C, group 5, member A (GPRC5A)
<b>Synonyms:</b>	GPRC5A Antibody, RAIG-1 Antibody, Retinoic acid induced 3 Antibody, Retinoic acid responsive Antibody, GPCR5A Antibody, RAI3 Antibody, RAIG1 Antibody, Retinoic acid-inducible gene 1 Antibody
<b>Family / Subfamily:</b>	GPCR / Orphan-C
<b>Host</b>	GPRC5A antibody was produced in Rabbit
<b>Clonality:</b>	Polyclonal
<b>Immunogen Species:</b>	GPRC5A / RAI3 antibody was raised against Human
<b>Antigen Type:</b>	Synthetic peptide
<b>Immunogen:</b>	GPRC5A / RAI3 antibody was raised against synthetic 16 amino acid peptide from C-terminus of human GPRC5A / RAI3. Percent identity with other species by BLAST analysis: Human, Gorilla (100%); Gibbon, Monkey, Marmoset (94%); Mouse, Rat, Hamster, Panda (88%); Bat, Dog (81%).
<b>Specificity:</b>	Human GPRC5A / RAI3. BLAST analysis of the peptide immunogen showed no homology with other human proteins.
<b>Epitope:</b>	C-Terminus
<b>Reactivity:</b>	Human, Gorilla
<b>Predicted Reactivity:</b>	Gibbon, Monkey
<b>Purification:</b>	Immunoaffinity purified
<b>Presentation:</b>	PBS, 0.1% sodium azide.
<b>Recommended Storage:</b>	Long term: -70°C; Short term: +4°C
<b>Uses:</b>	IHC - Paraffin (4 - 10 µg/ml), ICC (Optimal dilution to be determined by the researcher)
<b>Size:</b>	50 µg
<b>Concentration:</b>	1 mg/ml

**Immunohistochemistry Image:**

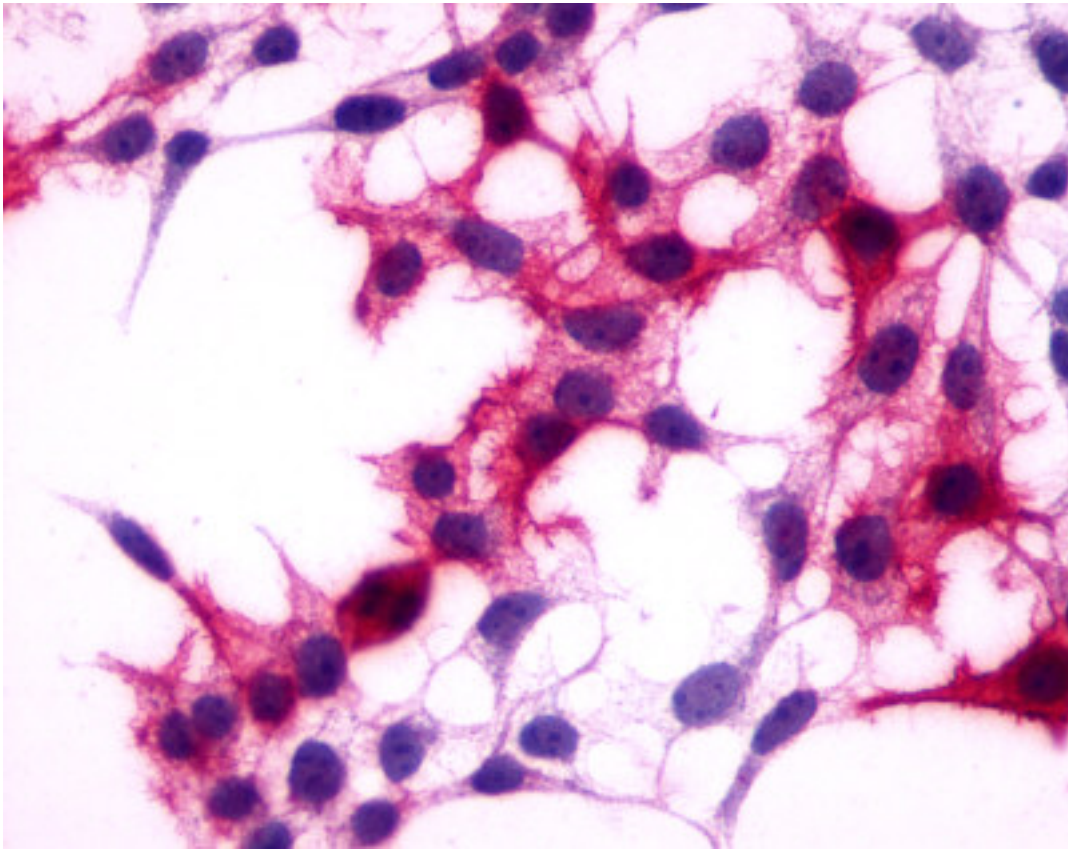


Anti-GPRC5A / RAI3 antibody IHC of human testis. Immunohistochemistry of formalin-fixed, paraffin-embedded tissue after heat-induced antigen retrieval. Antibody LS-A1222 dilution 4-10 ug/ml.

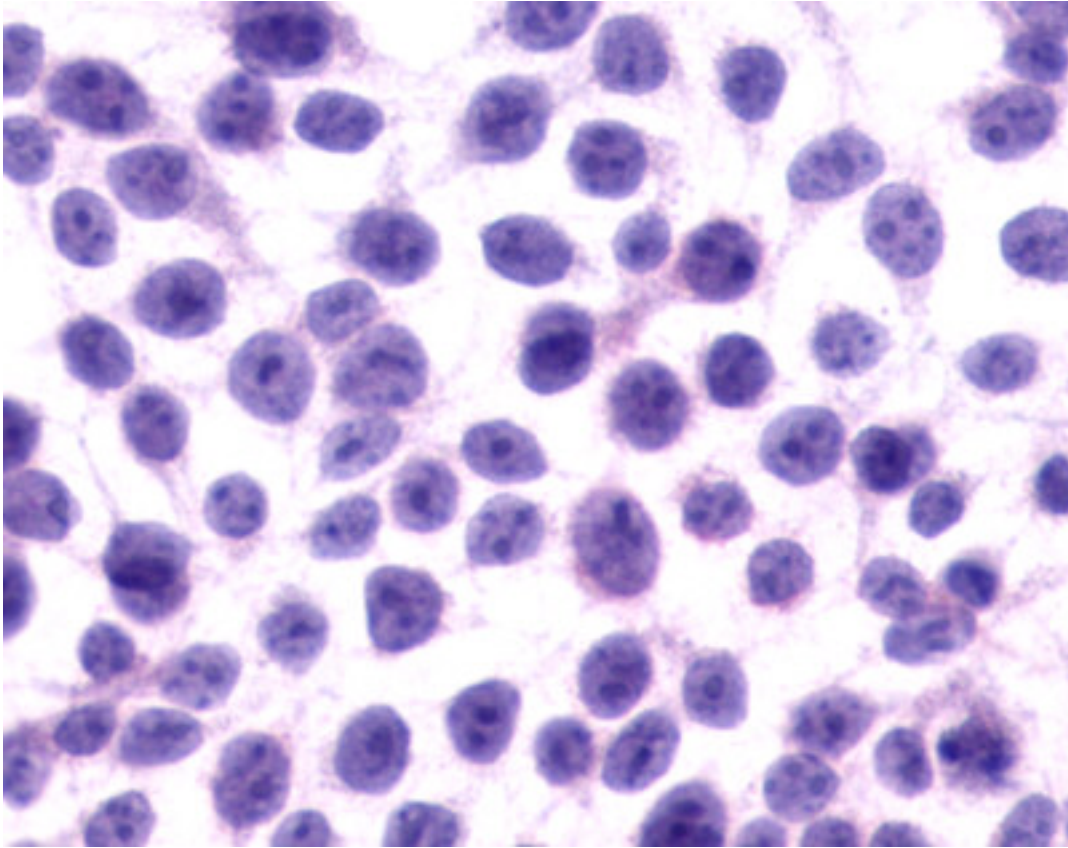
**Immunohistochemistry Image:**



Anti-GPRC5A / RAI3 antibody IHC of human brain, neurons. Immunohistochemistry of formalin-fixed, paraffin-embedded tissue after heat-induced antigen retrieval. Antibody LS-A1222 dilution 4-10 ug/ml.



Cells expressing vector only - immunostained with target antibody



Cells expressing vector only - immunostained with target antibody

**Requested From:**

Japan

Laboratory Reagent For In Vitro Research Use Only

Not for resale without prior written consent from LifeSpan BioSciences, Inc.

Created on 9/23/2014

© 2014 LifeSpan BioSciences