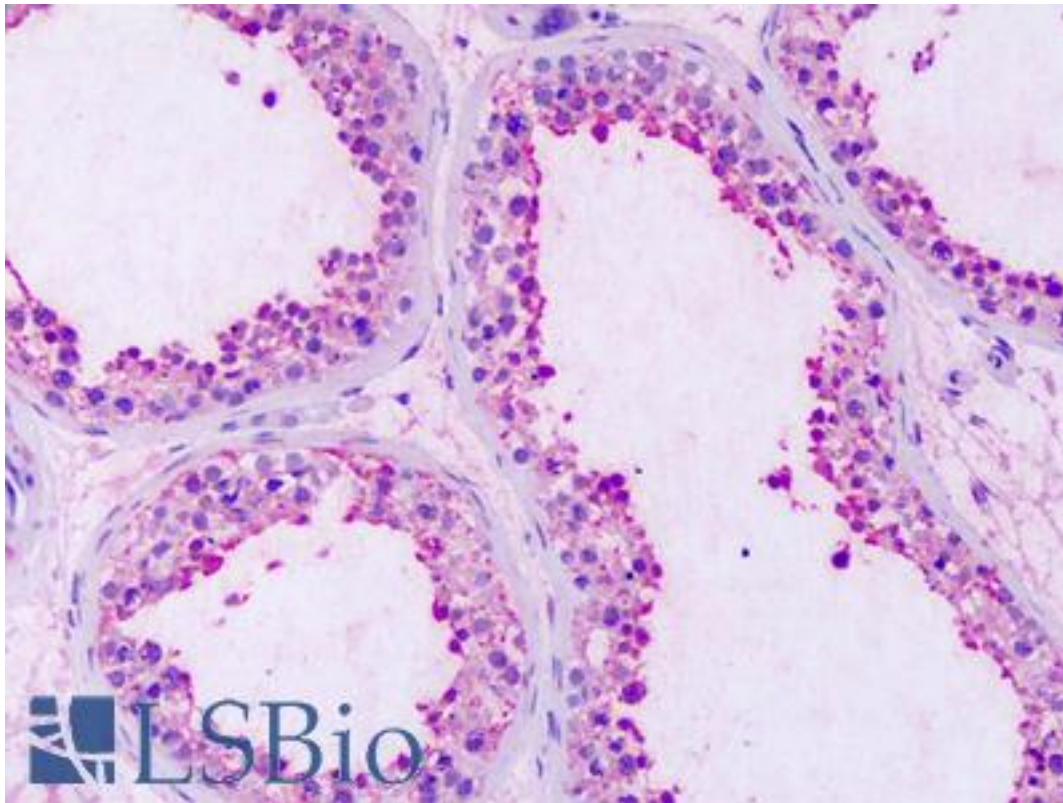


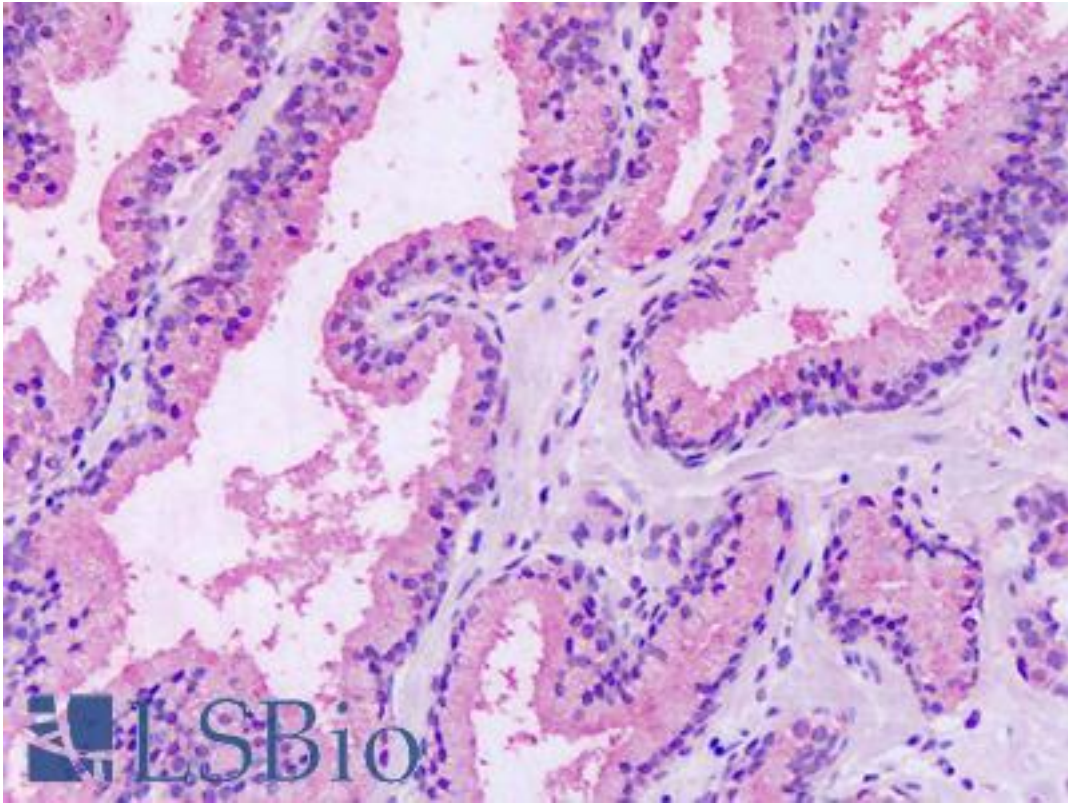
GPRC5A / RAI3 Rabbit anti-Human Polyclonal (Extracellular Domain) Antibody - LS-A1220 - LSBio	
CatalogID:	LS-A1220
Target:	G protein-coupled receptor, class C, group 5, member A (GPRC5A)
Synonyms:	GPRC5A Antibody, RAIG-1 Antibody, Retinoic acid induced 3 Antibody, Retinoic acid responsive Antibody, GPCR5A Antibody, RAI3 Antibody, RAIG1 Antibody, Retinoic acid-inducible gene 1 Antibody
Family / Subfamily:	GPCR / Orphan-C
Host	GPRC5A antibody was produced in Rabbit
Clonality:	Polyclonal
Immunogen Species:	GPRC5A / RAI3 antibody was raised against Human
Antigen Type:	Synthetic peptide
Immunogen:	GPRC5A / RAI3 antibody was raised against synthetic 16 amino acid peptide from 2nd extracellular domain of human GPRC5A / RAI3. Percent identity with other species by BLAST analysis: Human, Gibbon, Monkey (100%); Marmoset, Mouse (94%); Gorilla, Rat, Dog, Bovine, Hamster (88%); Rabbit (81%).
Specificity:	Human GPRC5A / RAI3. BLAST analysis of the peptide immunogen showed no homology with other human proteins.
Epitope:	Extracellular Domain
Reactivity:	Human, Gibbon
Predicted Reactivity:	Monkey, Mouse
Purification:	Immunoaffinity purified
Presentation:	PBS, 0.1% sodium azide.
Recommended Storage:	Long term: -70°C; Short term: +4°C
Uses:	IHC - Paraffin (20 µg/ml), ICC (18 µg/ml) (Optimal dilution to be determined by the researcher)
Size:	50 µg
Concentration:	1 mg/ml

Immunohistochemistry Image:

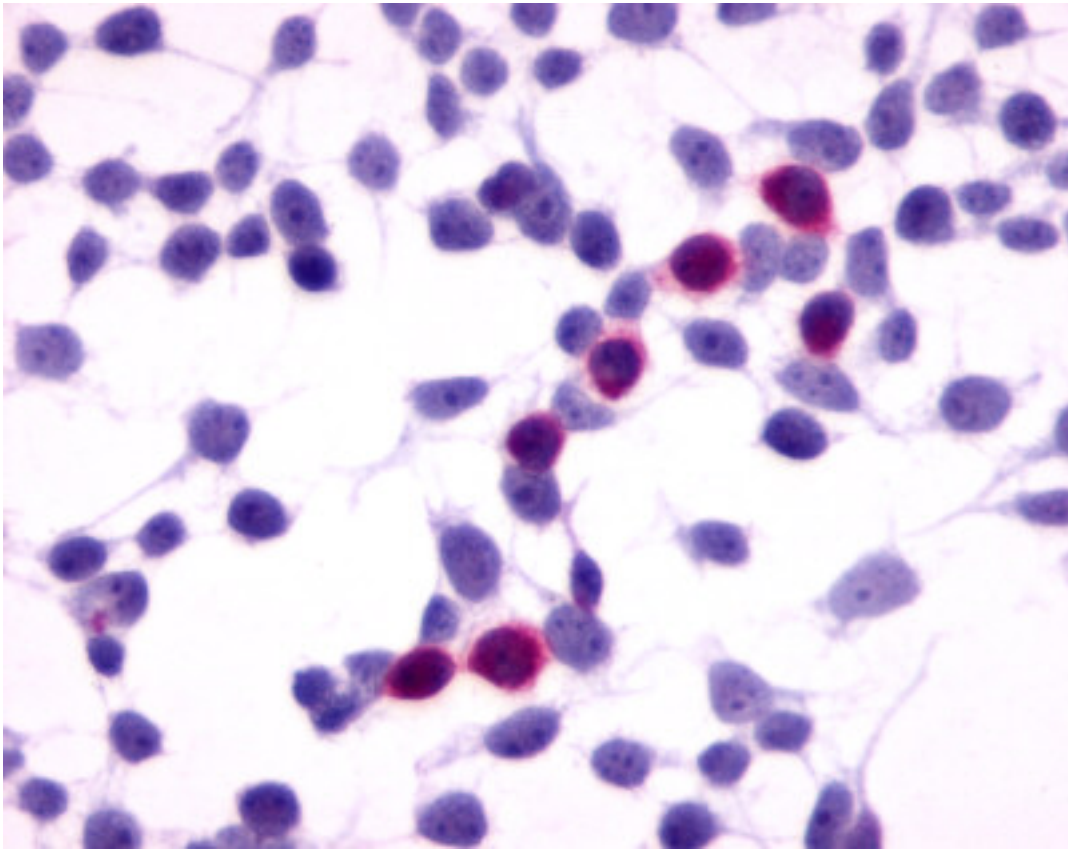


Anti-GPRC5A / RAI3 antibody IHC of human testis. Immunohistochemistry of formalin-fixed, paraffin-embedded tissue after heat-induced antigen retrieval. Antibody LS-A1220 dilution 18-36 ug/ml.

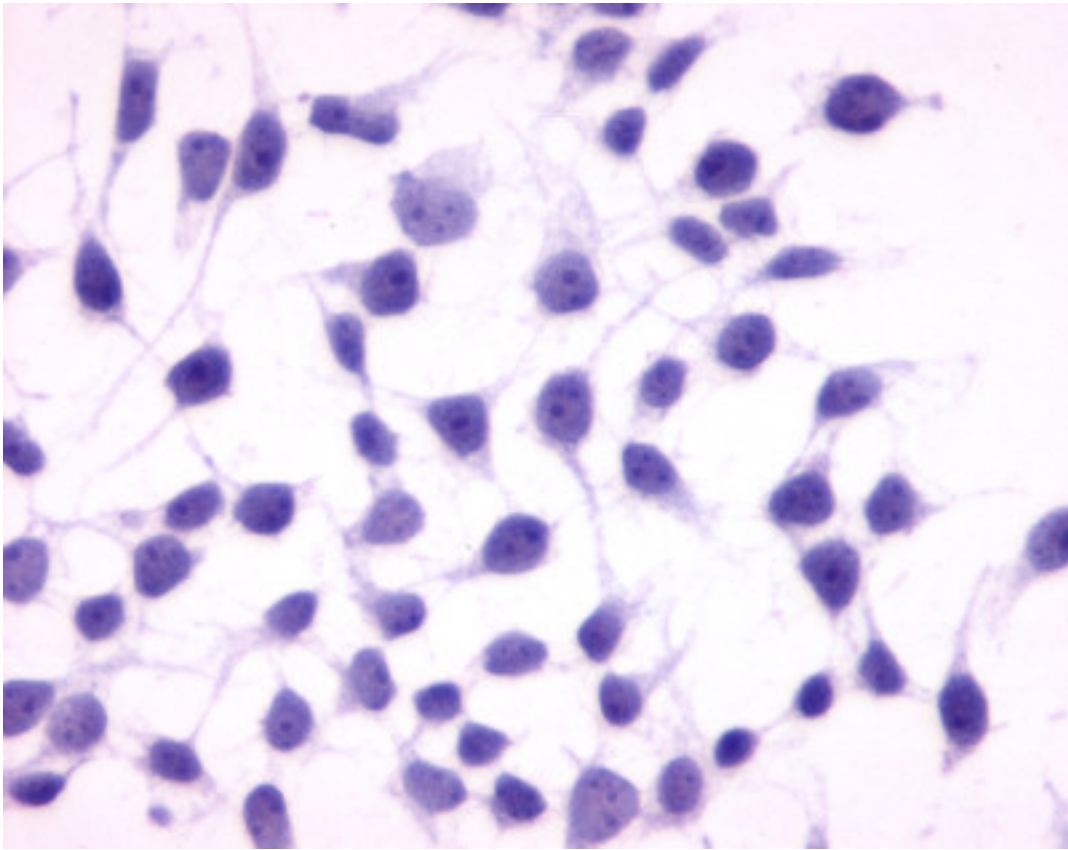
Immunohistochemistry Image:



Anti-GPRC5A / RAI3 antibody IHC of human prostate. Immunohistochemistry of formalin-fixed, paraffin-embedded tissue after heat-induced antigen retrieval. Antibody LS-A1220 dilution 18-36 ug/ml.



Cells expressing vector only - immunostained with target antibody



Cells expressing vector only - immunostained with target antibody

Requested From:

Japan

Laboratory Reagent For In Vitro Research Use Only

Not for resale without prior written consent from LifeSpan BioSciences, Inc.

Created on 9/23/2014

© 2014 LifeSpan BioSciences