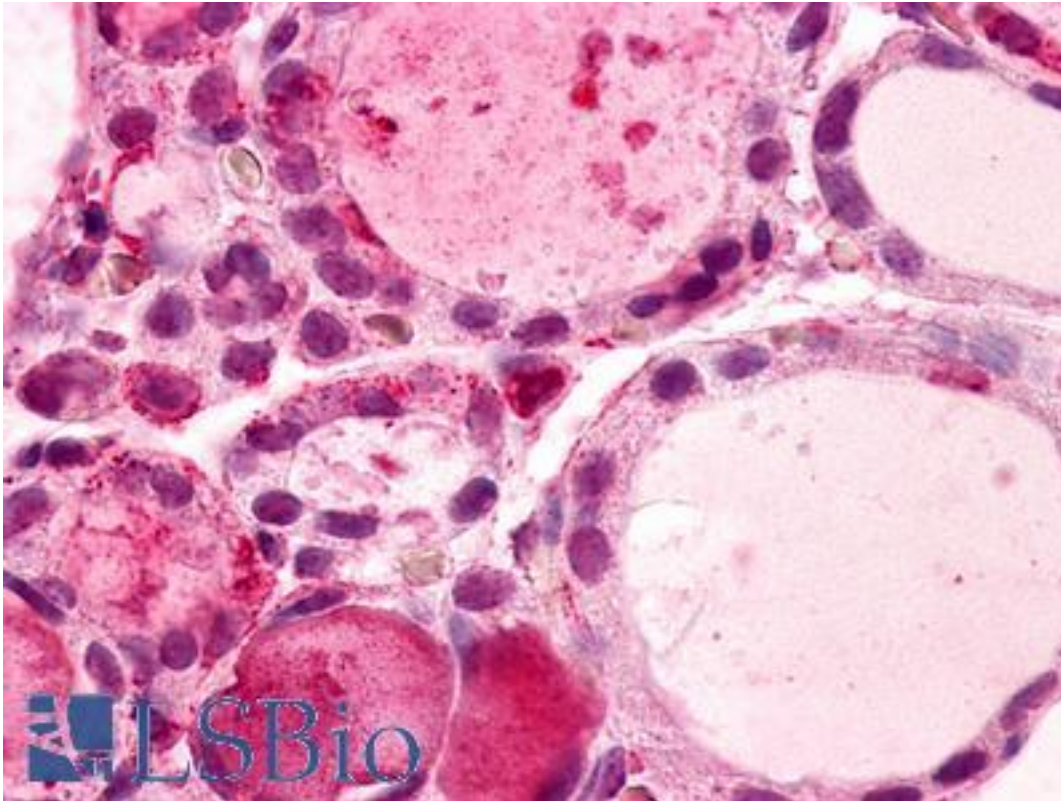


GPR56 Rabbit anti-Human Polyclonal (N-Terminus) Antibody - LS-A1214 - LSBio	
CatalogID:	LS-A1214
Target:	G protein-coupled receptor 56 (GPR56)
Synonyms:	GPR56 Antibody, BFPP Antibody, G-protein coupled receptor 56 Antibody, G protein-coupled receptor 56 Antibody, TM7LN4 Antibody, Protein TM7XN1 Antibody, TM7XN1 Antibody
Family / Subfamily:	GPCR / Orphan-B
Host	GPR56 antibody was produced in Rabbit
Clonality:	Polyclonal
Immunogen Species:	GPR56 antibody was raised against Human
Antigen Type:	Synthetic peptide
Immunogen:	GPR56 antibody was raised against synthetic 16 amino acid peptide from N-terminal extracellular domain of human GPR56. Percent identity with other species by BLAST analysis: Human (100%); Chimpanzee, Orangutan, Monkey (94%); Gorilla, Marmoset (88%); Elephant (81%).
Specificity:	Human GPR56. BLAST analysis of the peptide immunogen showed no homology with other human proteins.
Epitope:	N-Terminus
Reactivity:	Human
Predicted Reactivity:	Chimpanzee, Orangutan, Monkey
Purification:	Immunoaffinity purified
Presentation:	PBS, 0.1% sodium azide.
Recommended Storage:	Long term: -70°C; Short term: +4°C
Uses:	IHC - Paraffin (4 - 32 µg/ml) (Optimal dilution to be determined by the researcher)
Size:	50 µg
Concentration:	1 mg/ml

Immunohistochemistry Image:



Anti-GPR56 antibody IHC of human thyroid. Immunohistochemistry of formalin-fixed, paraffin-embedded tissue after heat-induced antigen retrieval. Antibody LS-A1214 dilution 4-32 ug/ml.

Requested From:

Japan

Laboratory Reagent For In Vitro Research Use Only

Not for resale without prior written consent from LifeSpan BioSciences, Inc.

Created on 9/23/2014

© 2014 LifeSpan BioSciences